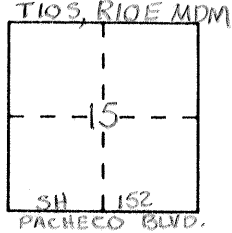


**CORNER RECORD**

Document Number 3650XX  
County of MERCED, California

City of LOS BANOS  
Brief Legal Description N.W. CORNER INTERSECTION OF CALIFORNIA & PACHECO  
(STATE HWY 152)



CORNER TYPE		COORDINATES (Optional)
Government Corner <input type="checkbox"/>	Control <input type="checkbox"/>	N. _____
Meander <input type="checkbox"/>	Property <input checked="" type="checkbox"/>	E. _____
Rancho <input type="checkbox"/>	Other <input type="checkbox"/>	Zone _____ Datum _____
Date of Survey _____		Elev. _____

Corner -- Left as found  Found and tagged  Established  Reestablished  Rebuilt

Identification and type of corner found: Evidence used to identify or procedure used to establish or reestablish the corner: Searched, found nothing. Original monument destroyed by road construction. Re-established from found reference points shown on CORNER RECORD 3650 XX, filed 2/25/94, MCR.

A description of the physical condition of the monument as found and as set or reset: Set 1" IP with yellow plastic plug "CALTRANS" (flush in A/C pavement)

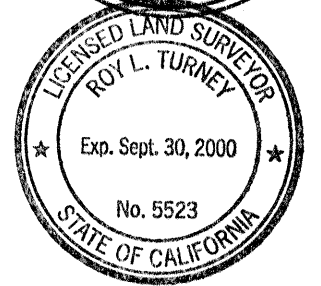
**SURVEYOR'S STATEMENT**

This Corner Record was prepared by me or under my direction in conformance with the Land Surveyors' Act on July 8th 1998.  
Signed Robin L. Wickline L.S. or R.C.E. Number 7026 Expires 6/30/02



**COUNTY SURVEYOR'S STATEMENT**

This Corner Record was received 7-20- 1998 and examined and filed 7-27 1998.  
Signed Roy L. Turney Title DEP. CO. SUR.

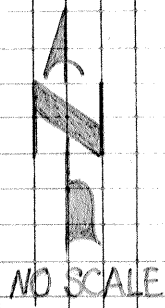
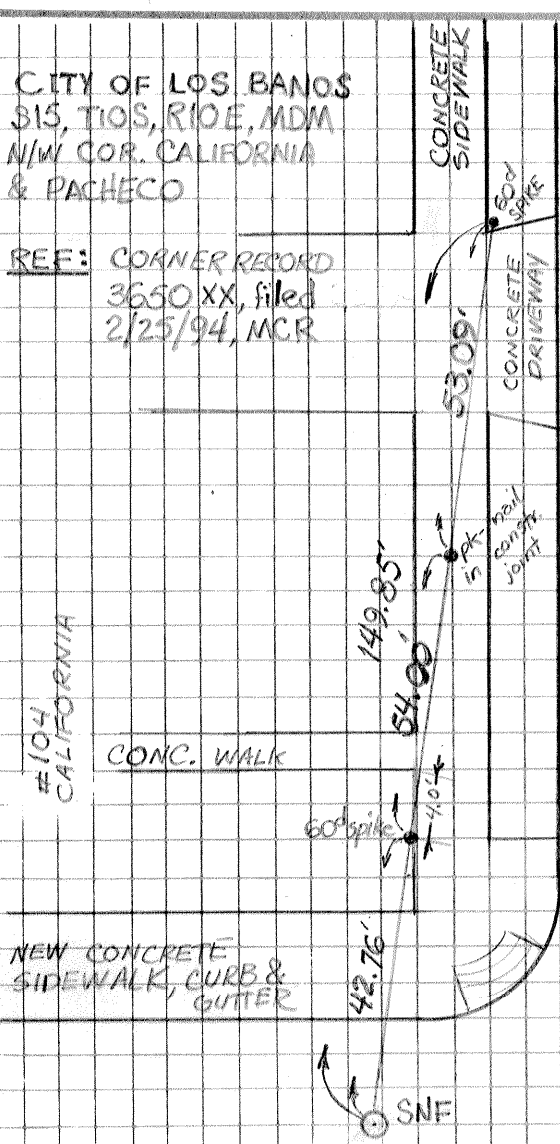


County Surveyor's Comment \_\_\_\_\_

SR 98 0219

CITY OF LOS BANOS  
 315, TIOS, RIOE, MDM  
 N/W COR. CALIFORNIA  
 & PACHECO

REF: CORNER RECORD  
 3650 XX, filed  
 2/25/94, MCR



NOTE: ALL DISTANCES SHOWN  
 ARE RECORD AND  
 MEASURED GROUND  
 DISTANCES IN FEET

LEGEND: SNF MEANS SEARCHED, NOTHING FOUND

- MEANS SET 1" IF WITH YELLOW PLASTIC PLUG "CALTRANS" (flush in A/C PAVEMENT)
- MEANS FOUND REFERENCE POINT PER CR 3650 XX MCR

GILROY

DOS PALOS

STATE ROUTE 152  
 PACHECO BLVD.