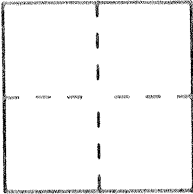


CORNER RECORD

Document Number 3650 VV.
County of MERCED, California

City of LOS BANOS
Brief Legal Description LOT CORNER
in Section 15, T10S, R10E, MDM



CORNER TYPE

Government Corner Control
Meander Property
Rancho Other
Date of Survey 3-22/93

COORDINATES

(Optional)
N. 203008.6
E. 1896179.1
Zone 3 Datum 27
Elev. _____

Corner -- Left as found Found and tagged Established Reestablished Rebuilt

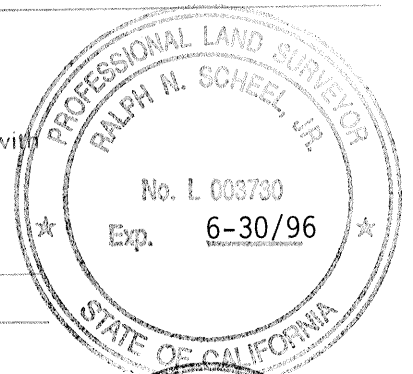
Identification and type of corner found: Evidence used to identify or procedure used to establish or reestablish the corner: 3/4" iron pipe, no tag, at the SE corner of SALHA ADDN., 12-OP-14,
Merced County Records.

A description of the physical condition of the monument as found and as set or reset: Monument found in good
condition 132' more or less east of the NE corner of the intersection of Arizona
Ave. and Pacheco Blvd. Will be destroyed by construction.

SURVEYOR'S STATEMENT

This Corner Record was prepared by me or under my direction in conformance with
the Land Surveyors' Act on March 22 19 93.

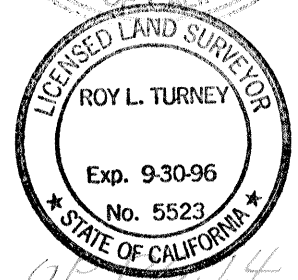
Signed Ralph Scheel L.S. or ~~XXXXX~~ Number 3730
Party Chief, Caltrans License Expiration Date _____



COUNTY SURVEYOR'S STATEMENT

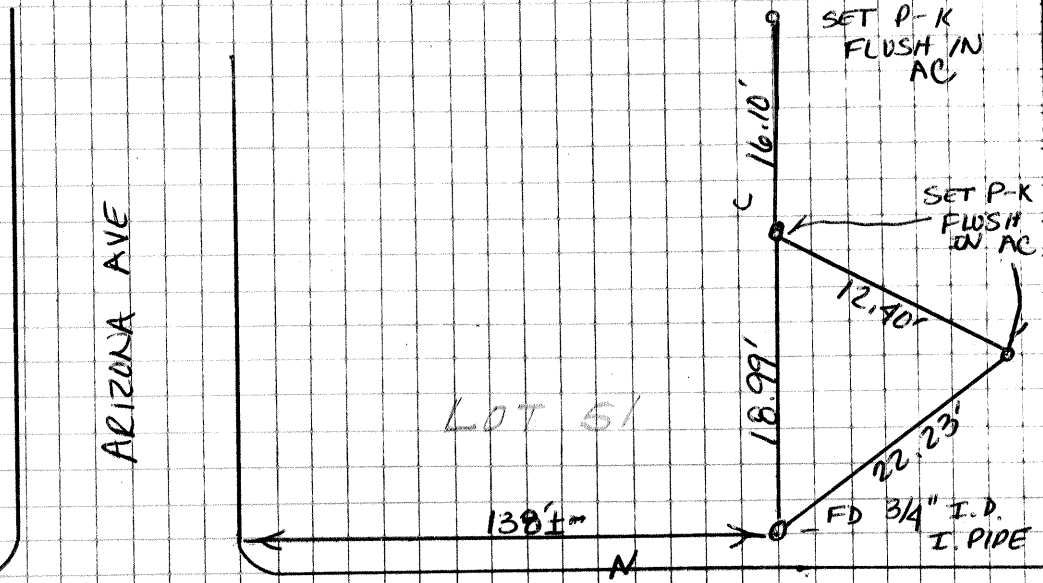
This Corner Record was received 2-23- 1994 and examined
and filed 2-25- 1994.

Signed Roy L. Turney Title DEP. CO. SUR.



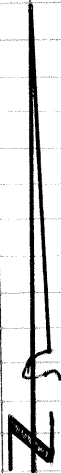
County Surveyor's Comment S.E. COR. Lot 51 Vol. 12 OF 14

SECT 15 TIOS RIDE MDM



PACHECO BLVD.

RTE 152



The lines shown hereon are for the purpose of
re-permanentizing the monumentation currently existing.
No attempt was made to determine the validity of
the monuments or their proper location in relation to
legal boundary lines in the area.