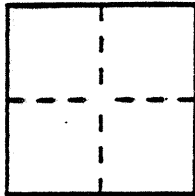


CORNER RECORD

Document Number 3650-V.V

City of Los Banos County of Merced, California

Brief Legal Description Lot corner on north side of Pacheco Blvd (State Hwy 152) approx 162 FT east of Arizona Ave centerline in SEC 15 T10S R10E MDM



CORNER TYPE

Government Corner Control
 Meander Property
 Rancho Other
 Date of Survey 3-8-96

COORDINATES (Optional)

N. 203,008.6
 E. 1,896,179.1
 Zone 3 Datum 27
 Elev. _____

Corner — Left as found Found and tagged Established Reestablished Rebuilt

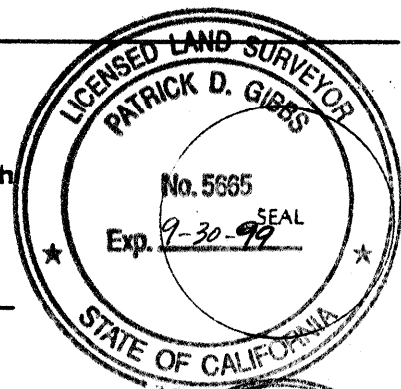
Identification and type of corner found: Evidence used to identify or procedure used to establish or reestablish the corner:
Found 3/4" Iron pipe, see 12/09/14 Merced County Records.

A description of the physical condition of the monument as found and as set or reset: Good

SURVEYOR'S STATEMENT

This Corner Record was prepared by me or under my direction in conformance with the Land Surveyors' Act on 3-12- 1996.

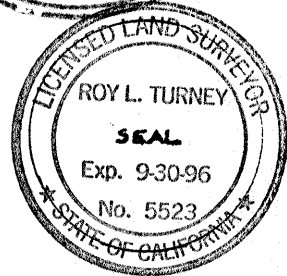
Signed Patrick D. Gibbs L.S. or R.E.E. Number LS 5665



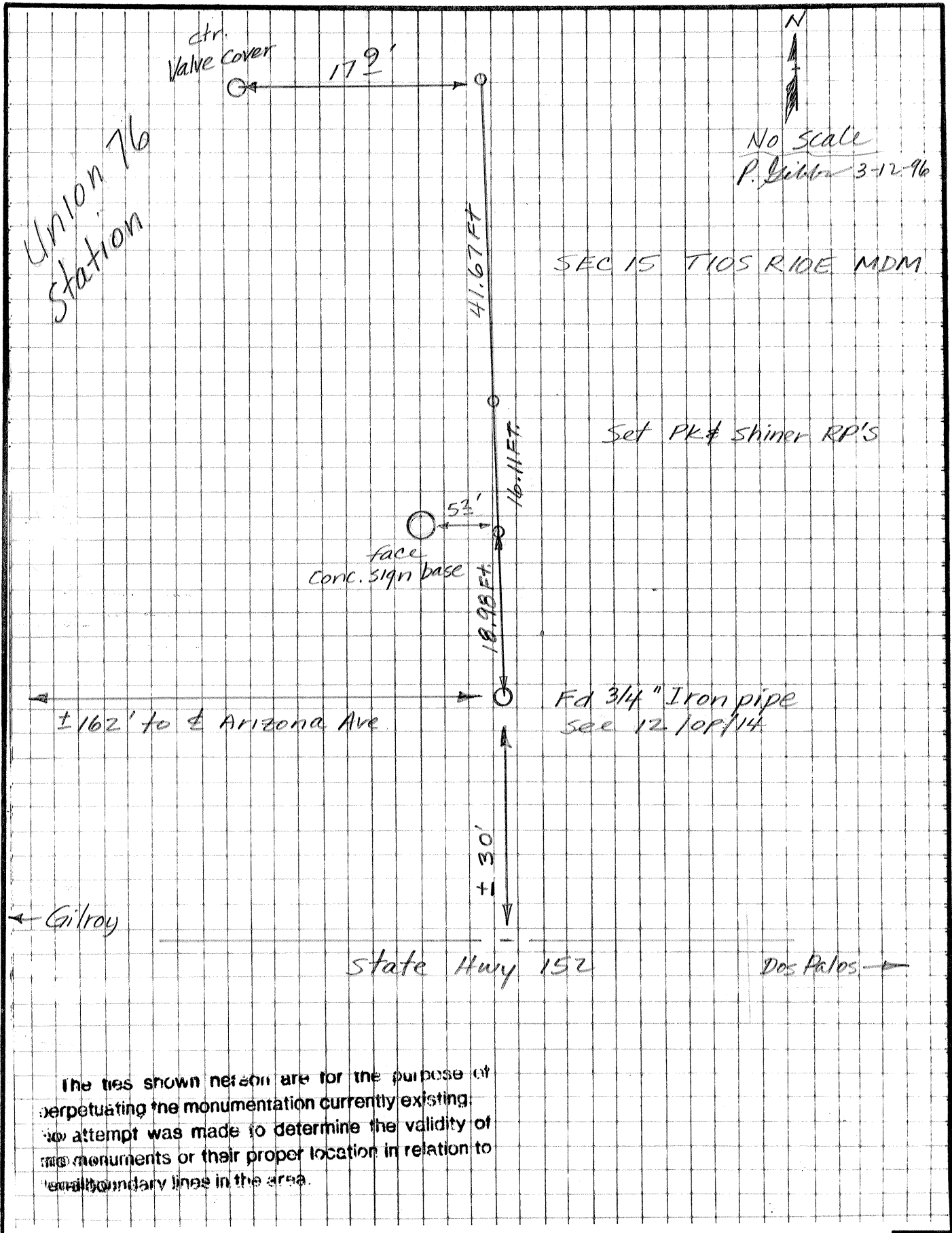
COUNTY SURVEYOR'S STATEMENT

This Corner Record was received MAY 1996 and examined and filed MAY 22 1996.

Signed Roy L. Turney Title DEP CO SUR



County Surveyor's Comment _____



The ties shown herein are for the purpose of perpetuating the monumentation currently existing. No attempt was made to determine the validity of the monuments or their proper location in relation to legal boundary lines in the area.