

CORNER RECORD

COUNTY OF Merced T. 10 S R. 10 E M.D.B. & MERIDIAN CALIFORNIA

CORNER TYPE: GOV'T. CORNER MEANDER RANCHO CONTROL OTHER

CORNER IDENTIFICATION — DATE OF VISIT March 8, 1989

15

Lots 6, 7, 8 and 9 of "Map of Coronado Terrace Subdivision", recorded in Book 16 of Official Plats at Page 2, Merced County Records.

CORNER — LEFT AS FOUND FOUND AND TAGGED REESTABLISHED OBLITERATED CORNER REBUILT

PHYSICAL DESCRIPTION OF CORNER FOUND; EVIDENCE AND METHOD USED TO IDENTIFY OR REESTABLISH

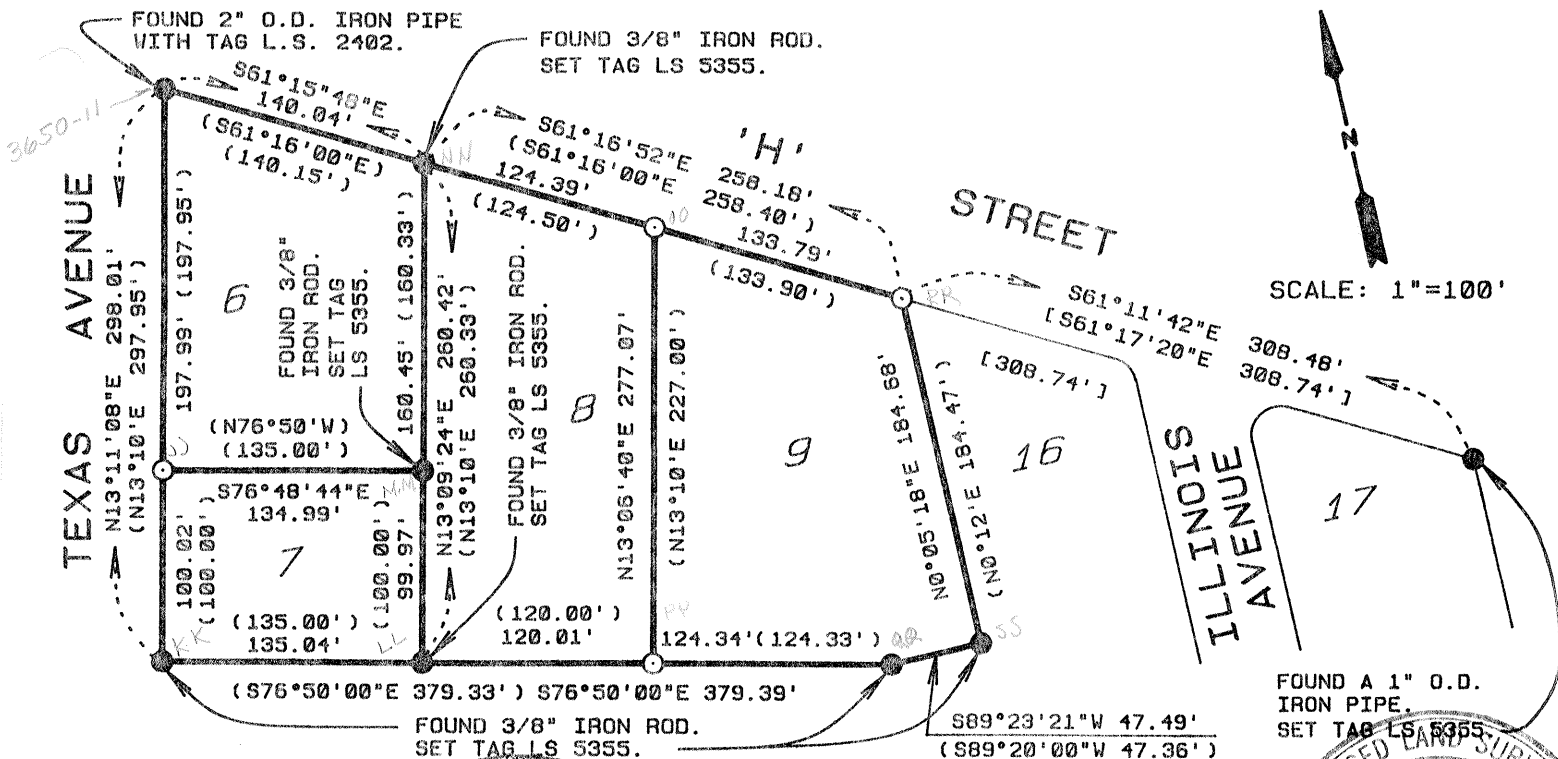
PHYSICAL DESCRIPTION OF MONUMENTS REBUILT OR PERPETUATED

o = Set a 1" O.D. X 28" galvanized iron pipe with plastic plug marked L.S. 5355.

() = Record per "Map of Coronado Terrace Subdivision", recorded in Book 16 of Official Plats at Page 2, Merced County Records.

[] = Record per "Map of Bryant Manor", recorded in Book 16 of Official Plats at Page 11, Merced County Records.

SKETCH: (Include reference tie or witness points, remarks and topo of area)



SCALE: 1"=100'



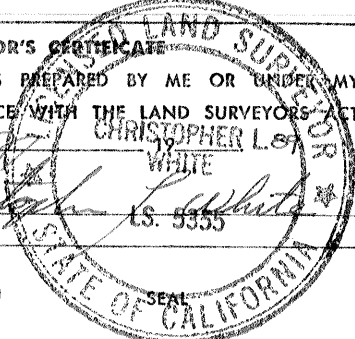
SURVEYOR'S CERTIFICATE

THIS CORNER RECORD WAS PREPARED BY ME OR UNDER MY DIRECTION IN CONFORMANCE WITH THE LAND SURVEYORS' ACT

SIGNED: Christopher L. White L.S. 5355

L.S. or R.C.E. No.: 5355

Exp. 12-31-91



COUNTY SURVEYOR'S CERTIFICATE

THE CORNER RECORD WAS RECEIVED 4-4-89 1989

AND EXAMINED AND FILED 4-4 1989

BY: Paul Turney Exp. Sept. 30, 1992

TITLE: Dep. Co.

DOCUMENT No. 3650-11 TO 55

STATEMENT ON BACK OF SHEET

ok Paul

YES NO

