

CORNER RECORD

COUNTY OF Merced T. 10 S R. 10 E M.D.B. & MERIDIAN CALIFORNIA

CORNER TYPE: GOV'T. CORNER MEANDER RANCHO CONTROL OTHER

CORNER IDENTIFICATION — DATE OF VISIT March 8, 1989

15

Lots 6, 7, 8 and 9 of "Map of Coronado Terrace Subdivision", recorded in Book 16 of Official Plats at Page 2, Merced County Records.

CORNER — LEFT AS FOUND FOUND AND TAGGED REESTABLISHED OBLITERATED CORNER REBUILT

PHYSICAL DESCRIPTION OF CORNER FOUND; EVIDENCE AND METHOD USED TO IDENTIFY OR REESTABLISH

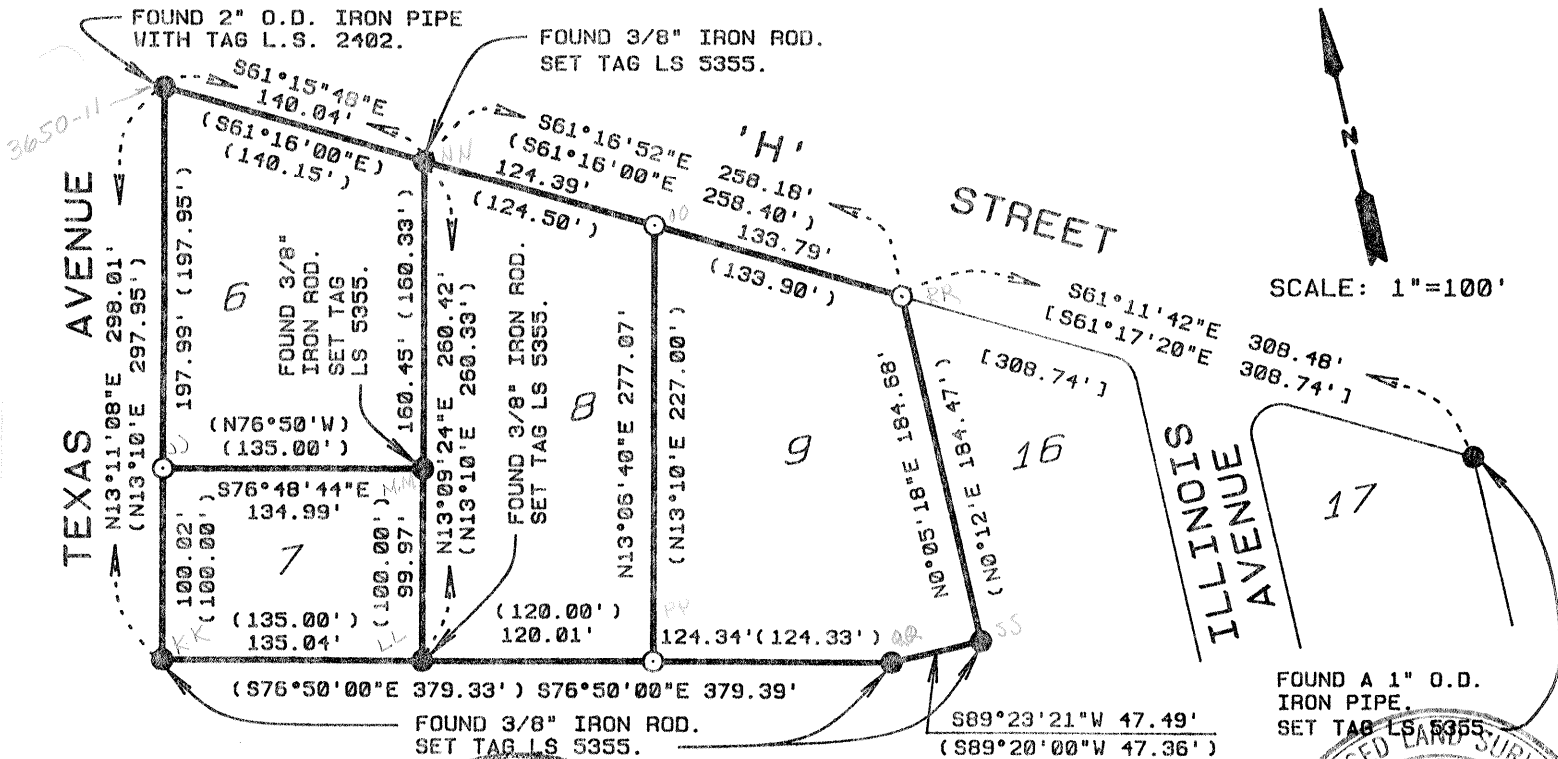
PHYSICAL DESCRIPTION OF MONUMENTS REBUILT OR PERPETUATED

o = Set a 1" O.D. X 28" galvanized iron pipe with plastic plug marked L.S. 5355.

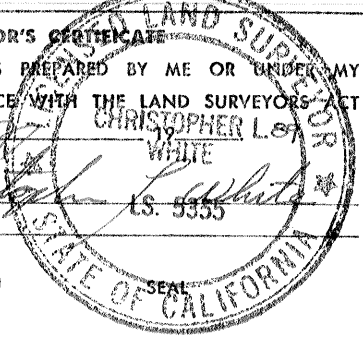
() = Record per "Map of Coronado Terrace Subdivision", recorded in Book 16 of Official Plats at Page 2, Merced County Records.

[] = Record per "Map of Bryant Manor", recorded in Book 16 of Official Plats at Page 11, Merced County Records.

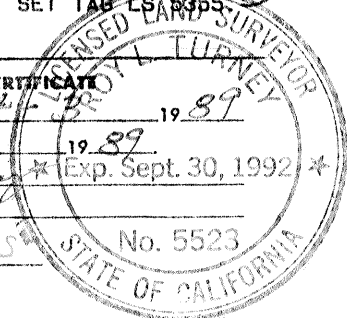
SKETCH: (Include reference tie or witness points, remarks and topo of area)



SURVEYOR'S CERTIFICATE
 THIS CORNER RECORD WAS PREPARED BY ME OR UNDER MY DIRECTION IN CONFORMANCE WITH THE LAND SURVEYORS' ACT
 MARCH 30 1989
 SIGNED: Christopher L. White
 L.S. or R.C.E. No.: 5355



COUNTY SURVEYOR'S CERTIFICATE
 THE CORNER RECORD WAS RECEIVED 4-4 1989
 AND EXAMINED AND FILED 4-4 1989
 BY: Paul Turney Exp. Sept. 30, 1992
 TITLE: Dep. Co.
 DOCUMENT No. 3650-11 TO 55



Exp. 12-31-91

STATEMENT ON BACK OF SHEET
 YES NO