

# CORNER RECORD

COUNTY OF Merced T. 10 S R. 10 E M.D.B. & MERIDIAN CALIFORNIA

CORNER TYPE: GOV'T. CORNER  MEANDER  RANCHO  CONTROL  OTHER

CORNER IDENTIFICATION — DATE OF VISIT March 8, 1989

15

Lots 6, 7, 8 and 9 of "Map of Coronado Terrace Subdivision", recorded in Book 16 of Official Plats at Page 2, Merced County Records.

CORNER — LEFT AS FOUND  FOUND AND TAGGED  REESTABLISHED OBLITERATED CORNER  REBUILT

PHYSICAL DESCRIPTION OF CORNER FOUND; EVIDENCE AND METHOD USED TO IDENTIFY OR REESTABLISH

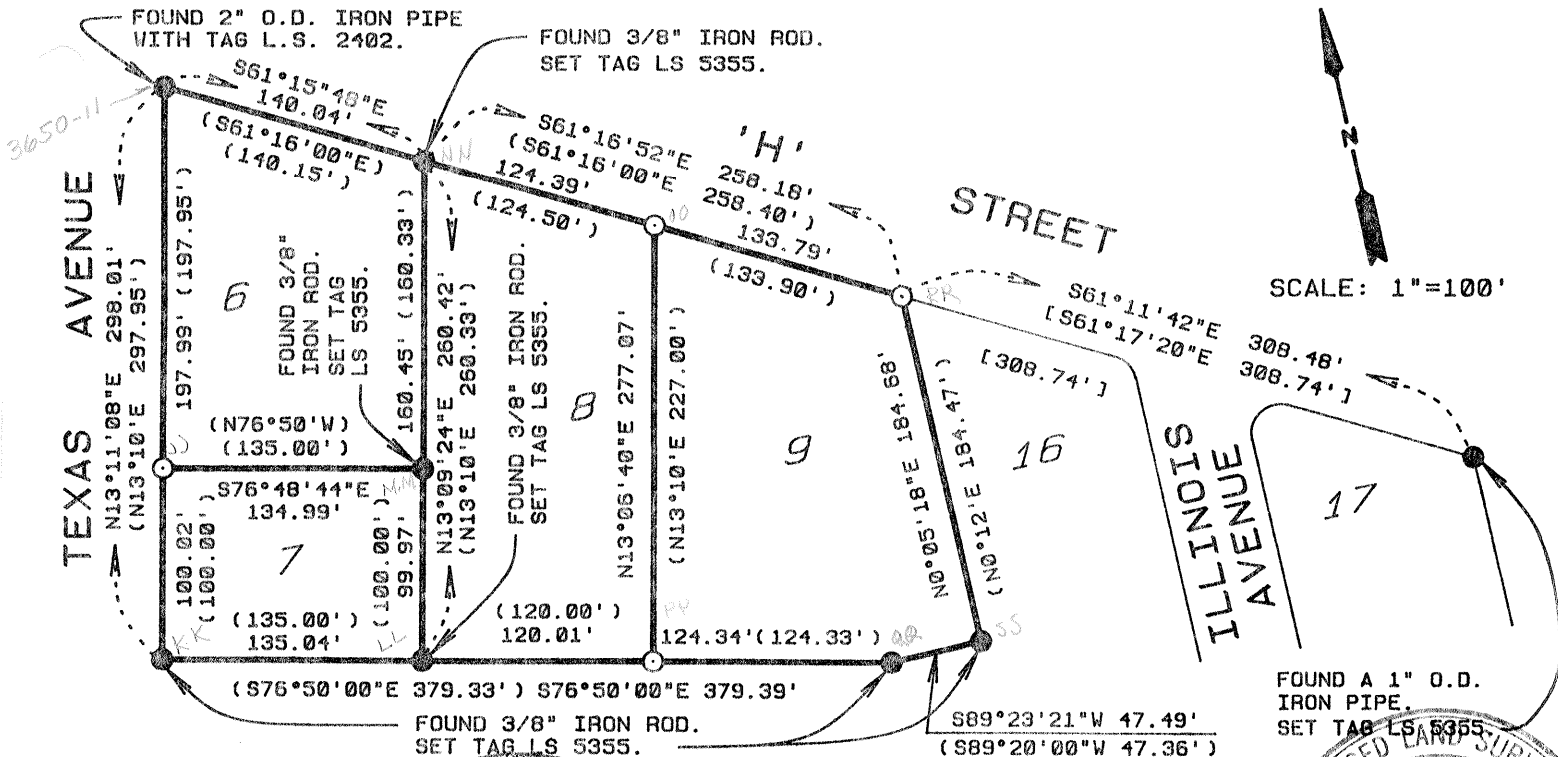
**PHYSICAL DESCRIPTION OF MONUMENTS REBUILT OR PERPETUATED**

o = Set a 1" O.D. X 28" galvanized iron pipe with plastic plug marked L.S. 5355.

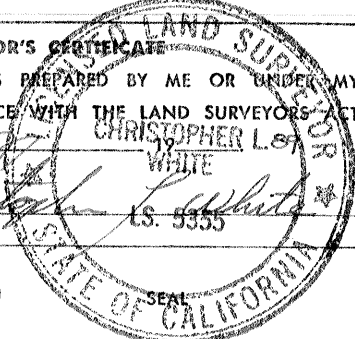
() = Record per "Map of Coronado Terrace Subdivision", recorded in Book 16 of Official Plats at Page 2, Merced County Records.

[ ] = Record per "Map of Bryant Manor", recorded in Book 16 of Official Plats at Page 11, Merced County Records.

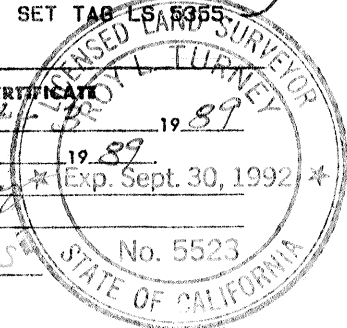
**SKETCH: (Include reference tie or witness points, remarks and topo of area)**



**SURVEYOR'S CERTIFICATE**  
 THIS CORNER RECORD WAS PREPARED BY ME OR UNDER MY DIRECTION IN CONFORMANCE WITH THE LAND SURVEYORS' ACT  
 MARCH 30 1989  
 SIGNED: Christopher L. White  
 L.S. or R.C.E. No.: 5355



**COUNTY SURVEYOR'S CERTIFICATE**  
 THE CORNER RECORD WAS RECEIVED 4-4-89 1989  
 AND EXAMINED AND FILED 4-4-89 1989  
 BY: Paul Turney Exp. Sept. 30, 1992  
 TITLE: Dep. Co.  
 DOCUMENT No. 3650-11 TO 55



Exp. 12-31-91

STATEMENT ON BACK OF SHEET  
 YES  NO