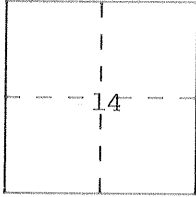


CORNER RECORD

Document Number 3650-I-I-I

City of Los Banos County of Merced, California

Brief Legal Description Lot 8 of Block 7, as shown on Official Plat Vol. 11, Pg 48, MCR, within Section 14, T 10 S, R 10 E, MDB&M.



CORNER TYPE

COORDINATES (Optional)

Government Corner Control
Meander Property
Rancho Other
Date of Survey 06-04-96

N. _____
E. _____
Zone _____ Datum _____
Elev. _____

Corner — Left as found Found and tagged Established Reestablished Rebuilt

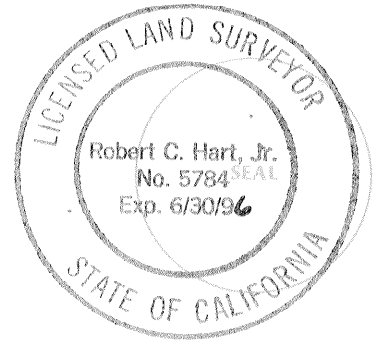
Identification and type of corner found: Evidence used to identify or procedure used to establish or reestablish the corner:
See sketch on reverse.

A description of the physical condition of the monument as found and as set or reset: _____
Set 1" O.D. x 28" galvanized iron pipe with plastic plug stamped P.L.S.5784, down 0.5'
See sketch on reverse.

SURVEYOR'S STATEMENT

This Corner Record was prepared by me or under my direction in conformance with the Land Surveyors' Act on June 13, 1996.

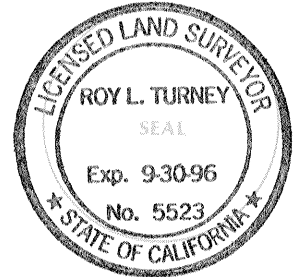
Signed Robert C. Hart, Jr. L.S. or ~~REG.~~ E. Number 5784

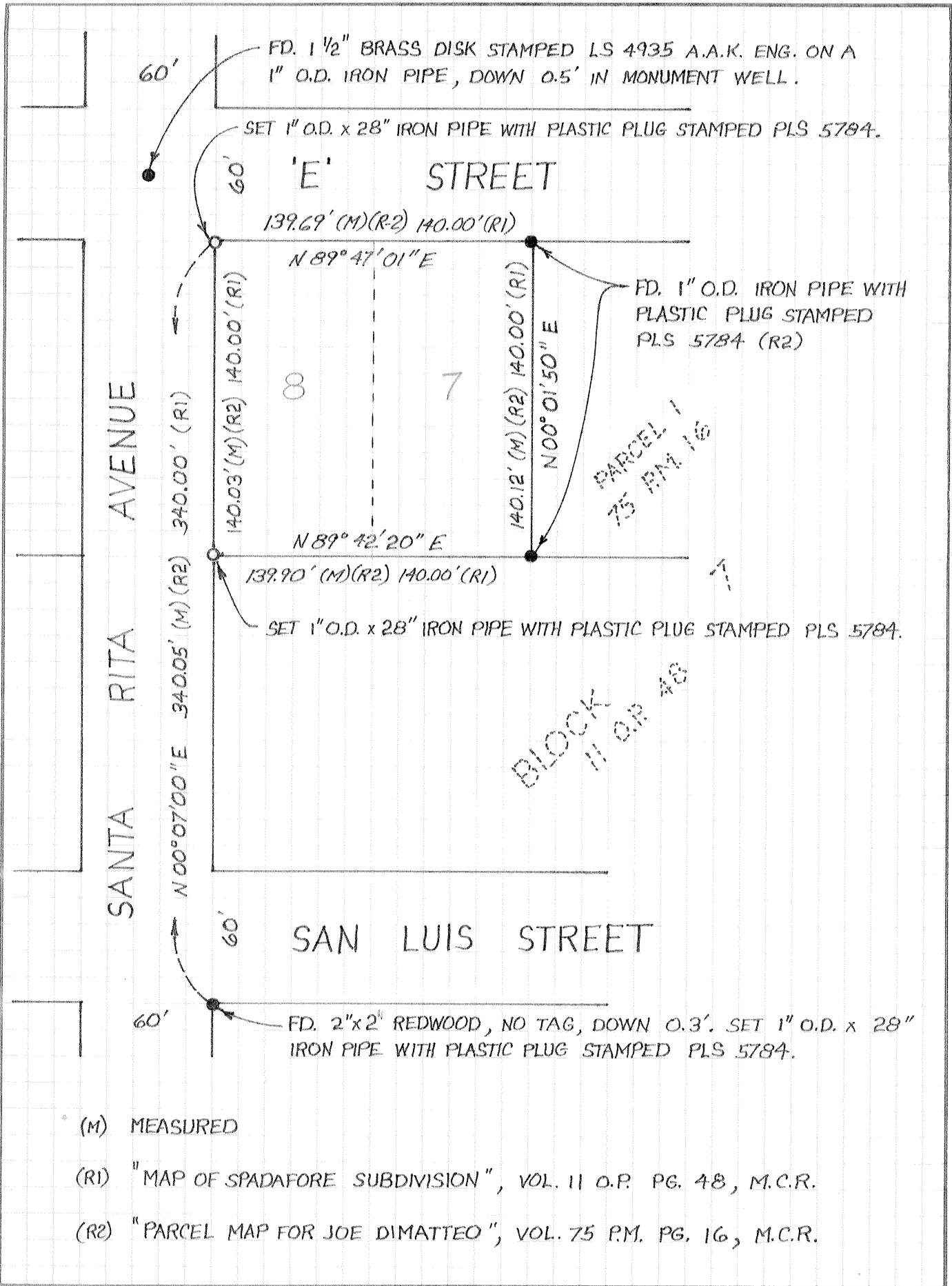


COUNTY SURVEYOR'S STATEMENT

This Corner Record was received 6-17 1996 and examined and filed JUNE 17, 1996.

Signed Roy L. Turney Title DEP. CO. SUR.
County Surveyor's Comment _____





(M) MEASURED

(R1) "MAP OF SPADAFORE SUBDIVISION", VOL. 11 O.P. PG. 48, M.C.R.

(R2) "PARCEL MAP FOR JOE DIMATTEO", VOL. 75 P.M. PG. 16, M.C.R.