

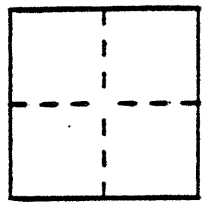
CORNER RECORD

Document Number 3650-H-H-H

City of Los Banos

County of Merced, California

Brief Legal Description Lot corner on north side of Pacheco Blvd (State Hwy 152) approx. 30 FT west of Arizona Ave. center line, in SEC 15 T10S R10E MDM.



CORNER TYPE

- Government Corner
- Meander
- Rancho
- Date of Survey 3-8-96
- Control
- Property
- Other

COORDINATES (Optional)

N. 203,009.4
 E. 1895.986.7
 Zone 3 Datum 27
 Elev. _____

Corner — Left as found Found and tagged Established Reestablished Rebuilt

Identification and type of corner found: Evidence used to identify or procedure used to establish or reestablish the corner:

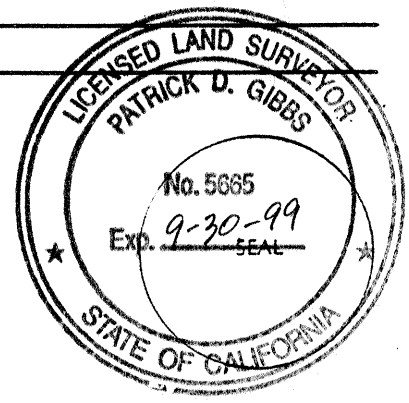
Found 1/2" rebar w/plastic cap (LS 4156). See 12/09/14 Merced County Records.

A description of the physical condition of the monument as found and as set or reset: Good

SURVEYOR'S STATEMENT

This Corner Record was prepared by me or under my direction in conformance with the Land Surveyors' Act on 3-12- 19 96.

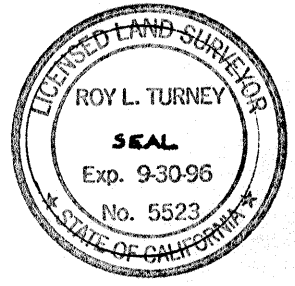
Signed Patrick D. Gibbs L.S. or R.C.E. Number LS 5665



COUNTY SURVEYOR'S STATEMENT

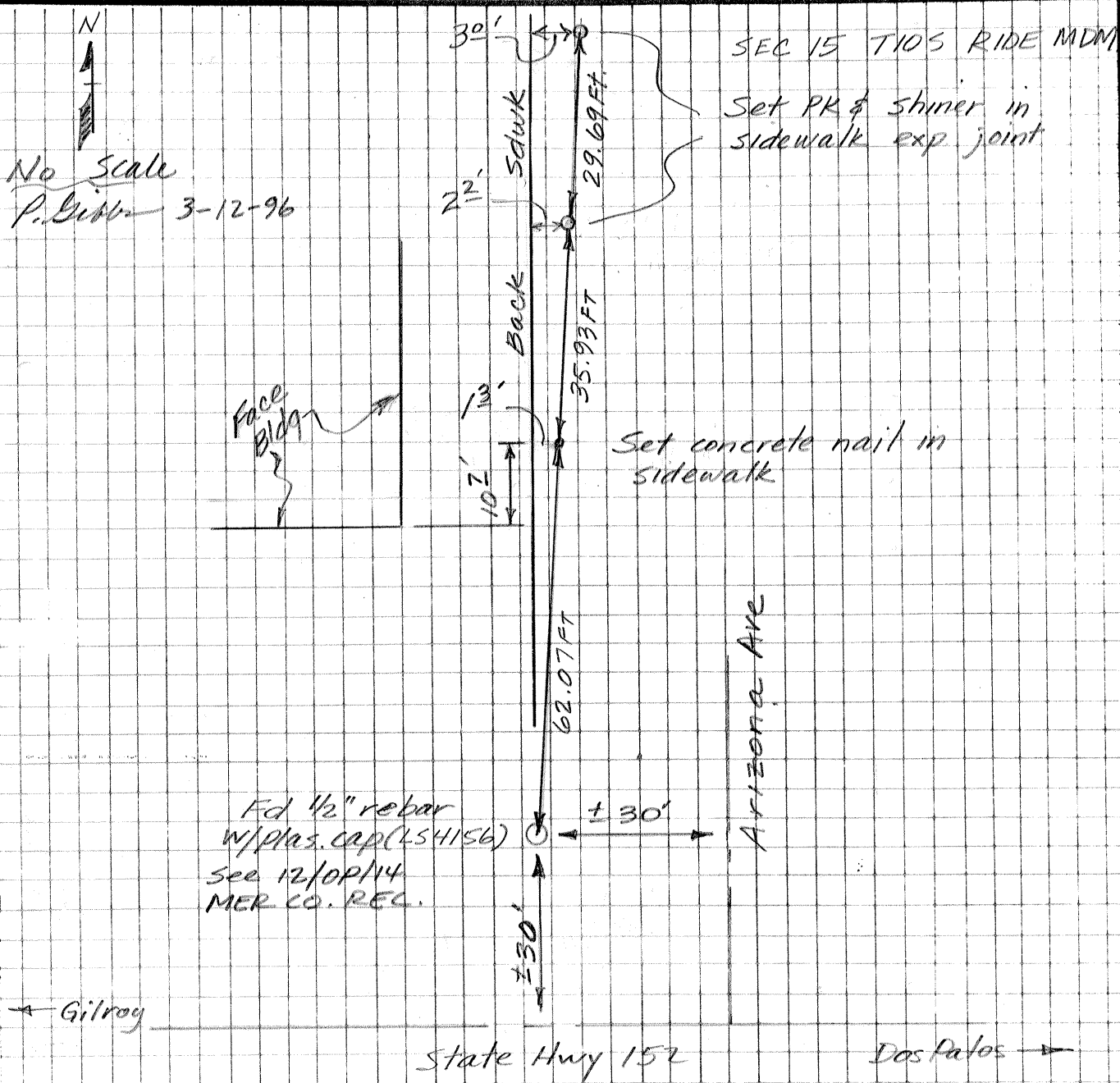
This Corner Record was received MAY 19 96 and examined and filed MAY 22, 19 96.

Signed Ray L. Turney Title DEP CO. SUR



County Surveyor's Comment _____

No Scale
P. Gibb 3-12-96



The ties shown hereon are for the purpose of perpetuating the monumentation currently existing. No attempt was made to determine the validity of the monuments or their proper location in relation to legal boundary lines in the area.