

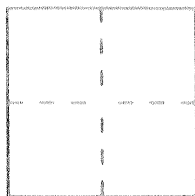
CORNER RECORD

Document Number 3650 DDD

City of LOS BANOS

County of MERCED, California

Brief Legal Description N.E. COR. OF INTERSECTION OF NEVADA & PACHECO IN SECT. 15 T10S R10E MDM



CORNER TYPE

Government Corner Control
Meander Property
Rancho Other
Date of Survey 3-12-93

COORDINATES

(Optional)

N. 203007.9
E. 1896371.4
Zone 3 Datum 27
Elev. _____

Corner — Left as found Found and tagged Established Reestablished Rebuilt

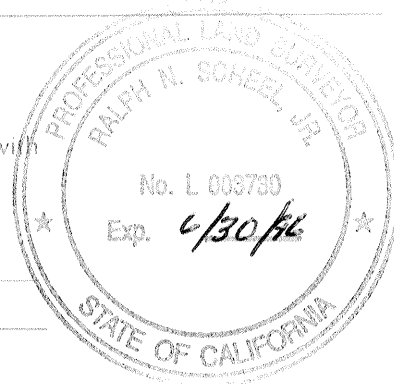
Identification and type of corner found: Evidence used to identify or procedure used to establish or reestablish the corner: FOUND CHISEL + PER 34 PM 37 MERCED Co. RECORDS

A description of the physical condition of the monument as found and as set or reset: MONUMENT IS IN GOOD CONDITION - WILL BE DESTROYED BY CONSTRUCTION.

SURVEYOR'S STATEMENT

This Corner Record was prepared by me or under my direction in conformance with the Land Surveyors Act on 7-12- 1993.

Signed Ralph Scheel L.S. No. 3730
PARTY CHIEF, CALTRANS License Expiration Date _____

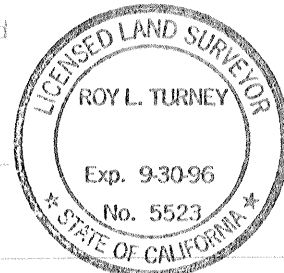


COUNTY SURVEYOR'S STATEMENT

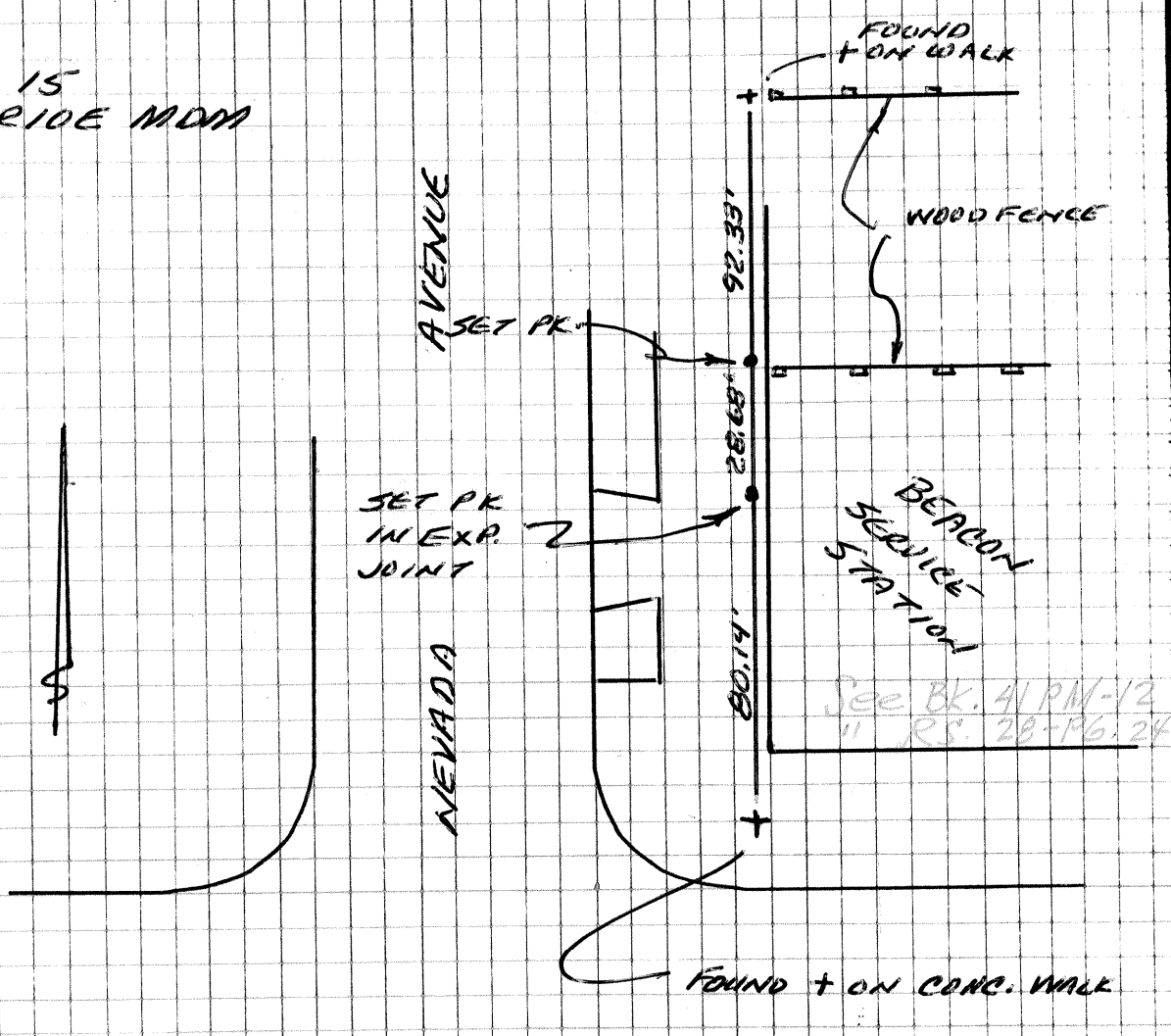
This Corner Record was received 2-23 1994 and examined and filed 2-25 1995.

Signed Roy Turney Title DEP. CO. SUR

County Surveyor's Comment See R.S. Vol. 28 PG. 24



SECT. 15
TIOS RIDE MDM



PACHECO BLVD.

ST. RT. 152

The ties shown hereon are for the purpose of perpetuating the monumentation currently existing. No attempt was made to determine the validity of the monuments or their proper location in relation to legal boundary lines in the area.