

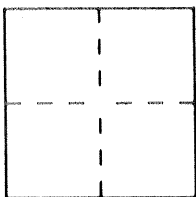
CORNER RECORD

Document Number 3650 CCC.

City of LOS BANOS

County of MERCED, California

Brief Legal Description SW COR LOT 28



SECT 15
TIOS RIDE
MDM

CORNER TYPE

- Government Corner
- Control
- Meander
- Property
- Rancho
- Other
- Date of Survey 3-12-93

COORDINATES
(Optional)

N. 203006.5
 E. 1896877.2
 Zone 3 Datum 27'
 Elev. _____

Corner — Left as found Found and tagged Established Reestablished Rebuilt

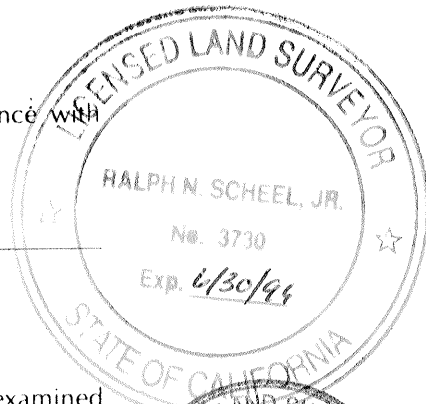
Identification and type of corner found: Evidence used to identify or procedure used to establish or reestablish the corner: 3/4" I. PIPE AT S.W. CORNER OF LOT 28 OF THE
RESUBDIVISION OF LOT 14 SEE 30 PM 48
MER. Co RECORDS

A description of the physical condition of the monument as found and as set or reset: APPEARS
TO BE IN GOOD CONDITION BUT WAS CALLED DISTURBED
ON CALTRANS MAP 10 MER 152 PM 19.6/21.3 SH 3 OF 6

SURVEYOR'S STATEMENT

This Corner Record was prepared by me or under my direction in conformance with the Land Surveyors' Act on 3-12 1993

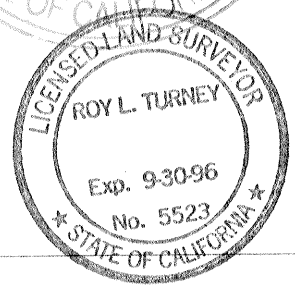
Signed Ralph Scheel L.S. or R.C.E. Number 3730
PARTY CHIEF, CALTRANS



COUNTY SURVEYOR'S STATEMENT

This Corner Record was received 2-23 1994 and examined and filed 2-25 1994

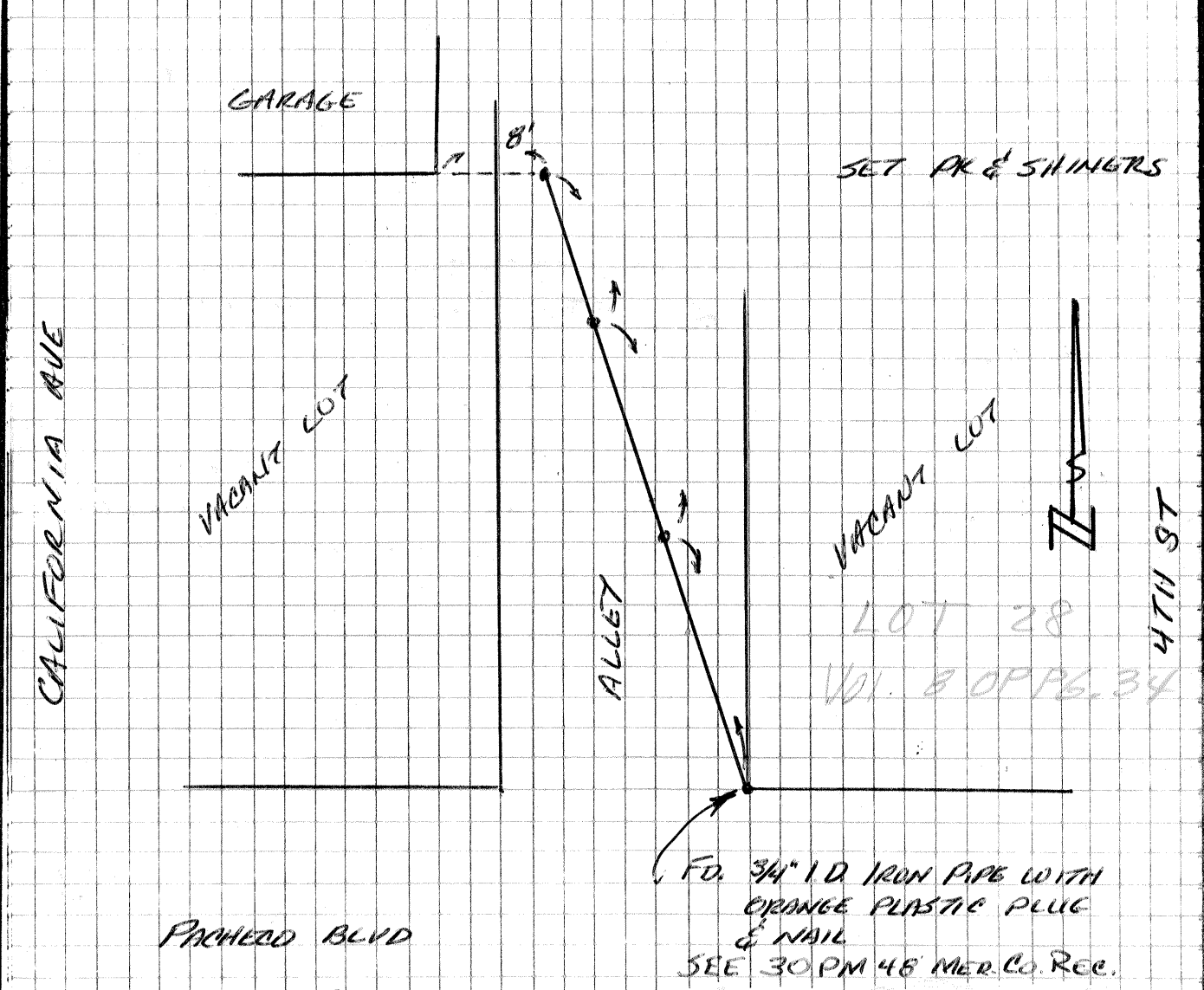
Signed Roy L. Turney Title DEP. CO. SUR.



County Surveyor's Comment _____

(CARLOS ALLEY) ADD ON MAP

SECT 15
T10SR106 MDM



PACHECO BLVD
ST. RT. 152

FO. 3/4" I.D. IRON PIPE WITH
ORANGE PLASTIC PLUG
& NAIL
SEE 30 PM 48 MER. CO. REC.

The ties shown hereon are for the purpose of perpetuating the monumentation currently existing. No attempt was made to determine the validity of the monuments or their proper location in relation to legal boundary lines in the area.