

CORNER RECORD

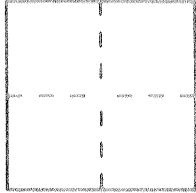
Document Number 3650 BBB

City of Los Banos

County of Merced, California

Brief Legal Description Lot Cor.

Section 15, T10S R10E MDM



CORNER TYPE

Government Corner Control
Meander Property
Rancho Other
Date of Survey 3-15-93

COORDINATES
(Optional)

N 203009.8
E 1895847.0
Zone 3 Datum 27
Elev. _____

Corner - Left as found Found and tagged Established Reestablished Rebuilt

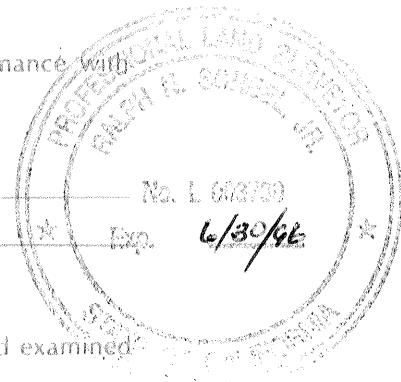
Identification and type of corner found: Evidence used to identify or procedure used to establish or reestablish the corner: 1/2" rebar with cap stamped L.S. 4156

A description of the physical condition of the monument as found and as set or reset: Monument down 0.1 in A.C. Will be destroyed by construction.

SURVEYOR'S STATEMENT

This Corner Record was prepared by me or under my direction in conformance with the Land Surveyors' Act on 3-15 19 93

Signed Ralph Schuel L.S. or XXXX Number 3730
PARTY CHIEF, CALTRANS License Expiration Date _____

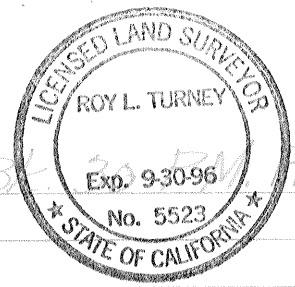


COUNTY SURVEYOR'S STATEMENT

This Corner Record was received 2-23- 1994 and examined _____ and filed 2-25- 1994.

Signed Roy Turney Title Dep. Co. Sur.

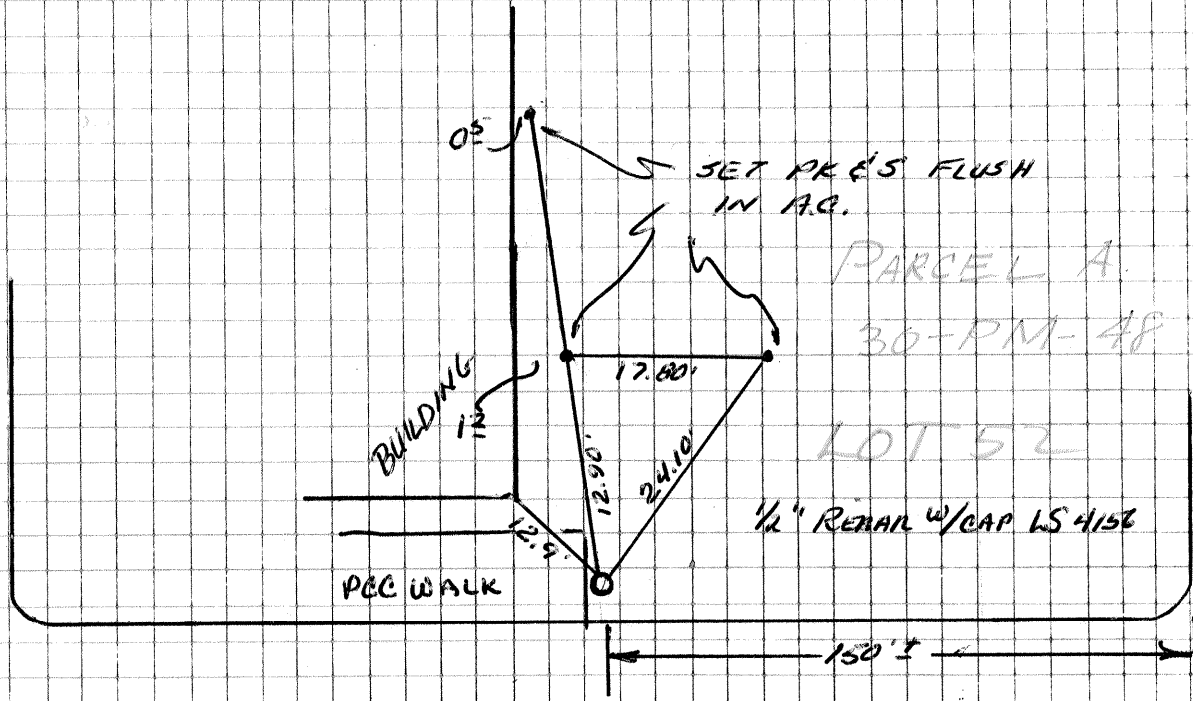
County Surveyor's Comment S.W. COR Parcel "A" B...



SECT 15 TIOSRIDE MDM

ILLINOIS

ARIZONA



PACHECO BLVD
ST. RT. 152



The ties shown hereon are for the purpose of perpetuating the monumentation currently existing. No attempt was made to determine the validity of the monuments or their proper location in relation to legal boundary lines in the area.