

**CORNER RECORD**

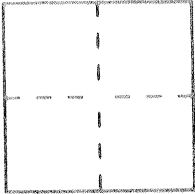
Document Number 3650 AAA

City of LOS BANOS

County of MERCED, California

Brief Legal Description BLOCK COR NW QUAD. INTER. ILLINOIS AVE + POACHECO BLVD.

SECTION 15, T10S R10E MDM



**CORNER TYPE**

Government Corner  Control   
Meander  Property   
Rancho  Other   
Date of Survey 3-15-93

**COORDINATES**  
(Optional)

N. 203010.8  
E. 1895647.1  
Zone 3 Datum 21'  
Elev. \_\_\_\_\_

Corner -- Left as found  Found and tagged  Established  Reestablished  Rebuilt

Identification and type of corner found: Evidence used to identify or procedure used to establish or reestablish the corner: 1" I.D.F. Pipe No TAG REF 12/OP/14 MERCED CO. REC.

A description of the physical condition of the monument as found and as set or reset: Pipe lightly corroded DN 0<sup>6</sup>, Top flared - To be destroyed by construction.

**SURVEYOR'S STATEMENT**

This Corner Record was prepared by me or under my direction in conformance with the Land Surveyors' Act on 3-15 1993.

Signed Ralph Scheel L.S. or R.C.L. Number 3730  
PARTY CHIEF, CALTRANS License Expiration Date \_\_\_\_\_

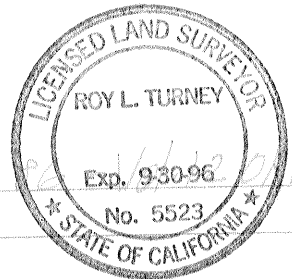


**COUNTY SURVEYOR'S STATEMENT**

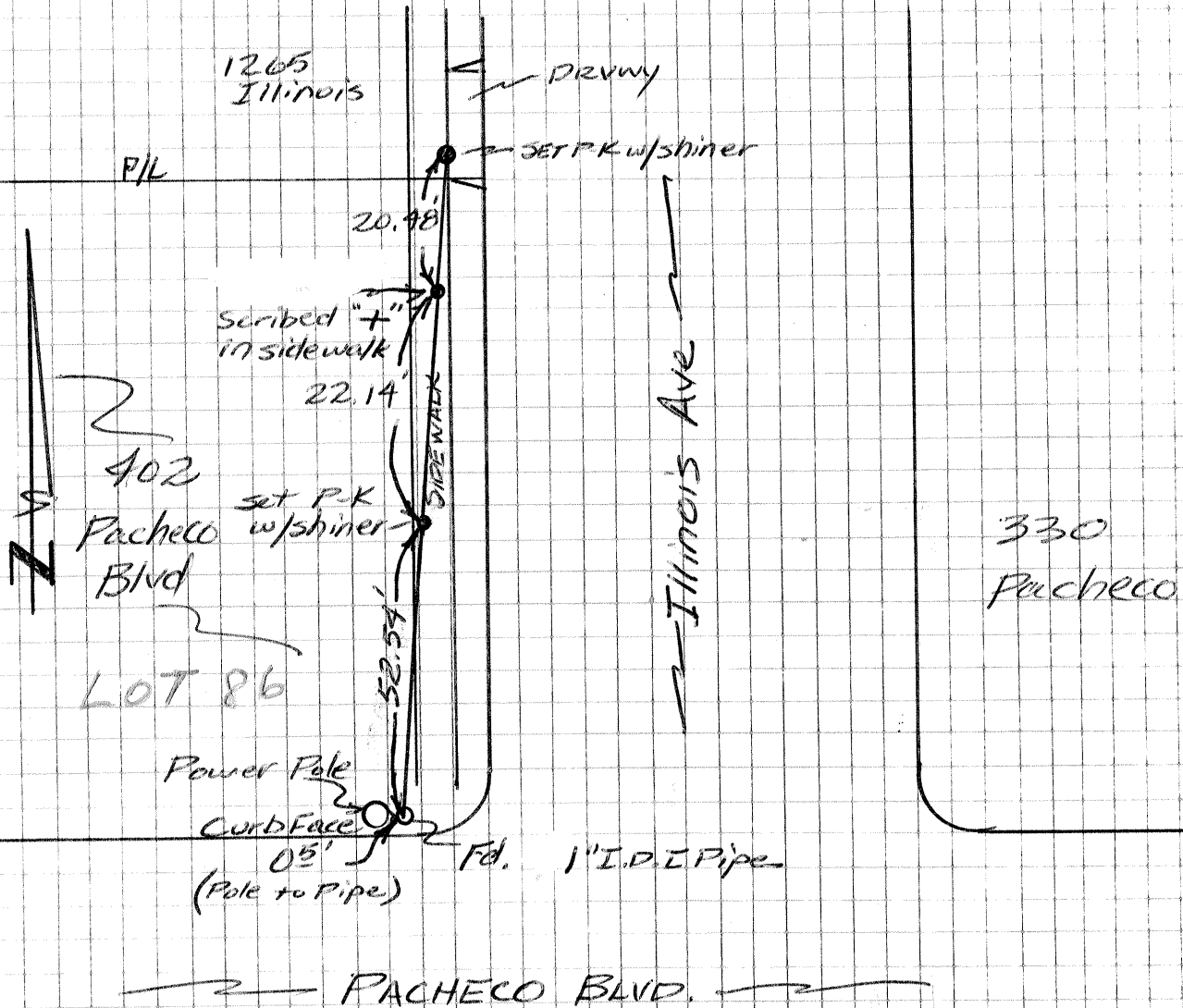
This Corner Record was received 2-23 1994 and examined and filed 2-25 1994.

Signed Roy Turney Title DEP. CO. SUR.

County Surveyor's Comment Possible S.E. COR. LOT



Section 15  
T103, R10E, MDM



The ties shown hereon are for the purpose of perpetuating the monumentation currently existing. No attempt was made to determine the validity of the monuments or their proper location in relation to local boundary lines in the area.