

COUNTY OF Merced T. 10 R. 10 MERIDIAN CALIFORNIA

CORNER TYPE: GOV'T. CORNER MEANDER RANCHO CONTROL OTHER

CORNER IDENTIFICATION — DATE OF VISIT April 21, 1988



CORNER — LEFT AS FOUND FOUND AND TAGGED REESTABLISHED OBLITERATED CORNER REBUILT

PHYSICAL DESCRIPTION OF CORNER FOUND; EVIDENCE AND METHOD USED TO IDENTIFY OR REESTABLISH

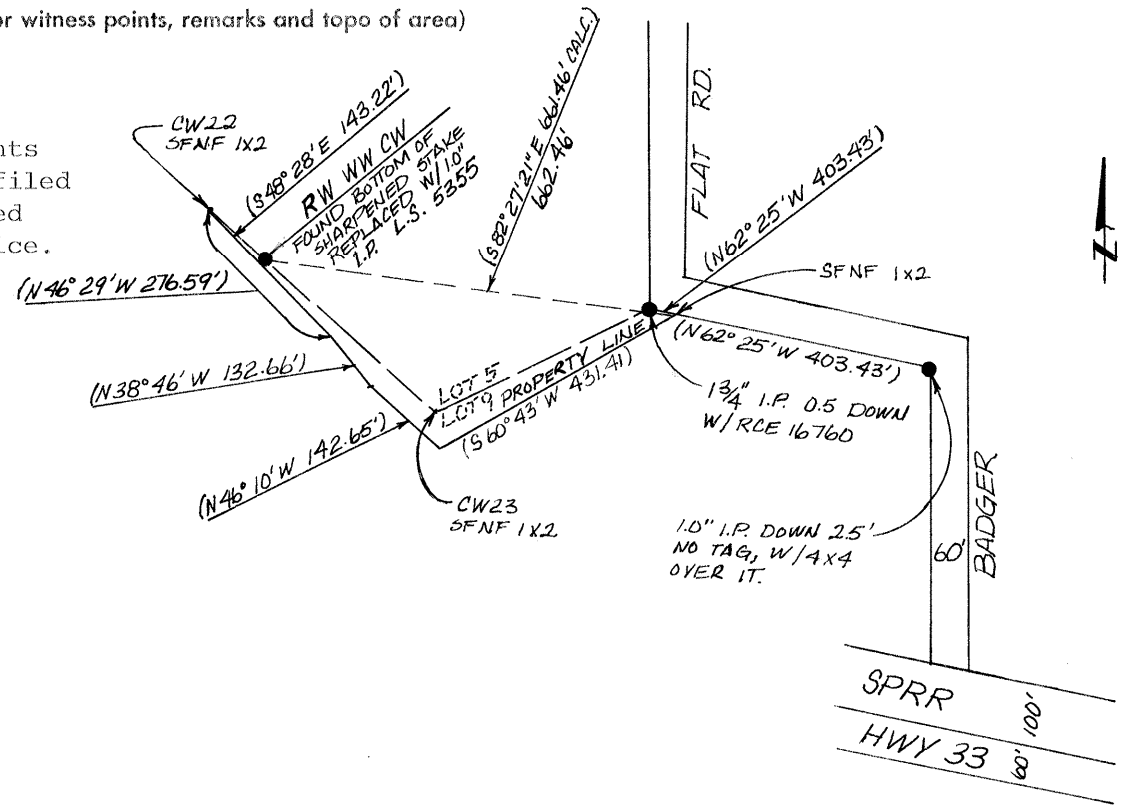
Found the sharpened bottom of redwood stake at the position indicated as "RW WW CW" on the Map filed at 4-C-18 in the Merced County Surveyor's Office.

PHYSICAL DESCRIPTION OF MONUMENTS REBUILT OR PERPETUATED

Replace with a 1" O.D. x 28" galvanized iron pipe with plastic plug marked LS 5355.

SKETCH: (Include reference tie or witness points, remarks and topo of area)

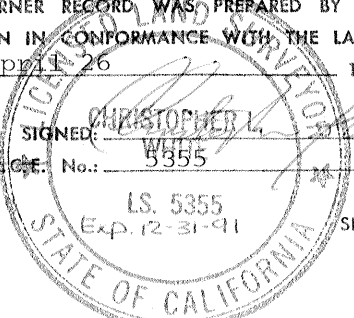
Description of monuments found check with Map filed at 4-C-18 in the Merced County Surveyor's Office.



SURVEYOR'S CERTIFICATE

THIS CORNER RECORD WAS PREPARED BY ME OR UNDER MY DIRECTION IN CONFORMANCE WITH THE LAND SURVEYORS ACT ON April 26, 1988

SIGNED: CHRISTOPHER L. WILSON
L.S. or R.C.E. No.: 5355



COUNTY SURVEYOR'S CERTIFICATE

THE CORNER RECORD WAS RECEIVED 5-17 1988 AND EXAMINED AND FILED 5-17 1988

BY: Roy Tamm, Exp. 9/30/88
TITLE: Active County Surveyor
DOCUMENT No. 3648-N

STATEMENT ON BACK OF SHEET

YES NO