

CORNER RECORD

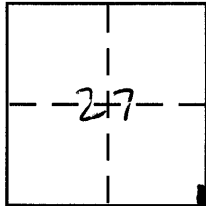
Document Number 3643-S

City of _____

County of MERCED, California

Brief Legal Description Lot 64 Page Colony

S.O.P.S.M.C.R.



CORNER TYPE

Government Corner Control
 Meander Property
 Rancho Other
 Date of Survey 11-14-07

COORDINATES (Optional)

N. _____
 E. _____
 Zone _____ NAD27 NAD83
 NAD83 Epoch _____
 Elev. _____
 Vert. Datum: NGVD29 NAVD88
 Meas. Units: Metric Imperial

Corner - Left as found Found and tagged Established Reestablished Rebuilt

Identification and type of corner found: Evidence used to identify or procedure used to establish or reestablish the corner:

SEE SKETCH

A description of the physical condition of the monument as found and as set or reset:

SEE SKETCH

SURVEYOR'S STATEMENT

This Corner Record was prepared by me or under my direction in conformance with the Land Surveyor's Act on 12-18-07

Signed [Signature] P.L.S or R.C.E. No. _____



COUNTY SURVEYOR'S STATEMENT

This Corner Record was received December 18, 2007

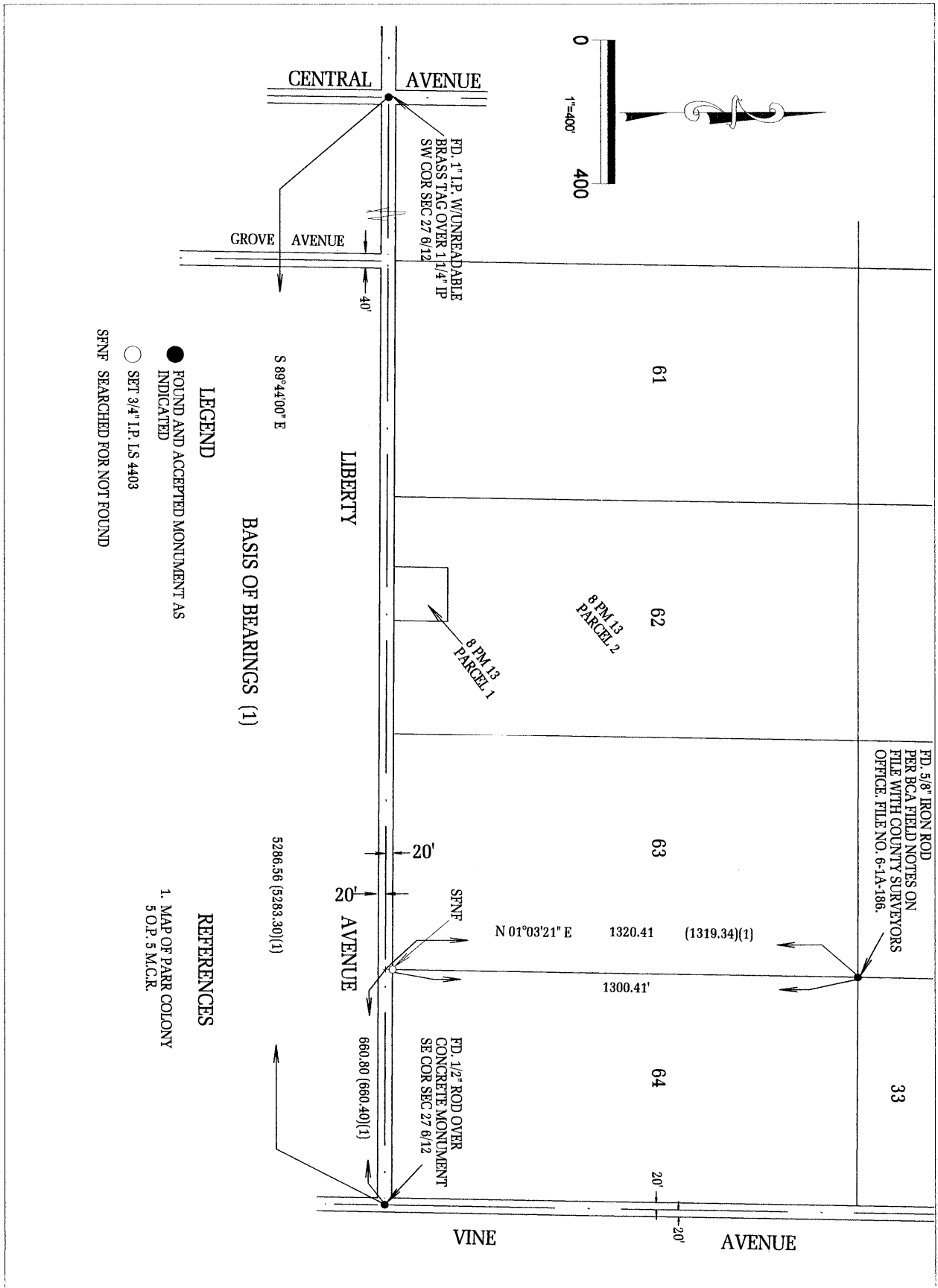
and examined and filed December 18, 2007

Signed [Signature] P.L.S or R.C.E. No. 4895

Title Dep. County Surveyor



County Surveyor's Comment _____



LEGEND

- FOUND AND ACCEPTED MONUMENT AS INDICATED
- SET 3/4" I.P. LS 4403

SPNF SEARCHED FOR NOT FOUND

REFERENCES

1. MAP OF PARR COLONY
5 O.P. 5 M.C.R.

BASIS OF BEARINGS (1)