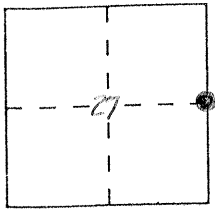


CORN' RECORD

Document Number 307 2-3640

City of _____ County of MERCED, California

Brief Legal Description EAST 1/4 CORNER SECTION 27 T.6S. R.12E.



CORNER TYPE

COORDINATES (Optional)

- Government Corner Control
- Meander Property
- Rancho Other
- Date of Survey _____

N. _____
 E. _____
 Zone _____ Datum _____
 Elev. _____

Corner — Left as found Found and tagged Established Reestablished Rebuilt

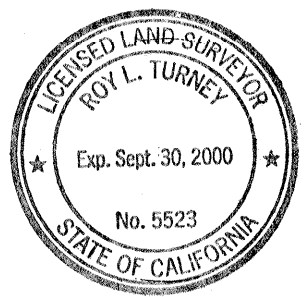
Identification and type of corner found: Evidence used to identify or procedure used to establish or reestablish the corner:

A description of the physical condition of the monument as found and as set or reset: _____
FOUND 1/4" I.P. BROUGHT TO SURFACE WITH 5/8" I.R. TAGGED COUNTY
SURVEYOR.

SURVEYOR'S STATEMENT

This Corner Record was prepared by me or under my direction in conformance with the Land Surveyors' Act on 2-4 1997.

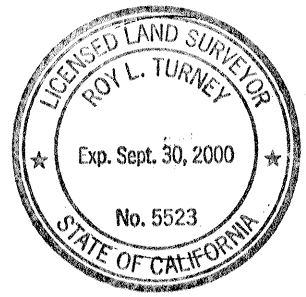
Signed Roy L. Turney L.S. or P.C.E. Number 5523



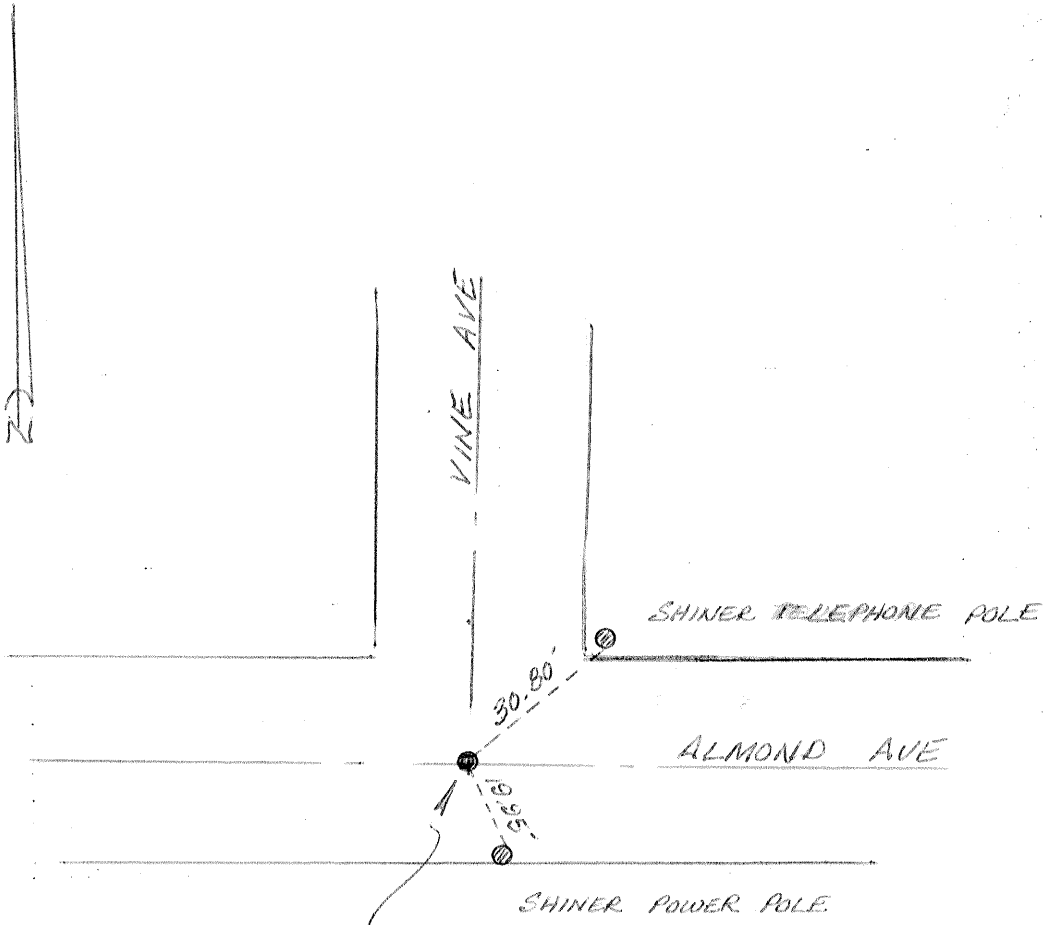
COUNTY SURVEYOR'S STATEMENT

This Corner Record was received 2-18- 1997 and examined and filed 2-18 1997.

Signed Roy L. Turney Title DEP. CO. SUR.



County Surveyor's Comment _____



FOUND 1 1/4" IRON PIPE BROUGHT TO SURFACE WITH 5/8" IRON ROD TAGGED COUNTY SURVEYOR