

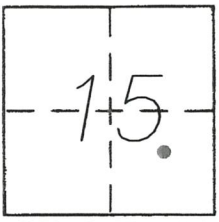
CORNER RECORD

Document Number 3625-FF

City of _____

County of MERCED, California

Brief Legal Description SOUTHEAST CORNER OF LOT 49 AS SHOWN ON MEADOW BROOK TRACT ADDITION No.1 12 O.P. 46, M.C.R.



CORNER TYPE

- Government Corner Control
- Meander Property
- Rancho Other
- Date of Survey SEPTEMBER 14, 2016

COORDINATES (Optional)

- N. _____
- E. _____
- Zone _____ NAD27 NAD83
- NAD83 Epoch _____
- Elev. _____
- Vert. Datum: NGVD29 NAVD88
- Meas. Units: Metric Imperial

T.7S. R13E. M.D.B.&M.

Corner - Left as found Found and tagged Established Reestablished Rebuilt

Identification and type of corner found: Evidence used to identify or procedure used to establish or reestablish the corner:
SEE MAP ON REVERSE SIDE

RESET THE SOUTHEAST CORNER BY PRORATION

A description of the physical condition of the monument as found and as set or reset: _____

SURVEYOR'S STATEMENT

This Corner Record was prepared by me or under my direction in conformance with the Land Surveyor's Act on SEPTEMBER, 15 2016

Signed [Signature] P.L.S or B.C.E. No. 7825



COUNTY SURVEYOR'S STATEMENT

This Corner Record was received JUNE 7th 2018

and examined and filed JUNE 26th, 2018

Signed Zach T. Janz P.L.S or B.C.E. No. 8664

Title COUNTY SURVEYOR

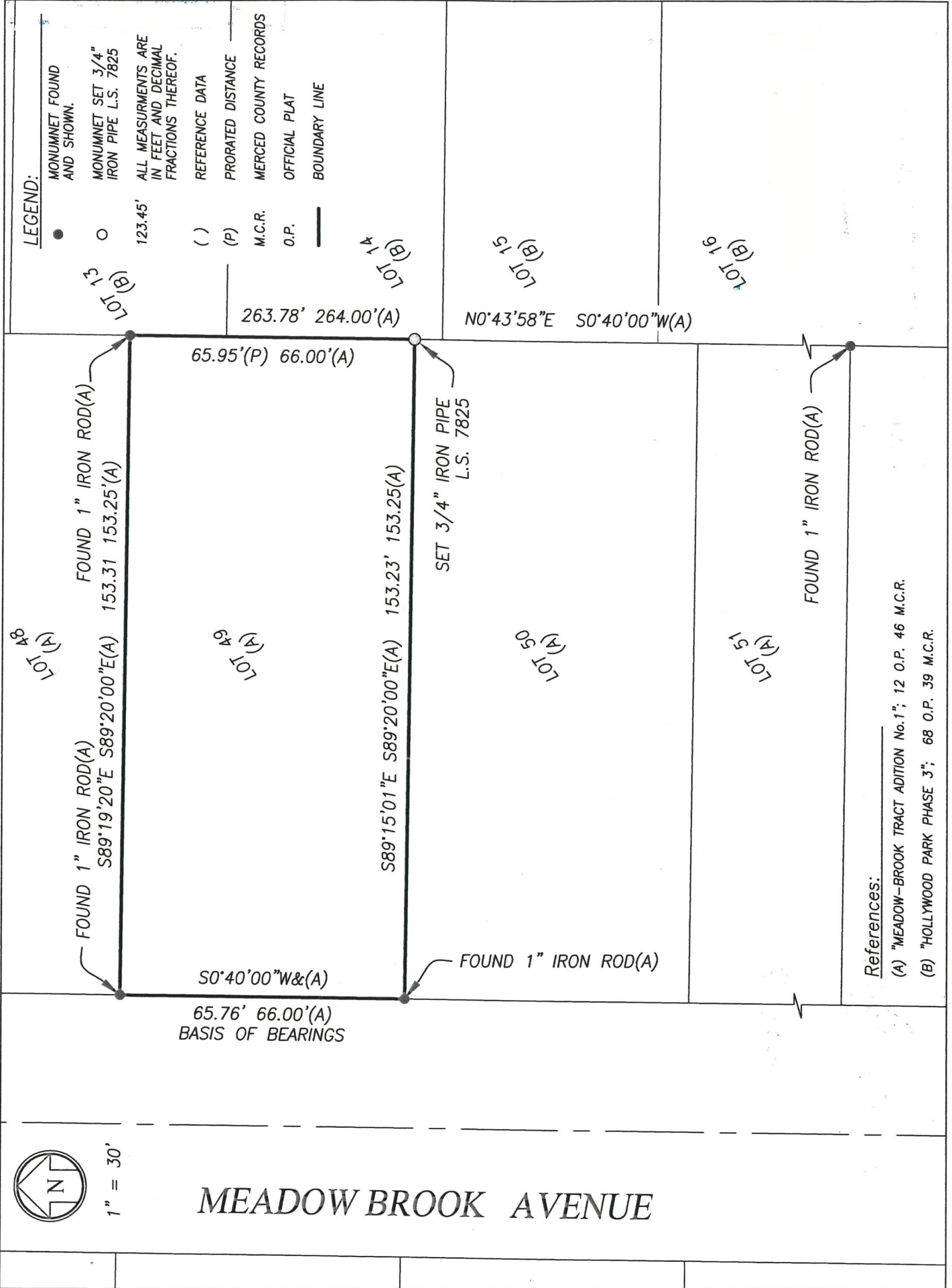


County Surveyor's Comment _____



1" = 30'

MEADOW BROOK AVENUE



LEGEND:

- MONUMENT FOUND AND SHOWN.
- MONUMENT SET 3/4" IRON PIPE L.S. 7825
- 123.45' ALL MEASUREMENTS ARE IN FEET AND DECIMAL FRACTIONS THEREOF.
- () REFERENCE DATA
- (P) PRORATED DISTANCE
- M.C.R. MERCED COUNTY RECORDS
- O.P. OFFICIAL PLAT
- BOUNDARY LINE

References:

(A) "MEADOW-BROOK TRACT ADDITION No.1"; 12 O.P. 46 M.C.R.

(B) "HOLLYWOOD PARK PHASE 3"; 68 O.P. 39 M.C.R.