

CORNER RECORD

Agency Index 3625-EE

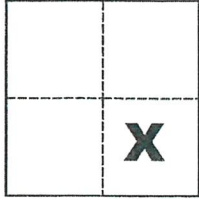
Document Number _____

City of _____ County of Merced, California

Brief Legal Description SW Cor. of Lot 26 per 19 O.P. 46, M.C.R.

CORNER TYPE

COORDINATES (Optional)



Government Corner Control
Meander Property
Rancho Other

N. _____ E. _____

Elevation _____

Units Metric U.S. Survey Foot

Horizontal Datum _____

Zone _____ Epoch Date _____

Vertical Datum _____

Date of Survey April 12, 2018

Complies with Public Resources Code §§8801-8819

Complies with Public Resources Code §§8890-8902

Sec. 15, T.7S., R.13E.,
M.D.B. & M.

PLS Act Ref.: 8765(d) 8771 8773 Other:

Corner/Monument: Left as found Established Rebuilt Pre-Construction

Found and tagged Reestablished Referenced Post-Construction

Narrative of corner identified and monument as found, set, reset, replaced, or removed:

See sheet #2 for description(s):

SURVEYOR'S STATEMENT

This Corner Record was prepared by me or under my direction in conformance with

the Professional Land Surveyors' Act on April 23, 2018

Signed Michael L. Quarantani P.L.S. or R.C.E. No. L.S. 4450



COUNTY SURVEYOR'S STATEMENT

This Corner Record was received APRIL 23, 2018

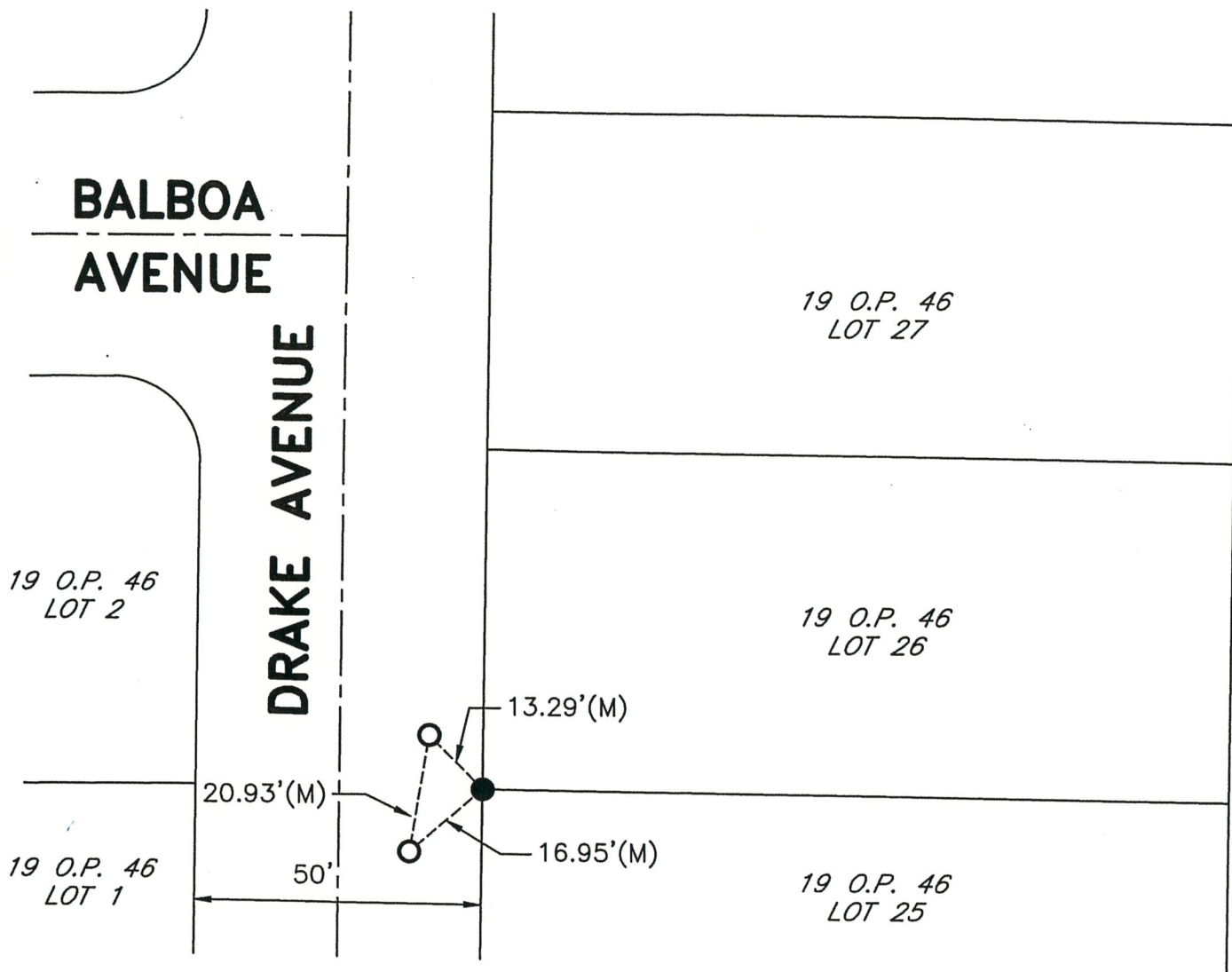
and examined and filed MAY 29, 2018

Signed Zachary T. Janz P.L.S. or R.C.E. No. 8664

Title COUNTY SURVEYOR

County Surveyor's Comment





LEGEND

- INDICATES SET MAG SPIKE W/WASHER STAMPED LS 4450
- INDICATES FOUND 3/4" IRON PIPE PER (A) AT BOW
- (M) INDICATES MEASURED ON THIS SURVEY
- O.P. INDICATES OFFICIAL PLAT, VOLUME AND PAGE, M.C.R.
- M.C.R. INDICATES MERCED COUNTY RECORDS
- BOW INDICATES BACK OF WALK

REFERENCE

(A) 19 O.P. 46, M.C.R.



SCALE: 1" = 30'
2018-98