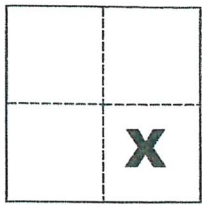


CORNER RECORD

Agency Index 3625-EE (2)
Document Number _____

City of _____ County of Merced, California
Brief Legal Description SW Cor. of Lot 26 per 19 O.P. 46, M.C.R.



CORNER TYPE
Government Corner Control
Meander Property
Rancho Other

COORDINATES (Optional)
N. _____ E. _____
Elevation _____
Units Metric U.S. Survey Foot
Horizontal Datum _____
Zone _____ Epoch Date _____
Vertical Datum _____

Sec. 15, T.7S., R.13E.,
M.D.B. & M.

Complies with Public Resources Code §§8801-8819
 Complies with Public Resources Code §§8890-8902

PLS Act Ref.: 8765(d) 8771 8773 Other:
Corner/Monument: Left as found Established Rebuilt Pre-Construction
 Found and tagged Reestablished Referenced Post-Construction

Narrative of corner identified and monument as found, set, reset, replaced, or removed:
 See sheet #2 for description(s):

SURVEYOR'S STATEMENT

This Corner Record was prepared by me or under my direction in conformance with
the Professional Land Surveyors' Act on May 21, 2018
Signed Michael L. Quaranta P.L.S. or R.C.E. No. L.S. 4450

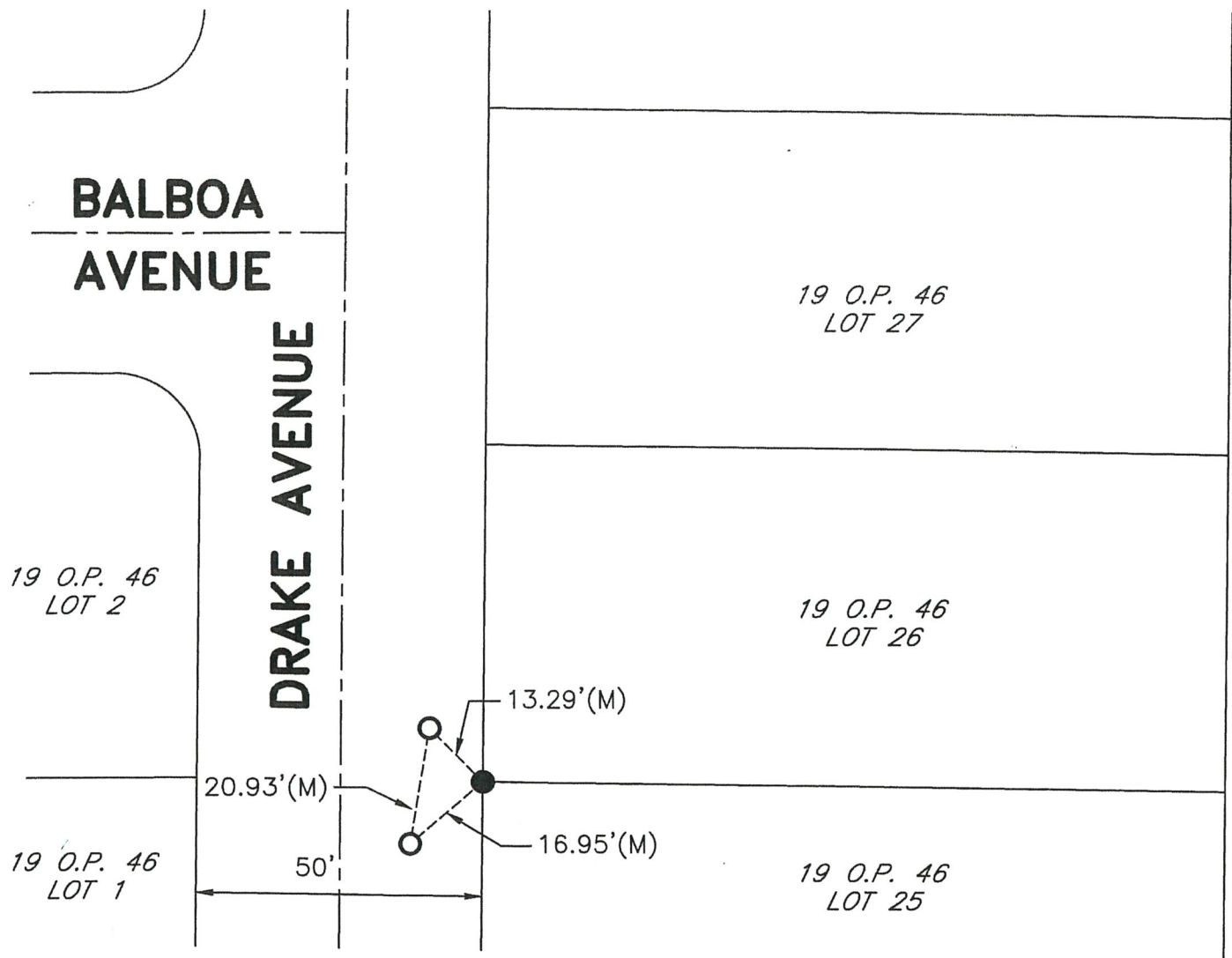


COUNTY SURVEYOR'S STATEMENT

This Corner Record was received MAY 21, 2018
and examined and filed MAY 29, 2018
Signed Zach T. Janz P.L.S. or R.C.E. No. 8664
Title COUNTY SURVEYOR

County Surveyor's Comment _____





LEGEND

- INDICATES FOUND MAG SPIKE W/WASHER STAMPED LS 4450
- INDICATES FOUND 3/4" IRON PIPE PER (A) AT BOW
- (M) INDICATES MEASURED ON THIS SURVEY
- O.P. INDICATES OFFICIAL PLAT, VOLUME AND PAGE, M.C.R.
- M.C.R. INDICATES MERCED COUNTY RECORDS
- BOW INDICATES BACK OF WALK

REFERENCE

(A) 19 O.P. 46, M.C.R.



SCALE: 1" = 30'
2018-98