

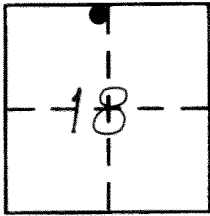
CORNER RECORD

Document Number 3619-XXXX

City of MERCED

County of MERCED, California

Brief Legal Description RIGHT OF WAY MONUMENT AT THE SOUTH WEST CORNER OF YOSEMITE AVE. AND M STREET



T7S, R14E

CORNER TYPE

Government Corner Control
 Meander Property
 Rancho Other
 Date of Survey 7-8-2013

COORDINATES (Optional)

N. _____
 E. _____
 Zone NAD27 NAD83
 NAD83 Epoch _____
 Elev. _____
 Vert. Datum: NGVD29 NAVD88
 Meas. Units: Metric Imperial

Corner - Left as found Found and tagged Established Reestablished Rebuilt

Identification and type of corner found: Evidence used to identify or procedure used to establish or reestablish the corner:

FOUND 3/4" IRON PIPE WITH L.S. 4998 TAG AS SHOWN ON

OFFICIAL MAP OF YOSEMITE WEST, 28 O.P. 29, M.C.R.

MONUMENT MAY BE DESTROYED WITH CONSTRUCTION PROJECT.

A description of the physical condition of the monument as found and as set or reset: _____

SURVEYOR'S STATEMENT

This Corner Record was prepared by me or under my direction in conformance with

the Land Surveyor's Act on JULY 12, 2013

Signed David D. Heinrichs P.L.S. or R.C.E. No. 7621



COUNTY SURVEYOR'S STATEMENT

This Corner Record was received July 11, 2013

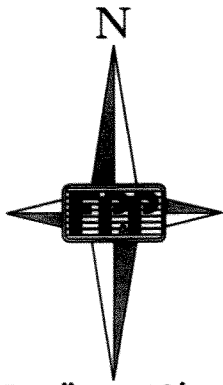
and examined and filed July 29, 2013

Signed J. Steven Reichmuth P.L.S. or R.C.E. No. 4895

Title County Surveyor

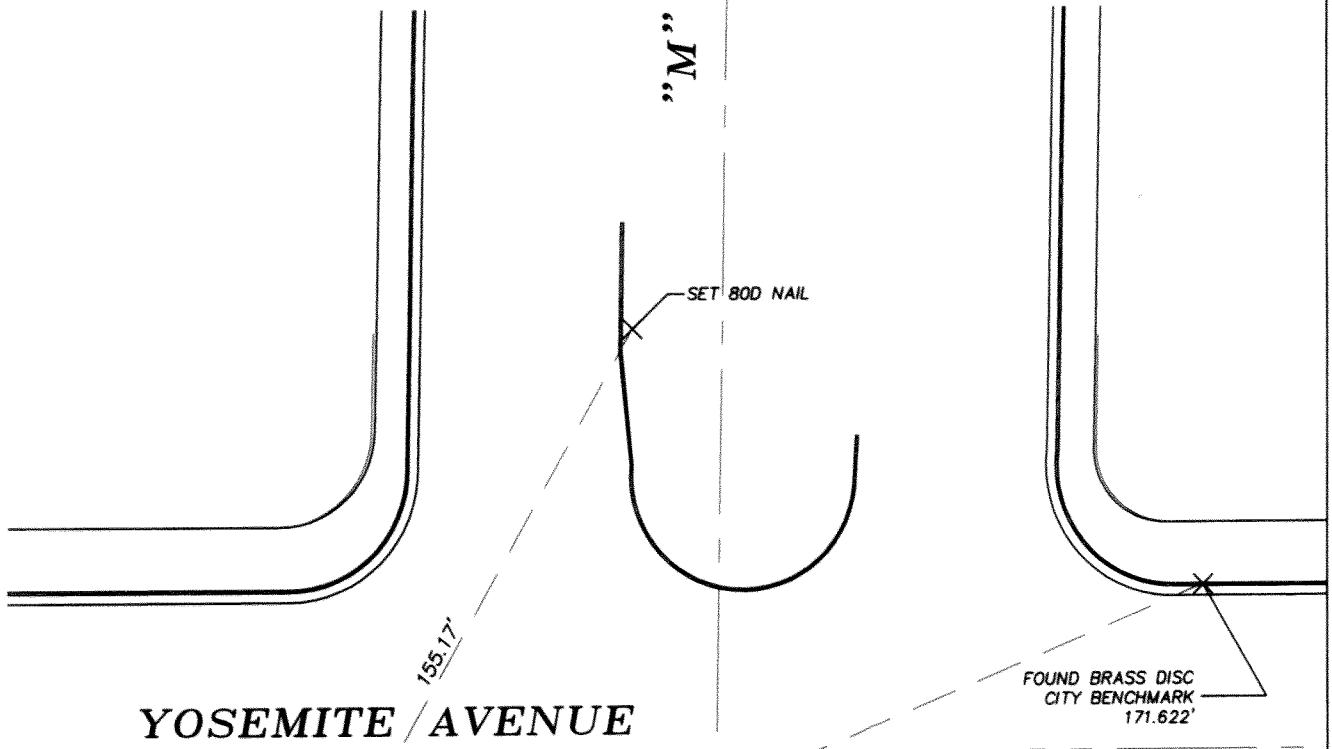
County Surveyor's Comment _____





SCALE 1" = 40'

"M" STREET



YOSEMITE AVENUE

