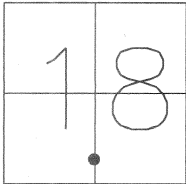


CORNER RECORD

Document Number 3619-VV VV

City of MERCED County of MERCED, California

Brief Legal Description SECTION 18, T.7S., R14E., M.D.B.&M.



T7S, R14E

Government Corner  Control   
Meander  Property   
Rancho  Other   
Date of Survey 7-2-09

COORDINATES (Optional)

N. \_\_\_\_\_  
E. \_\_\_\_\_  
Zone \_\_\_\_\_ NAD27  NAD83   
NAD83 Epoch \_\_\_\_\_  
Elev. \_\_\_\_\_  
Vert. Datum: NGVD29  NAVD88   
Meas. Units: Metric  Imperial

Corner - Left as found  Found and tagged  Established  Reestablished  Rebuilt

Identification and type of corner found: Evidence used to identify or procedure used to establish or reestablished the corner:  
FOUND 1-1/2" O.D. IRON PIPE TAGGED "COUNTY SURVEYOR" IN MONUMENT BOX AT THE INTERSECTION OF OLIVE AVENUE AND "M" STREET AS SHOWN IN VOLUME 6 OF PARCEL MAPS AT PAGE 49, MERCED COUNTY RECORDS.

A description of the physical condition of the monument as found and as set or reset: \_\_\_\_\_  
LEFT AS FOUND, MAY BE DESTROYED DURING CONSTRUCTION PROJECT.

SURVEYOR'S STATEMENT

This Corner Record was prepared by me or under my direction in conformance with the Land Surveyors' Act on NOVEMBER 19, 2009.

Signed [Signature] L.S. 6953



COUNTY SURVEYOR'S STATEMENT

This Corner Record was received November 23, 2009 and examined and filed November 30, 2009.

Signed [Signature] P.L.S. No. 4895

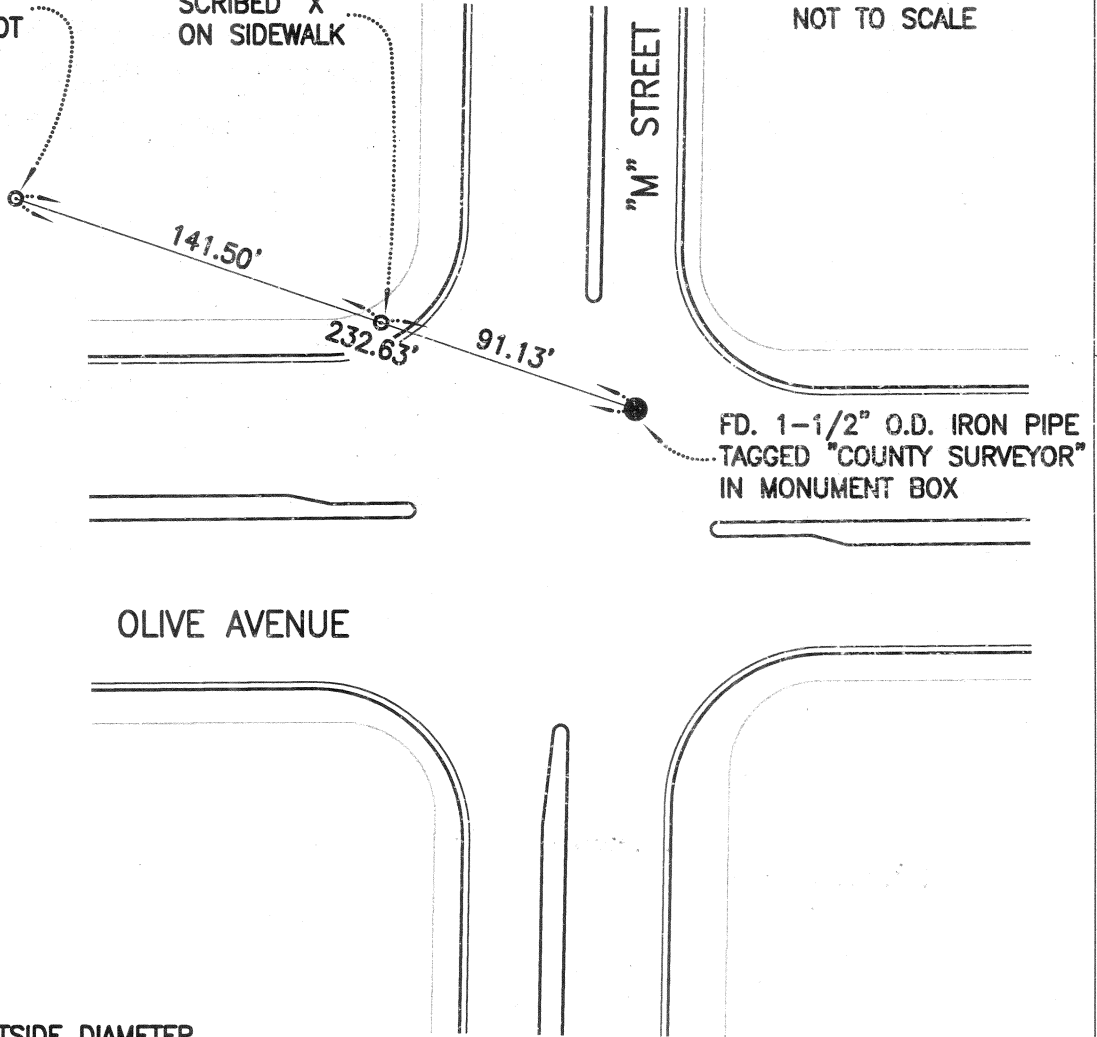
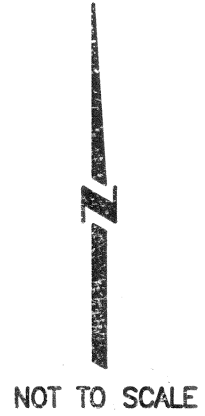
Title Deputy County Surveyor



County Surveyors Comment \_\_\_\_\_

PK NAIL IN  
PARKING LOT

SCRIBED "X"  
ON SIDEWALK



O.D. = OUTSIDE DIAMETER

NOTE: THIS CORNER RECORD DOES NOT VERIFY  
THIS MONUMENT TO BE IN THE CORRECT POSITION.