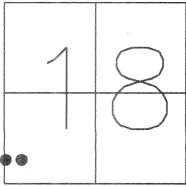


CORNER RECORD

Document Number 3619-UUUU

City of MERCED County of MERCED, California

Brief Legal Description SECTION 18, T.7S., R.14E., M.D.B.&M.



Government Corner Control
Meander Property
Rancho Other
Date of Survey 7-2-09

COORDINATES (Optional)

N. _____
E. _____
Zone _____ NAD27 NAD83
NAD83 Epoch _____
Elev. _____
Vert. Datum: NGVD29 NAVD88
Meas. Units: Metric Imperial

Corner - Left as found Found and tagged Established Reestablished Rebuilt

Identification and type of corner found: Evidence used to identify or procedure used to establish or reestablished the corner:
FOUND 1-1/2" O.D. IRON PIPE TAGGED "COUNTY SURVEYOR" IN MONUMENT BOX AND A BROKEN SPIKE AT THE NORTHWESTERLY CORNER OF THE INTERSECTION OF OLIVE AVENUE AND "R" STREET AS SHOWN IN VOLUME 15 OF PARCEL MAPS AT PAGE 19, MERCED COUNTY RECORDS.

A description of the physical condition of the monument as found and as set or reset: _____
LEFT AS FOUND, MAY BE DESTROYED DURING CONSTRUCTION PROJECT.

SURVEYOR'S STATEMENT

This Corner Record was prepared by me or under my direction in conformance with the Land Surveyors' Act on NOVEMBER 19, 2009.

Signed [Signature] L.S. 6953



COUNTY SURVEYOR'S STATEMENT

This Corner Record was received November 23, 2009 and examined and filed November 30, 2009.

Signed [Signature] P.L.S. No. 4895

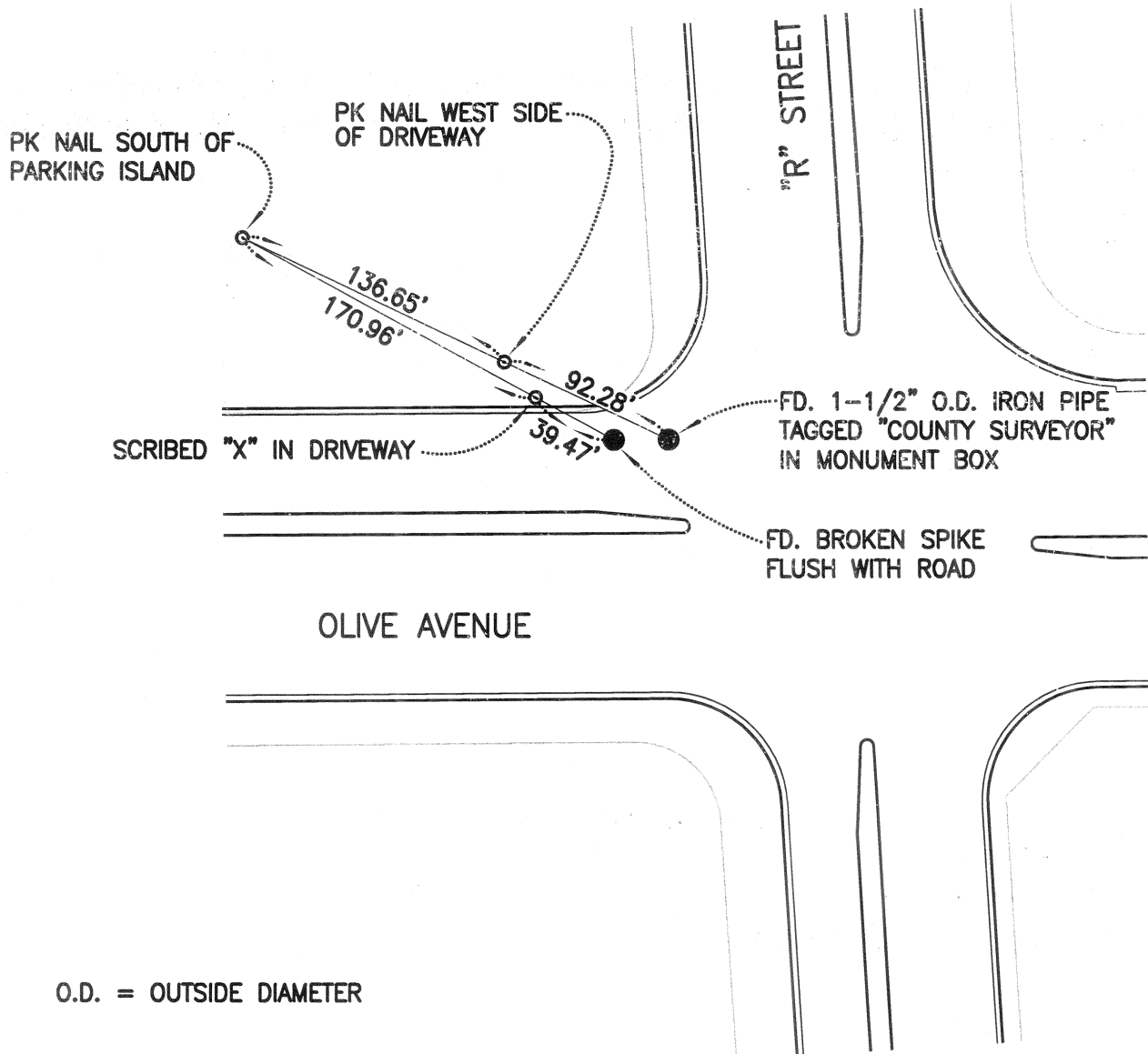
Title Deputy County Surveyor



County Surveyors Comment _____



NOT TO SCALE



O.D. = OUTSIDE DIAMETER

NOTE: THIS CORNER RECORD DOES NOT VERIFY THIS MONUMENT TO BE IN THE CORRECT POSITION.