

CORNER RECORD

Agency Index 3619-C5

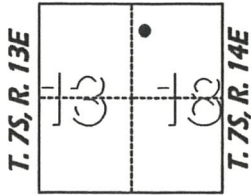
Document Number _____

City of MERCED County of MERCED, California

Brief Legal Description S. W. CORNER PARCEL A PER 75 P.M. 42

CORNER TYPE

COORDINATES (Optional)



- Government Corner
- Meander
- Rancho
- Control
- Property
- Other

Date of Survey August 17, 2018

N. _____ E. _____

Elevation _____

Units Metric U.S. Survey Foot

Horizontal Datum _____

Zone _____ Epoch Date _____

Vertical Datum _____

Complies with Public Resources Code §§8801-8819

Complies with Public Resources Code §§8890-8902

PLS Act Ref.: 8765(d) 8771 8773 Other:

Corner/Monument: Left as found Established Rebuilt Pre-Construction

Found and tagged Reestablished Referenced Post-Construction

Narrative of corner identified and monument as found, set, reset, replaced, or removed:

See sheet #2 for description(s):

SURVEYOR'S STATEMENT

This Corner Record was prepared by me or under my direction in conformance with the Professional Land Surveyors' Act on September 26, 2018

Signed Duane J. Andrews P.L.S. or R.C.E. No. 4052



COUNTY SURVEYOR'S STATEMENT

This Corner Record was received MARCH 7, 2019

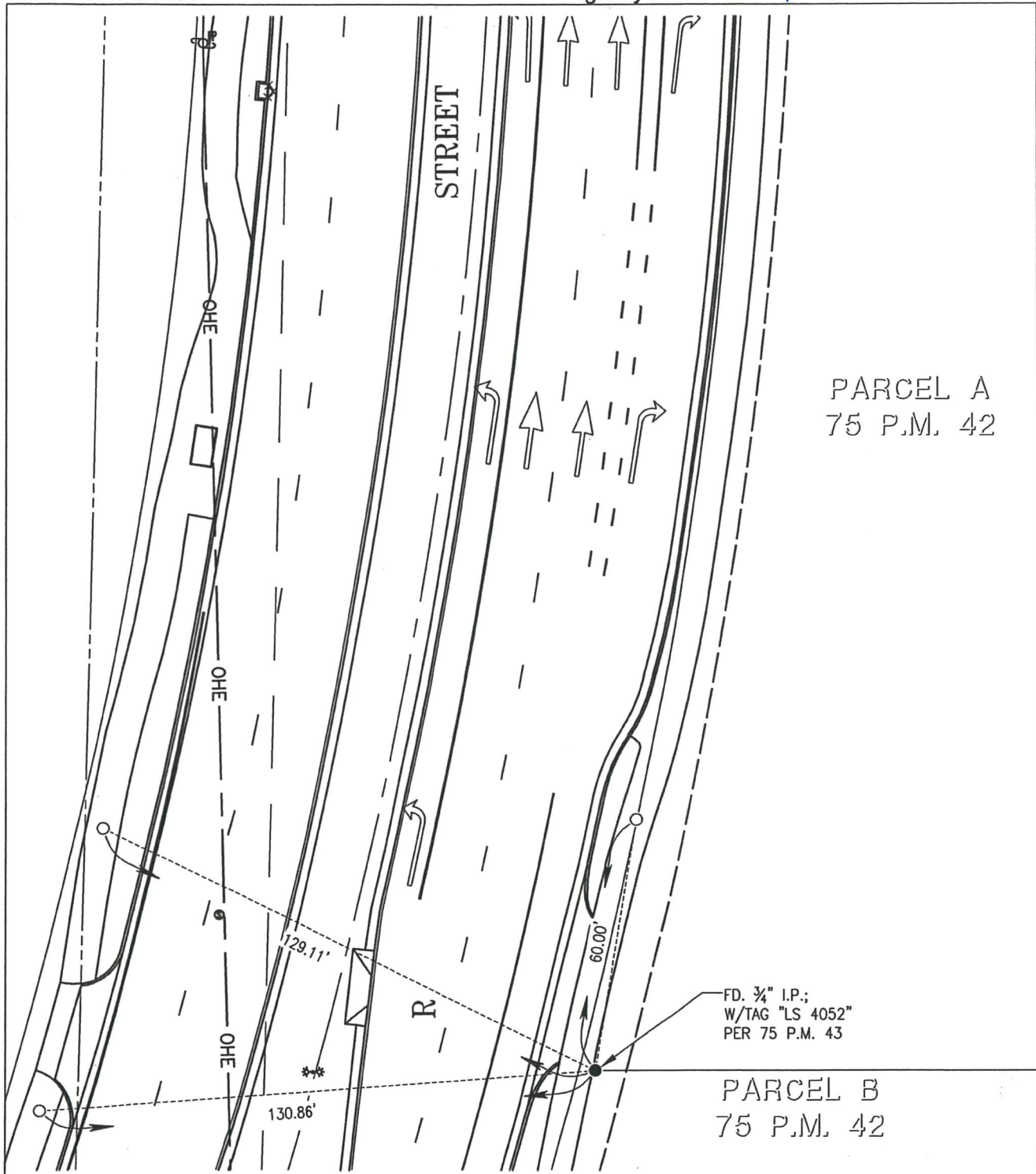
and examined and filed MARCH 7, 2019

Signed Zachary T. Janz P.L.S. or R.C.E. No. 8664

Title COUNTY SURVEYOR

County Surveyor's Comment





PARCEL A
75 P.M. 42

PARCEL B
75 P.M. 42

FD. 3/4" I.P.;
W/TAG "LS 4052"
PER 75 P.M. 43

LEGEND:

- FOUND MONUMENT AS NOTED
- SET SMALL DRILL HOLE OR AS NOTED
- IP IRON PIPE
- FD. FOUND
- S.N.F SEARCHED, NOTHING FOUND

