

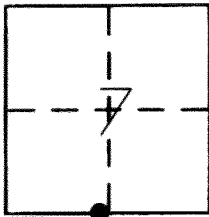
# CORNER RECORD

Document Number 3618-F

City of MERCED

County of MERCED, California

Brief Legal Description CENTER LINE INTERSECTION MONUMENT FOR YOSEMITE AVENUE AND "M" STREET



T7S, R14E

### CORNER TYPE

Government Corner  Control   
 Meander  Property   
 Rancho  Other   
 Date of Survey 6-19-2013

### COORDINATES (Optional)

N. \_\_\_\_\_  
 E. \_\_\_\_\_  
 Zone            NAD27  NAD83   
 NAD83 Epoch \_\_\_\_\_  
 Elev. \_\_\_\_\_  
 Vert. Datum: NGVD29  NAVD88   
 Meas. Units: Metric  Imperial

Corner - Left as found  Found and tagged  Established  Reestablished  Rebuilt

Identification and type of corner found: Evidence used to identify or procedure used to establish or reestablish the corner:

FOUND 5/8" IRON BAR WITH NO TAG AT SURFACE AS SHOWN ON

MAP OF HEADLINER HOMES NO.4, 22 O.P. 39, M.C.R.

MONUMENT MAY BE DESTROYED WITH CONSTRUCTION PROJECT.

A description of the physical condition of the monument as found and as set or reset: \_\_\_\_\_

### SURVEYOR'S STATEMENT

This Corner Record was prepared by me or under my direction in conformance with the Land Surveyor's Act on JULY 12, 2013

Signed [Signature] P.L.S or R.G.E. No. 7621



### COUNTY SURVEYOR'S STATEMENT

This Corner Record was received July 11, 2013

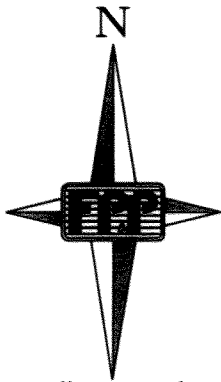
and examined and filed July 24, 2013

Signed [Signature] P.L.S or R.G.E. No. 4895

Title County Surveyor

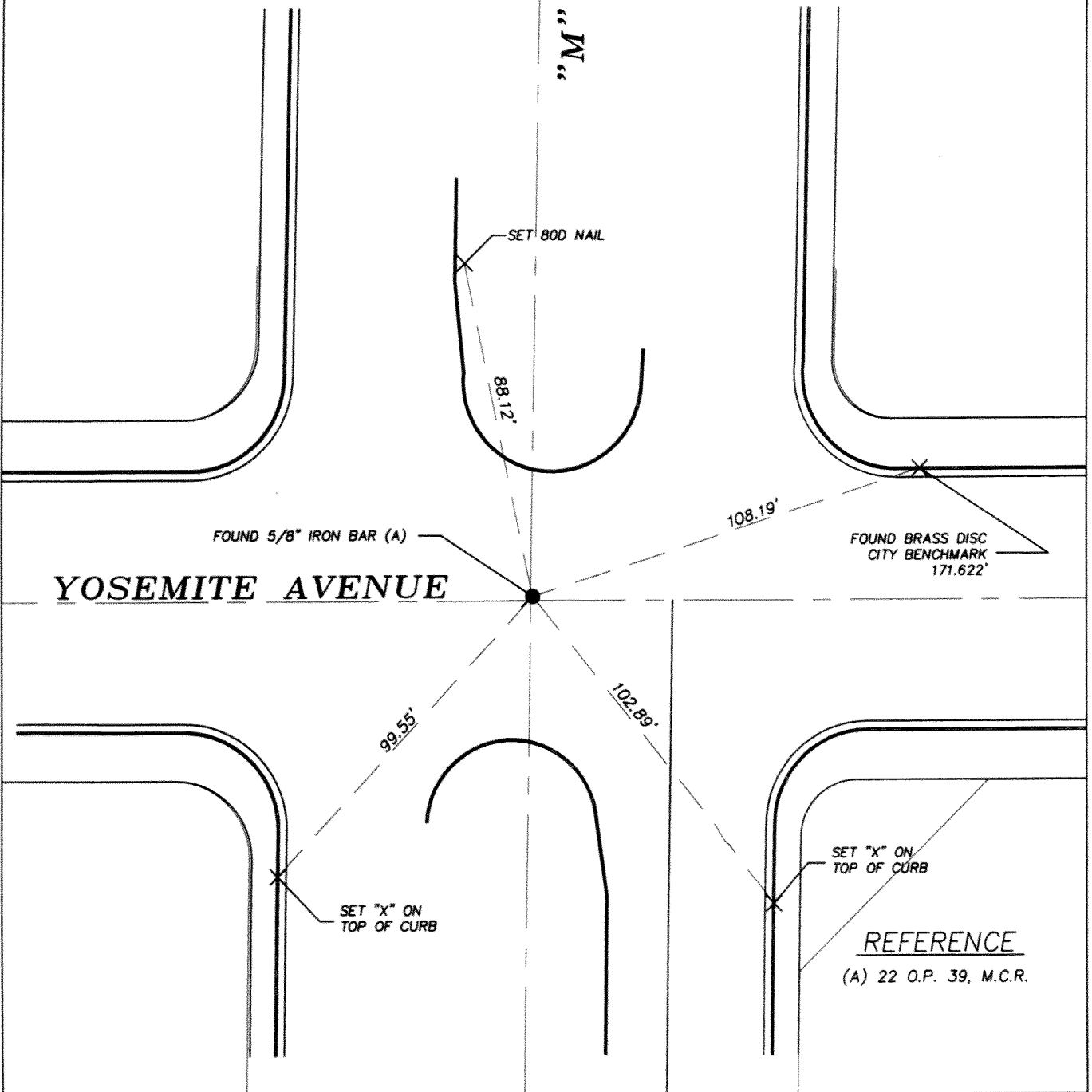
County Surveyor's Comment \_\_\_\_\_





SCALE 1" = 40'

"M" STREET



FOUND BRASS DISC  
CITY BENCHMARK  
171.622'

SET "X" ON  
TOP OF CURB

REFERENCE

(A) 22 O.P. 39, M.C.R.