

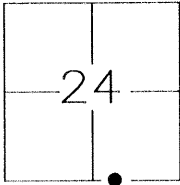
CORNER RECORD

Document Number 3579-0

City of LIVINGSTON

County of MERCED, California

Brief Legal Description



CORNER TYPE

- Government Corner Control
- Meander Property
- Rancho Other

Date of Survey 9/27/05

COORDINATES (Optional)

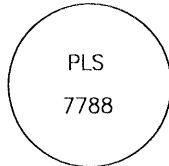
N. _____
 E. _____
 Zone _____ Datum _____
 Elev. _____

Corner Left as found Found and tagged Established Reestablished Rebuilt

Identification and type of corner found : Evidence used to identify or procedure used to establish or reestablish the corner:

FD. 3/4" IRON PIPE TAGGED "LS 7788"
PER 92-PM-15

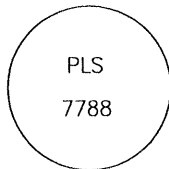
SEE SKETCH



A description of the physical condition of the monument as found and as set or reset:

SET 3/4" IRON PIPE TAGGED "LS 7788"
IN MONUMENT WELL

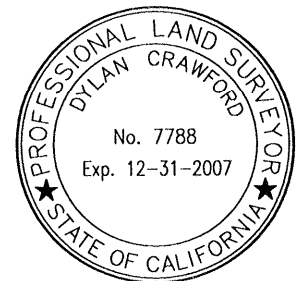
SEE SKETCH



SURVEYOR'S STATEMENT

This Corner Record was prepared by me or under my direction in conformance with the Land Surveyor's Act on October 24, 2005.

Signed Dylan Crawford P.L.S. Number 7788



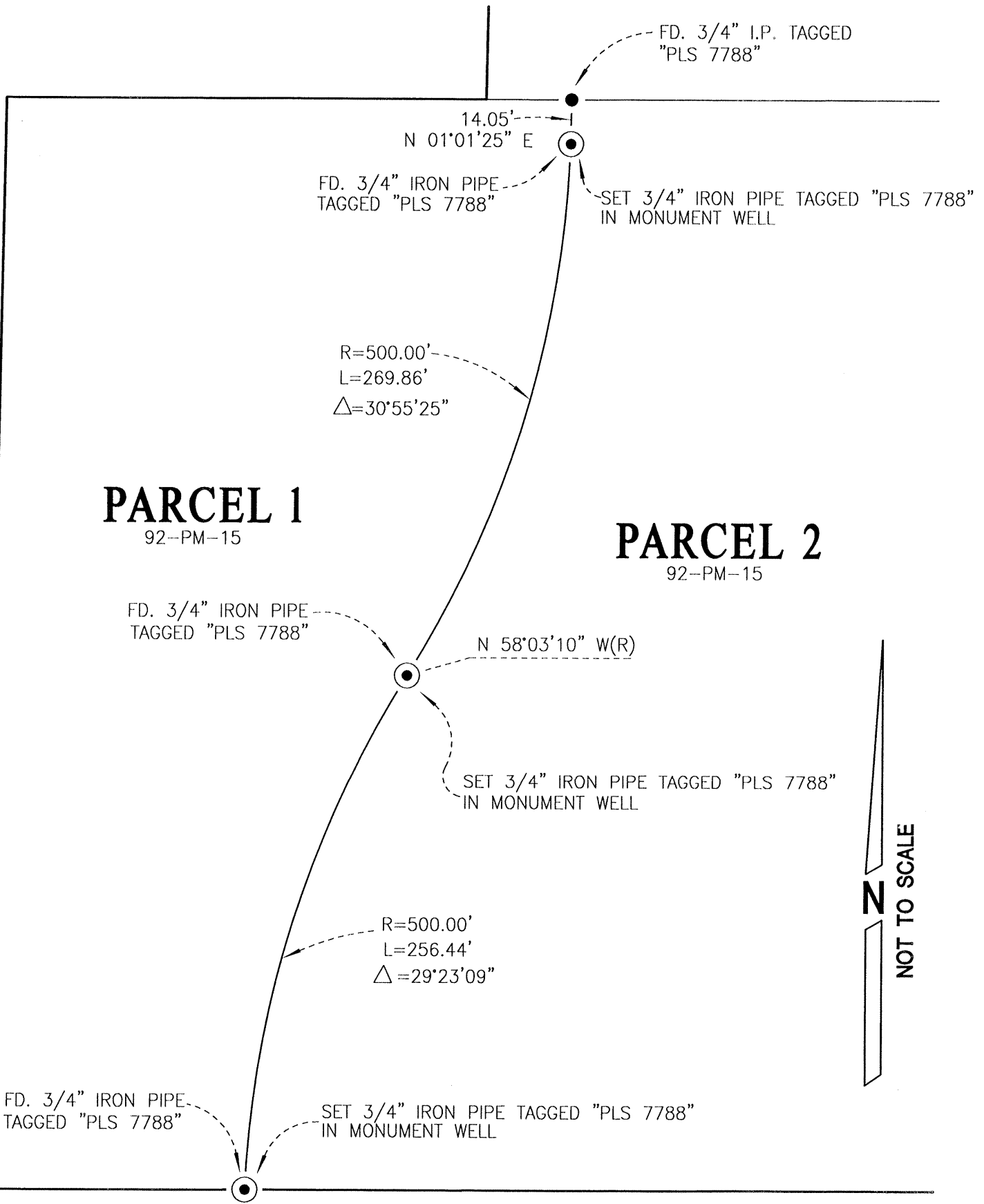
COUNTY SURVEYOR'S STATEMENT

This Corner Record was received Jan. 6, 2006 and examined and filed January 9, 2006

Signed [Signature] Title Dep. County Surveyor



County Surveyor's Comment _____



SECTION LINE

SEC. 24

SEC. 25

WALNUT

AVENUE