

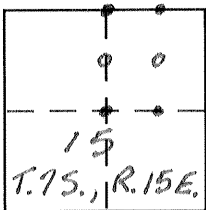
CORNER RECORD

Document Number 3504 E, F

City of _____

County of MERCED, California

Brief Legal Description LOTS 30 & 31 AS SHOWN ON "MAP OF THE BONNER FIG-ORCHARDS No. 1" RECORDED IN VOL. 7 OF PLATS AT PAGE 36, M.C.R.



CORNER TYPE

Government Corner Control
 Meander Property
 Rancho Other
 Date of Survey 10-14-98

COORDINATES (Optional)

N. _____
 E. _____
 Zone _____ NAD27 NAD83
 NAD83 Epoch _____
 Elev. _____
 Vert. Datum: NGVD29 NAVD88
 Meas. Units: Metric Imperial

Corner – Left as found Found and tagged Established Reestablished Rebuilt

Identification and type of corner found: Evidence used to identify or procedure used to establish or reestablish the corner:

SEE MAP - ON OTHER SIDE

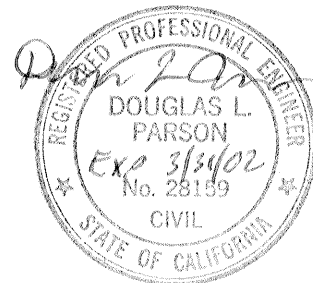
A description of the physical condition of the monument as found and as set or reset:

SEE MAP - ON OTHER SIDE

SURVEYOR'S STATEMENT

This Corner Record was prepared by me or under my direction in conformance with the Land Surveyor's Act on NOVEMBER 9, 1998

Signed _____ P.L.S or R.C.E. No. _____



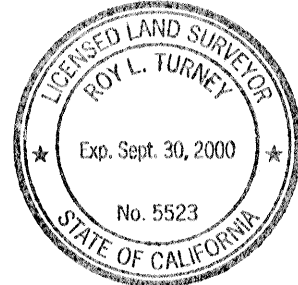
COUNTY SURVEYOR'S STATEMENT

This Corner Record was received NOVEMBER 9, 1998

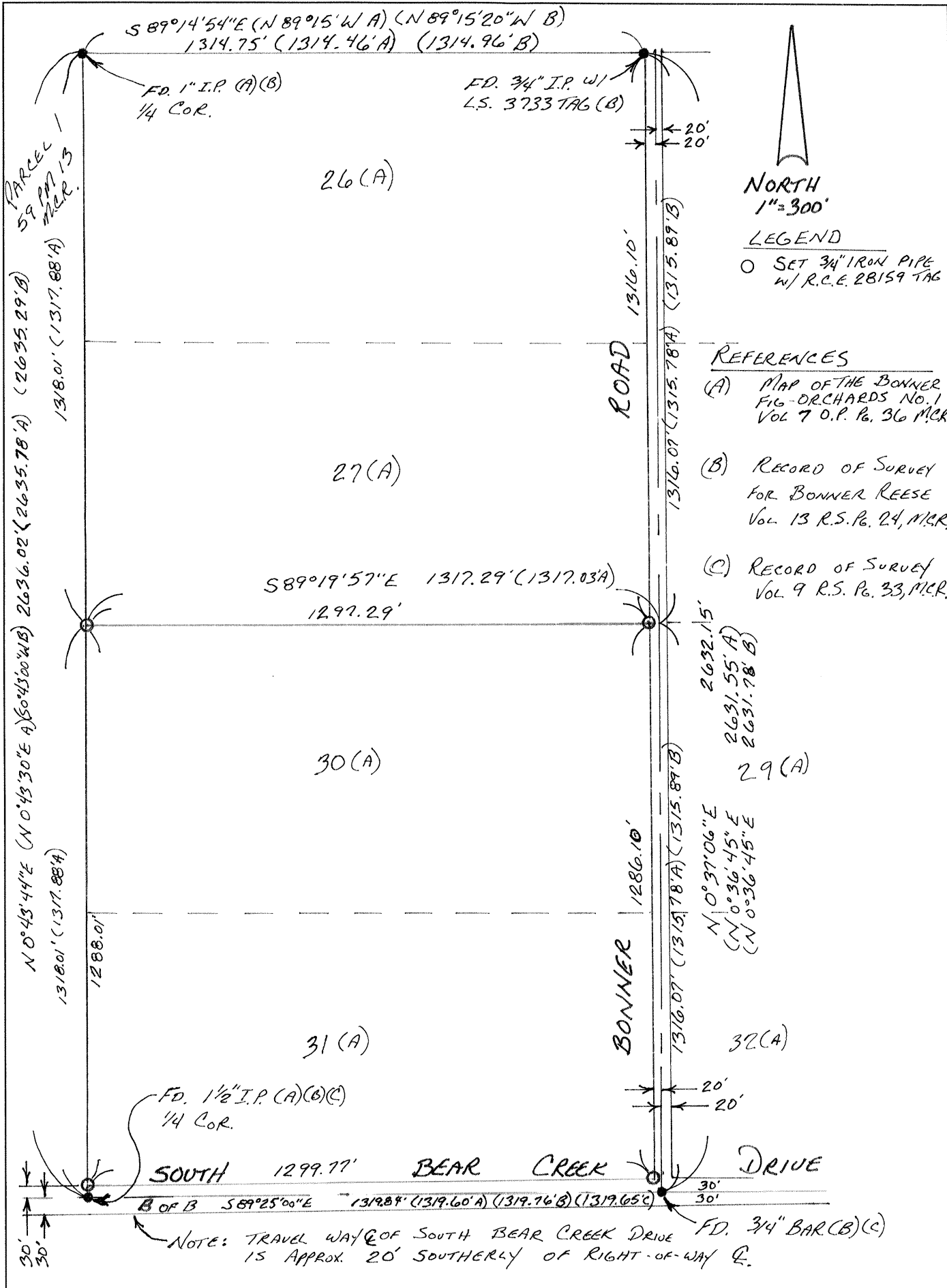
and examined and filed NOVEMBER 16, 1998

Signed Roy L. Turney P.L.S or R.C.E. No. 5523

Title DEP. CO. SURVEYOR



County Surveyor's Comment _____



NORTH
 1" = 300'
 LEGEND
 ○ SET 3/4" IRON PIPE
 W/ R.C.E. 28159 TAG

- REFERENCES
- (A) MAP OF THE BONNER FIG-ORCHARDS NO. 1 VOL 7 O.P. Pg. 36 M.C.R.
 - (B) RECORD OF SURVEY FOR BONNER REESE VOL 13 R.S.P. 24, M.C.R.
 - (C) RECORD OF SURVEY VOL 9 R.S. Pg. 33, M.C.R.