

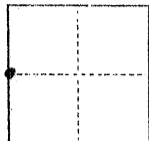
No 34c

CORNER RECORD

COUNTY OF Merced T. 8S R. 15E M.D.B.S. MERIDIAN CALIFORNIA

CORNER TYPE: GOV'T. CORNER MEANDER RANCHO CONTROL OTHER

CORNER IDENTIFICATION — DATE OF VISIT Aug 16 1976



Quarter corner west line Sec 3 and East line Sec 4

CORNER — LEFT AS FOUND FOUND AND TAGGED REESTABLISHED OBLITERATED CORNER REBUILT

PHYSICAL DESCRIPTION OF CORNER FOUND; EVIDENCE AND METHOD USED TO IDENTIFY OR REESTABLISH

Pro-rated distance from old Government Township map T8S R15E.
Field Book 711 pg 15

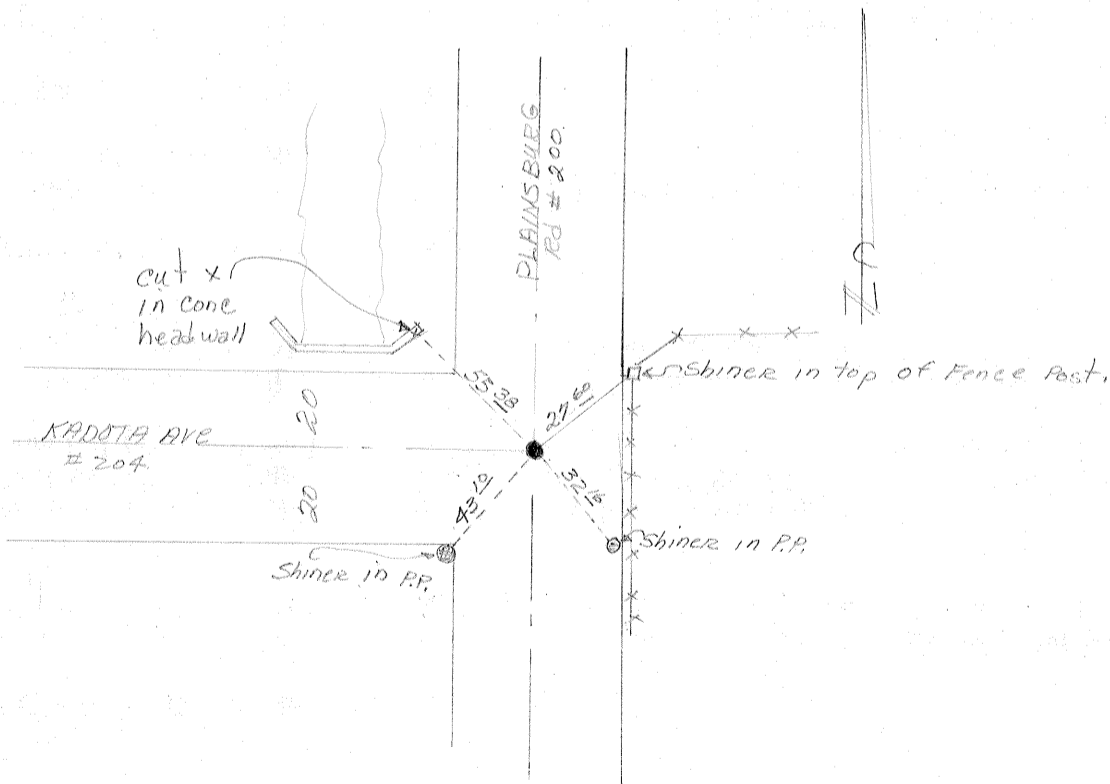
PHYSICAL DESCRIPTION OF MONUMENTS REBUILT OR PERPETUATED

Set $\frac{5}{8}$ " iron rod and tagged with R.C.E 13760

CALIFORNIA COORDINATE SYSTEM ORDER: FIRST SECOND THIRD
STATIONS USED: NGS (USC & GS) STATE COUNTY OTHER STATION _____
ZONE _____ ELEVATION _____ NORTHINGS (Y) _____ EASTINGS (X) _____

(Fold)

SKETCH: (Include reference tie or witness points, remarks and topo of area)



SURVEYOR'S CERTIFICATE

THIS CORNER RECORD WAS PREPARED BY ME OR UNDER MY DIRECTION IN CONFORMANCE WITH THE LAND SURVEYORS ACT ON _____ 19____.

SIGNED: _____

L.S. or R.C.E. No.: _____

SEAL

COUNTY SURVEYOR'S CERTIFICATE

THE CORNER RECORD WAS RECEIVED _____ 19____
AND EXAMINED AND FILED _____ 19____

BY: _____

TITLE: _____

DOCUMENT No. 3480

STATEMENT ON BACK OF SHEET

YES NO