

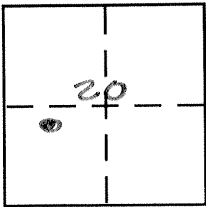
CORNER RECORD

Document Number 3448-A

City of LeGrand

County of Merced, California

Brief Legal Description S.W. Corner Lot 46 Fulton-Puntenney B.O.P. 56



8/16

CORNER TYPE

- Government Corner Control
- Meander Property
- Rancho Other
- Date of Survey 12-15-04

COORDINATES (Optional)

- N. _____
- E. _____
- Zone _____ NAD27 NAD83
- NAD83 Epoch _____
- Elev. _____
- Vert. Datum: NGVD29 NAVD88
- Meas. Units: Metric Imperial

Corner - Left as found Found and tagged Established Reestablished Rebuilt

Identification and type of corner found: Evidence used to identify or procedure used to establish or reestablish the corner:

See sketch

A description of the physical condition of the monument as found and as set or reset:

See sketch

SURVEYOR'S STATEMENT

This Corner Record was prepared by me or under my direction in conformance with the Land Surveyor's Acton 1211-05

Signed [Signature] P.L.S or R.C.E. No. _____

COUNTY SURVEYOR'S STATEMENT

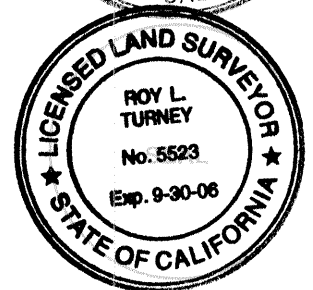
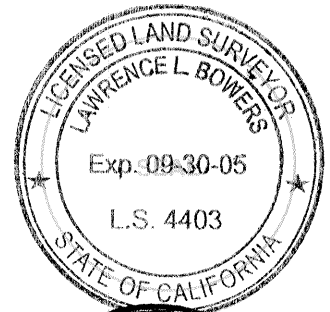
This Corner Record was received 2-2-05

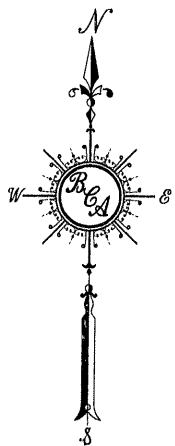
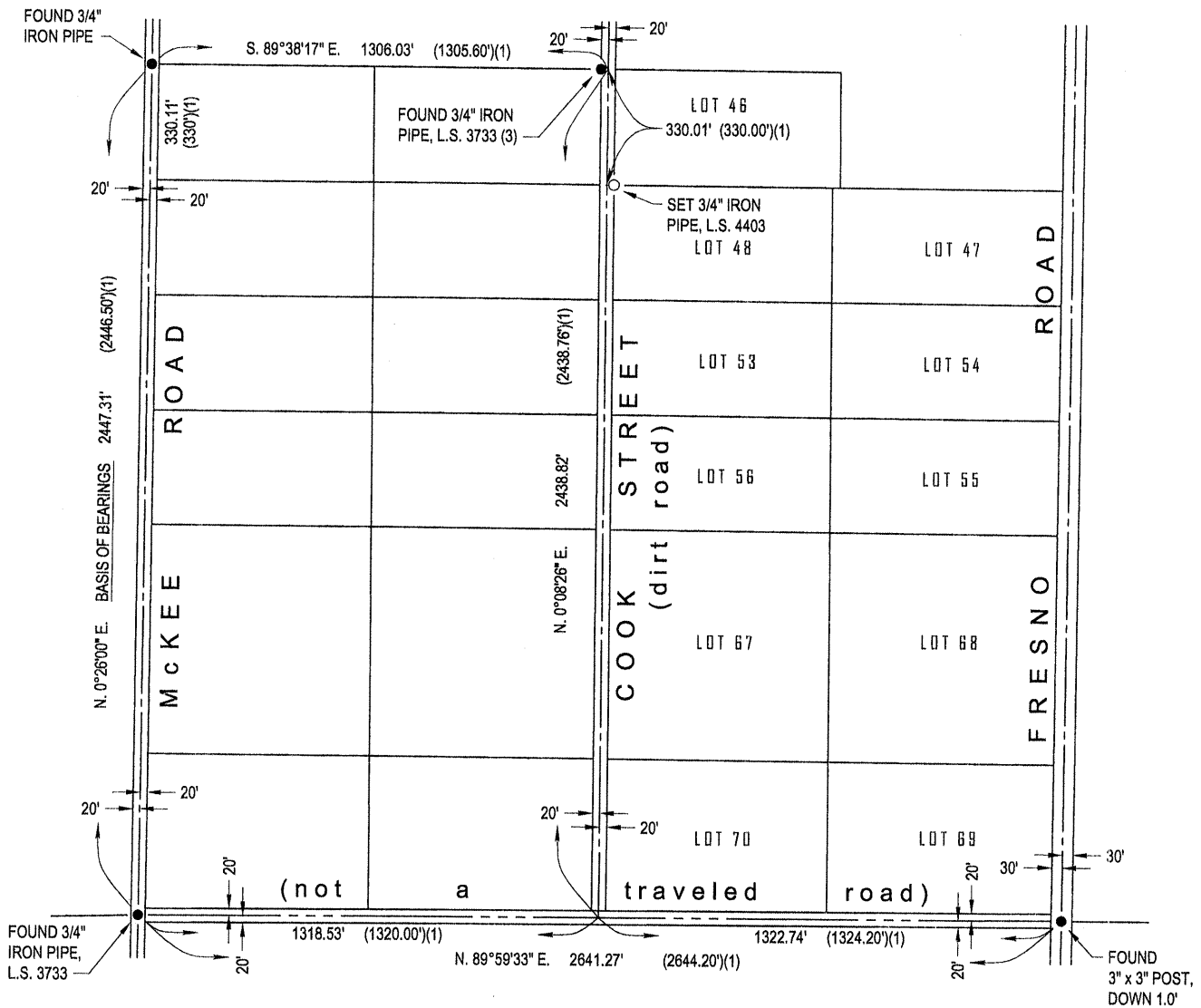
and examined and filed 2-7-05

Signed Roy L. Turney P.L.S or R.C.E. No. 5523

Title Dep. Co. Sur

County Surveyor's Comment _____





BASIS OF BEARINGS:

N. 0°26'00" E. for the centerline of McKee Road, as shown on the Map of Fulton-Puntenney Subdivision, Volume 8, Official Plats, Page 56, Merced County Records.

REFERENCES:

- (1) Map of Fulton-Puntenney Subdivision, 8 O.P. 56, M.C.R.
- (2) Parcel Map for Irene M. Lampson, 40 P.M. 33, M.C.R.
- (3) Record of Survey for Lampson/Vandergon & Morales, 40 R.S. 12, M.C.R.

