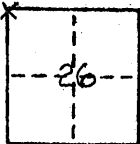


CORNER RECORD

COUNTY OF Madera T. 9 S. R. 15 E M.D.B.&M MERIDIAN CALIF.
CORNER TYPE: GOVT. CORNER [] MEANDER [] RANCHO [] CONTROL [] OTHER []
CORNER IDENTIFICATION - DATE OF VISIT Dec. 16 19 74



N.W. Cor section 26
T. 9 S., R. 15 E.; M. D. B. & M.

CORNER - LEFT AS FOUND [] FOUND AND TAGGED [] REESTABLISHED OBLITERATED CORNER [] REBUILT []

PHYSICAL DESCRIPTION OF CORNER FOUND; EVIDENCE AND METHOD USED TO IDENTIFY OR REESTABLISH

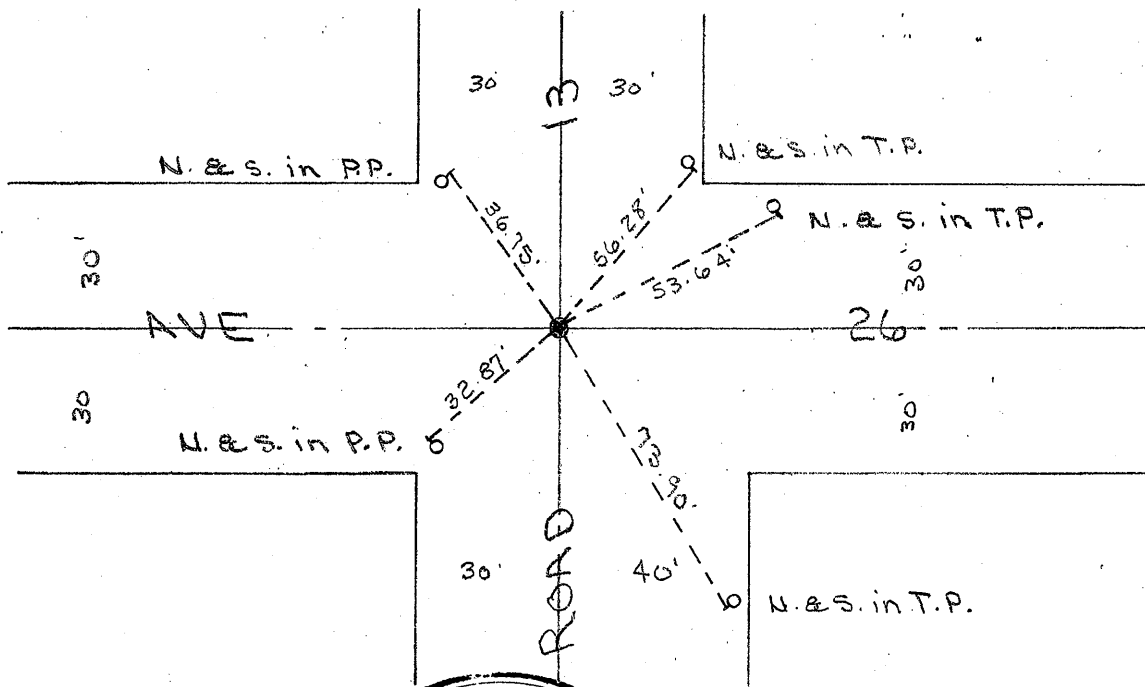
Fd. R.R. Spike

PHYSICAL DESCRIPTION OF MONUMENTS RESULT OR PERPETUATED

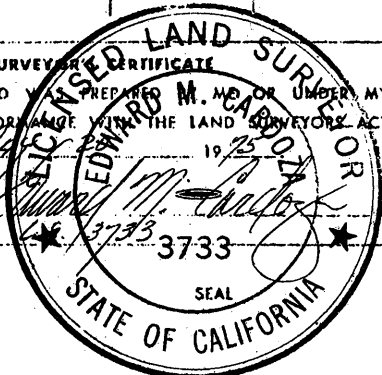
Replaced with 3/4" I.P with tag L.S. 3733

CALIFORNIA COORDINATE SYSTEM ORDER: FIRST [] SECOND [] THIRD []
STATIONS USED: NGS (USC & GS) [] STATE [] COUNTY [] OTHER [] STATION _____ STATION _____
ZONE _____ ELEVATION _____ NORTHINGS (Y) _____ EASTINGS (X) _____

SKETCH: (Include reference tie or witness points, remarks and topo of area)



SURVEYOR'S CERTIFICATE
THIS CORNER RECORD WAS PREPARED BY M. HO OR UNDER MY DIRECTION IN CONFORMANCE WITH THE LAND SURVEYORS ACT ON _____ 19 75
SIGNED: [Signature]
L.S. or R.C.E. No.: 3733



COUNTY SURVEYOR'S CERTIFICATE
THE CORNER RECORD WAS RECEIVED JUNE 2 19 74 AND EXAMINED AND FILED JUNE 5 19 75 BY: [Signature] TITLE: County Engineer
DOCUMENT No. 75-20-82
STATEMENT ON BACK OF SHEET YES [] NO [X]