

NO. 3430

COF R RECORD

COUNTY OF Merced T. 9S R. 15E Mt. Diablo MERIDIAN CALIFORNIA
CORNER TYPE: GOV'T. CORNER MEANDER RANCHO CONTROL OTHER
CORNER IDENTIFICATION — DATE OF VISIT April 4, 1977



Northwest corner of Lot 4, Block 15, (Section 15) as shown on the Map of the Bliss Ranch Subdivision filed in Volume 7 of plats at Page 39, M.C.R.

CORNER — LEFT AS FOUND FOUND AND TAGGED REESTABLISHED OBLITERATED CORNER REBUILT

PHYSICAL DESCRIPTION OF CORNER FOUND; EVIDENCE AND METHOD USED TO IDENTIFY OR REESTABLISH

Found 1-1/2" O.D. pipe with tag L.S. 656 at 1.5 below groundline

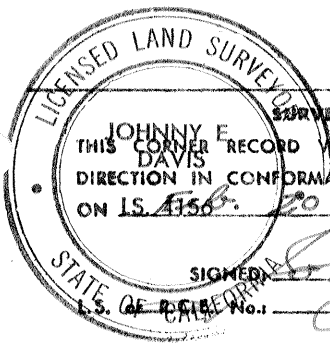
PHYSICAL DESCRIPTION OF MONUMENTS RESULT OR PERPETUATED

Found 3" x 4" redwood at 29.83 south of north 1/4 Section 15, 9/15

CALIFORNIA COORDINATE SYSTEM ORDER: FIRST SECOND THIRD
STATIONS USED: NGS (USC & GS) STATE COUNTY OTHER STATION _____ STATION _____
ZONE _____ ELEVATION _____ NORTHINGS (Y) _____ EASTINGS (X) _____

SKETCH: (Include reference tie or witness points, remarks and topo of area)

- 116.40 Northeast from nail & shiner in power pole
- 62.29 Northeast from nail & shiner in power pole
- 94.0 East from nail & shiner in power pole
- 30.0 North from 3 x 4 redwood in fence line east



SURVEYOR'S CERTIFICATE
THIS CORNER RECORD WAS PREPARED BY ME OR UNDER MY DIRECTION IN CONFORMANCE WITH THE LAND SURVEYORS ACT ON IS. 4156. 1980
SIGNED: *Johnny E. Davis*
S. OF CALIF. No. 4156

COUNTY SURVEYOR'S CERTIFICATE
THE CORNER RECORD WAS RECEIVED Feb. 25 1980 AND EXAMINED AND FILED BY: *Walter Mitchell*
TITLE: _____
DOCUMENT No. 3430
STATEMENT ON BACK OF SHEET YES NO

SEAL