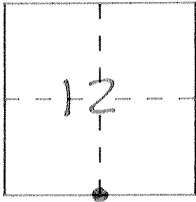


# CORNER RECORD

Document Number # 3423

City of \_\_\_\_\_ County of MERCED, California

Brief Legal Description S 1/4 SEC. 12 T9S RISE MDR:M



### CORNER TYPE

Government Corner  Control   
 Meander  Property   
 Rancho  Other   
 Date of Survey 21 DEC. 1998

### COORDINATES (Optional)

N. \_\_\_\_\_  
 E. \_\_\_\_\_  
 Zone \_\_\_\_\_ Datum \_\_\_\_\_  
 Elev. \_\_\_\_\_

Corner — Left as found  Found and tagged  Established  Reestablished  Rebuilt

Identification and type of corner found: Evidence used to identify or procedure used to establish or reestablish the corner:

FOUND CORNER MISSING; RE-ESTABLISHED PER PARCEL MAP RECORDED IN VOLUME 18 OF PARCEL MAPS, PAGE 21, MERCED COUNTY RECORDS

ADDITIONAL INFO ON SKETCH FOR REMAINING CORNERS IN SEC. 12

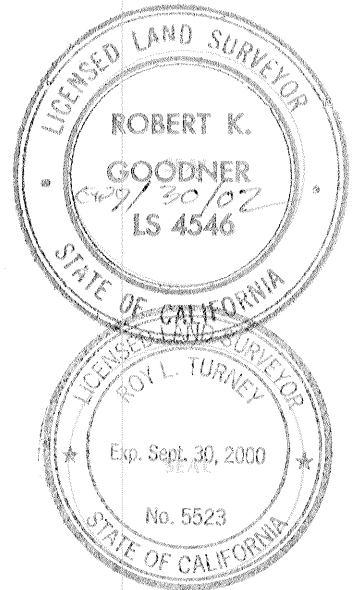
A description of the physical condition of the monument as found and as set or reset: \_\_\_\_\_

SET 3/4" X 30" IRON PIPE WITH PLASTIC YELLOW PLUG STAMPED LS 4546; DOWN 1.5'

### SURVEYOR'S STATEMENT

This Corner Record was prepared by me or under my direction in conformance with the Land Surveyors' Act on 12/22 19 98.

Signed Robert K. Goodner L.S. or R.C.E. Number 4546

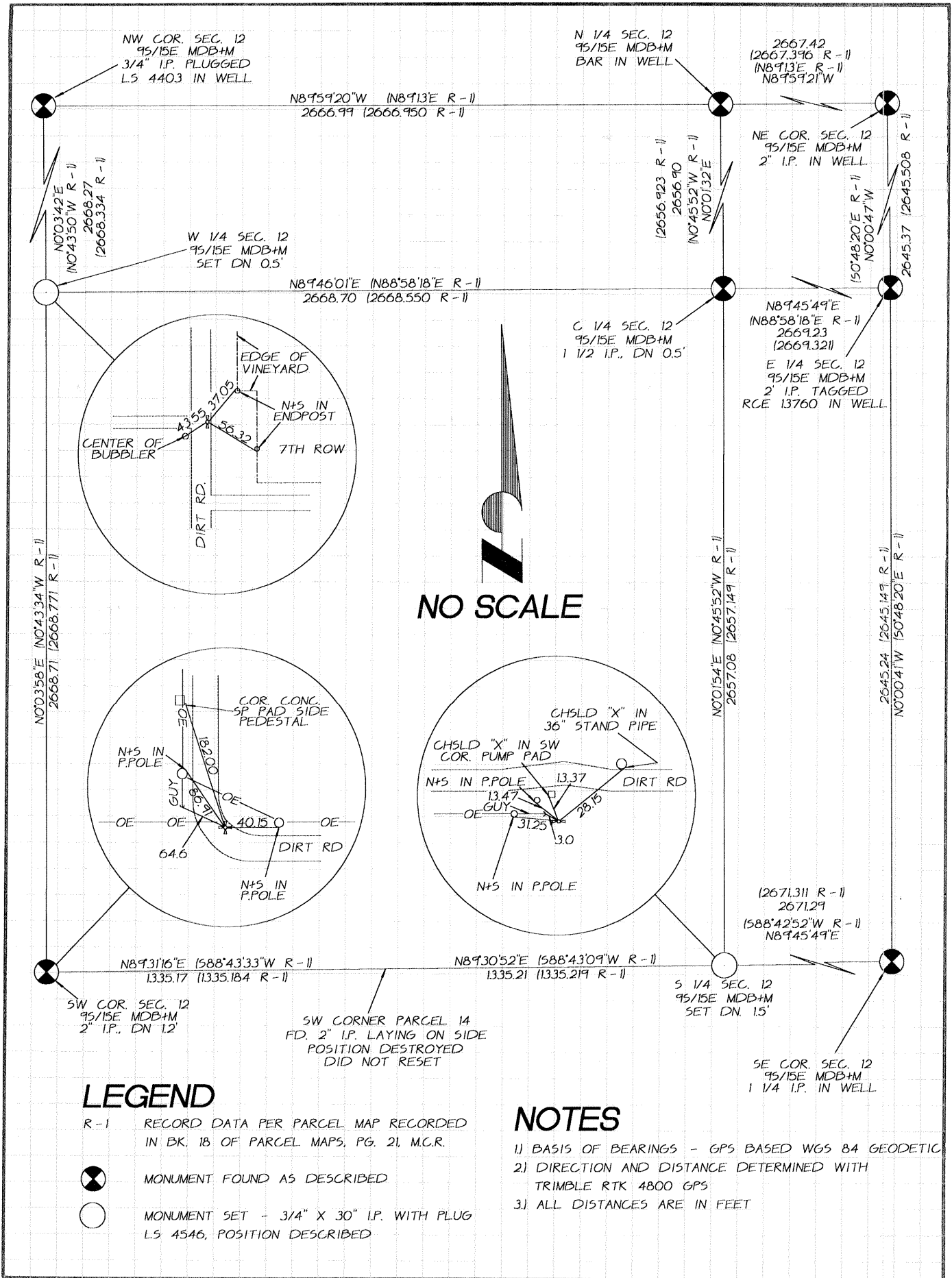


### COUNTY SURVEYOR'S STATEMENT

This Corner Record was received DECEMBER 19 98 and examined and filed DECEMBER 30 19 98.

Signed Roy Turney Title Dep Co. Svr.

County Surveyor's Comment \_\_\_\_\_



NO SCALE

**LEGEND**

- R-1 RECORD DATA PER PARCEL MAP RECORDED IN BK. 18 OF PARCEL MAPS, PG. 21, M.C.R.
- MONUMENT FOUND AS DESCRIBED
- MONUMENT SET - 3/4" X 30" I.P. WITH PLUG LS 4546, POSITION DESCRIBED

**NOTES**

- 1) BASIS OF BEARINGS - GPS BASED WGS 84 GEODETIC
- 2) DIRECTION AND DISTANCE DETERMINED WITH TRIMBLE RTK 4800 GPS
- 3) ALL DISTANCES ARE IN FEET