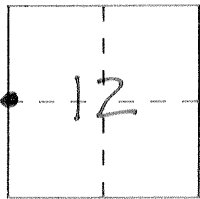


CORNER RECORD

Document Number # 3421

City of _____ County of MERCED, California

Brief Legal Description W 1/4 SEC 12 T9S RISE MDB: M



CORNER TYPE

Government Corner [X] Control []
Meander [] Property []
Rancho [] Other []
Date of Survey 21 DEC. 1998

COORDINATES (Optional)

N. _____
E. _____
Zone _____ Datum _____
Elev. _____

Corner — Left as found [] Found and tagged [] Established [] Reestablished [X] Rebuilt []

Identification and type of corner found: Evidence used to identify or procedure used to establish or reestablish the corner:

FOUND CORNER MISSING; RE-ESTABLISHED PER PARCEL MAP RECORDED IN VOLUME 18 OF PARCEL MAPS, PAGE 21, MERCED COUNTY RECORDS

ADDITIONAL INFO ON SKETCH FOR REMAINING CORNERS IN SEC. 12

A description of the physical condition of the monument as found and as set or reset:

SET 3/4" X 30" IRON PIPE WITH PLASTIC YELLOW PLUG STAMPED LS 4546; DOWN 0.5' ON EAST EDGE OF DIRT AG. ROAD

SURVEYOR'S STATEMENT

This Corner Record was prepared by me or under my direction in conformance with the Land Surveyors' Act on 12/22/98 19__.

Signed [Signature] L.S. or R.C.E. Number 4546



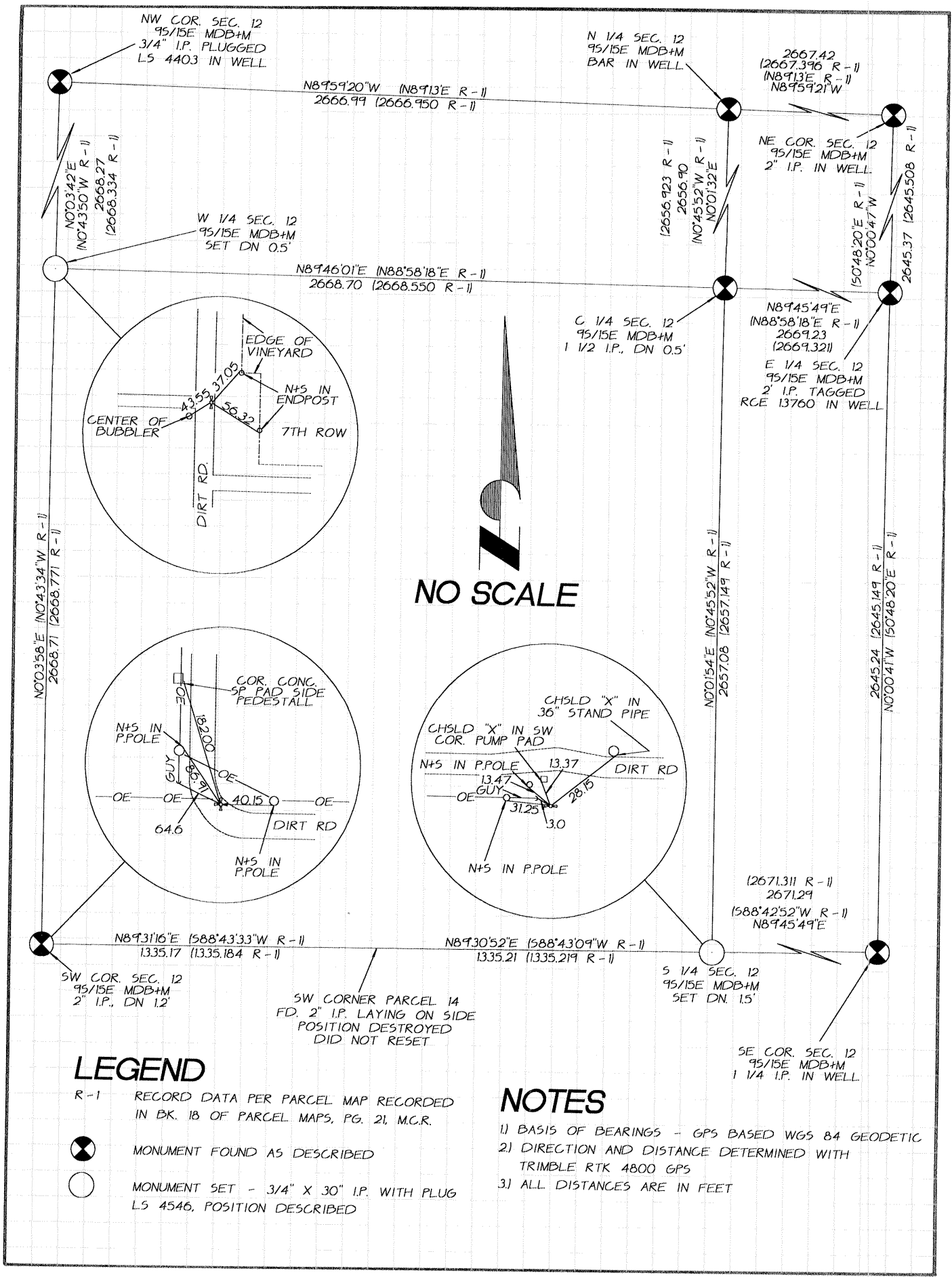
COUNTY SURVEYOR'S STATEMENT

This Corner Record was received DECEMBER 19 98 and examined and filed DECEMBER 30 19 98.

Signed [Signature] Title DESK CO SUR.



County Surveyor's Comment _____



NW COR. SEC. 12
95/15E MDB+M
3/4" I.P. PLUGGED
L5 4403 IN WELL

N 1/4 SEC. 12
95/15E MDB+M
BAR IN WELL

2667.42
(2667.396 R-1)
(N8913'E R-1)
N895921'W

N8959'20"W (N8913'E R-1)
2666.99 (2666.950 R-1)

N00342'E
N04350'W R-1
2668.27
(2668.334 R-1)

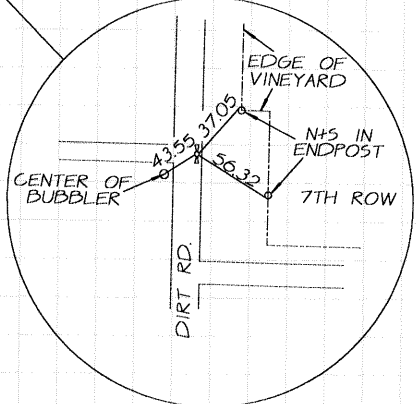
W 1/4 SEC. 12
95/15E MDB+M
SET DN 0.5'

(2656.923 R-1)
2656.90
N04552'W R-1
N00132'E

NE COR. SEC. 12
95/15E MDB+M
2" I.P. IN WELL

N894601'E (N8858'18"E R-1)
2668.70 (2668.550 R-1)

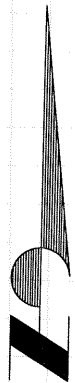
(5048'20"E R-1)
N00047'W
2645.37 (2645.508 R-1)



C 1/4 SEC. 12
95/15E MDB+M
1 1/2 I.P., DN 0.5'

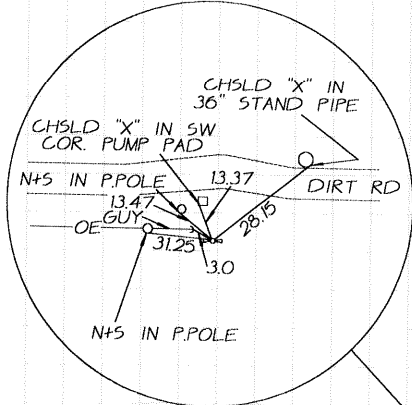
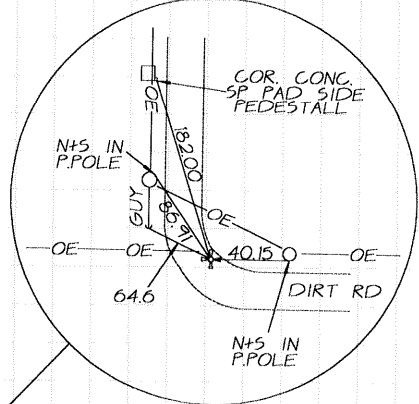
N8945'49"E
(N8858'18"E R-1)
2669.23
(2669.321)

E 1/4 SEC. 12
95/15E MDB+M
2" I.P. TAGGED
RCE 13760 IN WELL



NO SCALE

N00358'E (N04334'W R-1)
2668.71 (2668.771 R-1)



N00154'E (N04552'W R-1)
2657.08 (2657.149 R-1)

2645.24 (2645.149 R-1)
N00047'W (5048'20"E R-1)

N8931'16"E (588'43'33"W R-1)
1335.17 (1335.184 R-1)

N8930'52"E (588'43'09"W R-1)
1335.21 (1335.219 R-1)

(2671.311 R-1)
2671.29
(588'42'52"W R-1)
N8945'49"E

SW COR. SEC. 12
95/15E MDB+M
2" I.P., DN 1.2'

SW CORNER PARCEL 14
FD. 2" I.P. LAYING ON SIDE
POSITION DESTROYED
DID NOT RESET

S 1/4 SEC. 12
95/15E MDB+M
SET DN. 1.5'

SE COR. SEC. 12
95/15E MDB+M
1 1/4 I.P. IN WELL

LEGEND

- R-1 RECORD DATA PER PARCEL MAP RECORDED IN BK. 18 OF PARCEL MAPS, PG. 21, M.C.R.
- MONUMENT FOUND AS DESCRIBED
- MONUMENT SET - 3/4" X 30" I.P. WITH PLUG L5 4546, POSITION DESCRIBED

NOTES

- 1) BASIS OF BEARINGS - GPS BASED WGS 84 GEODETIC
- 2) DIRECTION AND DISTANCE DETERMINED WITH TRIMBLE RTK 4800 GPS
- 3) ALL DISTANCES ARE IN FEET