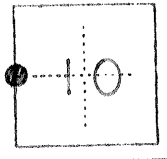


3419

CORNER RECORD

COUNTY OF Merced T 9 S R 15 E Mt. Diablo MERIDIAN CALIFORNIA
CORNER TYPE: GOV'T. CORNER MEANDER RANCHO CONTROL OTHER
CORNER IDENTIFICATION -- DATE OF VISIT June 19, 1980



West quarter corner, Section 10

CORNER -- LEFT AS FOUND FOUND AND TAGGED REESTABLISHED OBLITERATED CORNER REBUILT

PHYSICAL DESCRIPTION OF CORNER FOUND; EVIDENCE AND METHOD USED TO IDENTIFY OR REESTABLISH

1-1/2" steel axle @ 0.4 feet below ground line. Corner was destroyed in canal construction.

PHYSICAL DESCRIPTION OF MONUMENTS REBUILT OR PERPETUATED

Reset from swing ties. Set 1" O.D. pipe tagged R.C.E. 12700 @ 0.3 feet below ground line.

CALIFORNIA COORDINATE SYSTEM ORDER: FIRST SECOND THIRD
STATIONS USED: NGS (USC & GS) STATE COUNTY OTHER STATION _____ STATION _____
ZONE _____ ELEVATION _____ NORTHINGS (Y) _____ EASTINGS (X) _____

SKETCH: (include reference tie or witness points, remarks and topo of area)

- 9.29 West from nail & shiner in power pole.
- 44.25 Southeast from "X" on south side of 8" steel guard post.
- 44.71 Northeast from "X" on north side of 8" steel guard post.

SURVEYOR'S CERTIFICATE
THIS CORNER RECORD WAS PREPARED BY ME OR UNDER MY DIRECTION IN CONFORMANCE WITH THE LAND SURVEYORS ACT ON 29 June
SIGNED: Frank C. Stambaugh
L.S. or R.C.E. No.: 12700



COUNTY SURVEYOR'S CERTIFICATE
THE CORNER RECORD WAS RECEIVED _____ 19____
AND EXAMINED AND FILED _____ 19____
BY: _____
TITLE: _____
DOCUMENT No. 3419
STATEMENT ON BACK OF SHEET
YES NO