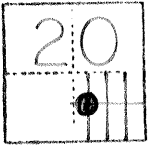


No. 3-16A

CORNER RECORD

COUNTY OF Merced T. 9S R. 15E M.D.B. MERIDIAN CALIFORNIA

CORNER TYPE: GOVT. CORNER [] MEANDER [] RANCHO [] CONTROL [] OTHER [X] Lot Corner
CORNER IDENTIFICATION — DATE OF VISIT January 22, 1976



Northwest corner of Lot 30, Block 20, (Section 20) as shown on the Map of the Bliss Ranch Subdivision on file in Volume 7 of plats at Page 45, M.C.R.

CORNER — LEFT AS FOUND [] FOUND AND TAGGED [X] REESTABLISHED OBLITERATED CORNER [] REBUILT []

PHYSICAL DESCRIPTION OF CORNER FOUND; EVIDENCE AND METHOD USED TO IDENTIFY OR REESTABLISH

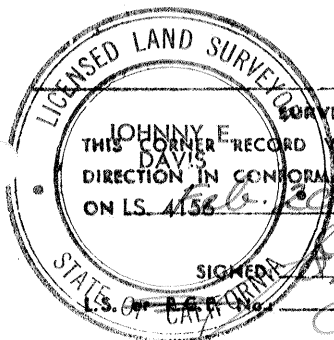
Found 4 x 6 redwood burned on top at ground level with 2 x 2 redwood 0.3 east
Set 60d nail in center with plug L.S. 4156

PHYSICAL DESCRIPTION OF MONUMENTS REBUILT OR PERPETUATED

CALIFORNIA COORDINATE SYSTEM ORDER: FIRST [] SECOND [] THIRD []
STATIONS USED: NG5 (USC & GS) [] STATE [] COUNTY [] OTHER [] STATION _____ STATION _____
ZONE _____ ELEVATION _____ NORTHINGS (Y) _____ EASTINGS (X) _____

SKETCH: (Include reference tie or witness points, remarks and topo of area)

100.61 Southwest of nail & shiner in corner rr tie post
95.49 Southwest of nail & shiner in corner rr tie post



SURVEYOR'S CERTIFICATE

THIS CORNER RECORD WAS PREPARED BY ME OR UNDER MY DIRECTION IN CONFORMANCE WITH THE LAND SURVEYORS ACT ON LS. 4156 1980

SIGNED

Handwritten signature of Johnny E. Davis

SEAL

COUNTY SURVEYOR'S CERTIFICATE

THE CORNER RECORD WAS RECEIVED Feb 25 1980 AND EXAMINED AND FILED

BY: Walter Mitchell

TITLE:

DOCUMENT No. 3416A

STATEMENT ON BACK OF SHEET

YES [] NO []