

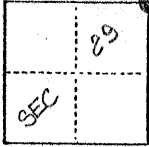
03415

CORNER RECORD

COUNTY OF MERCED T. 9 S R. 15 E M.D.B. 5 MERIDIAN CALIFORNIA

CORNER TYPE: GOV'T. CORNER MEANDER RANCHO CONTROL OTHER

CORNER IDENTIFICATION — DATE OF VISIT 3/27 19 75



NE. CORNER SECTION 29

CORNER — LEFT AS FOUND FOUND AND TAGGED REESTABLISHED OBLITERATED CORNER REBUILT

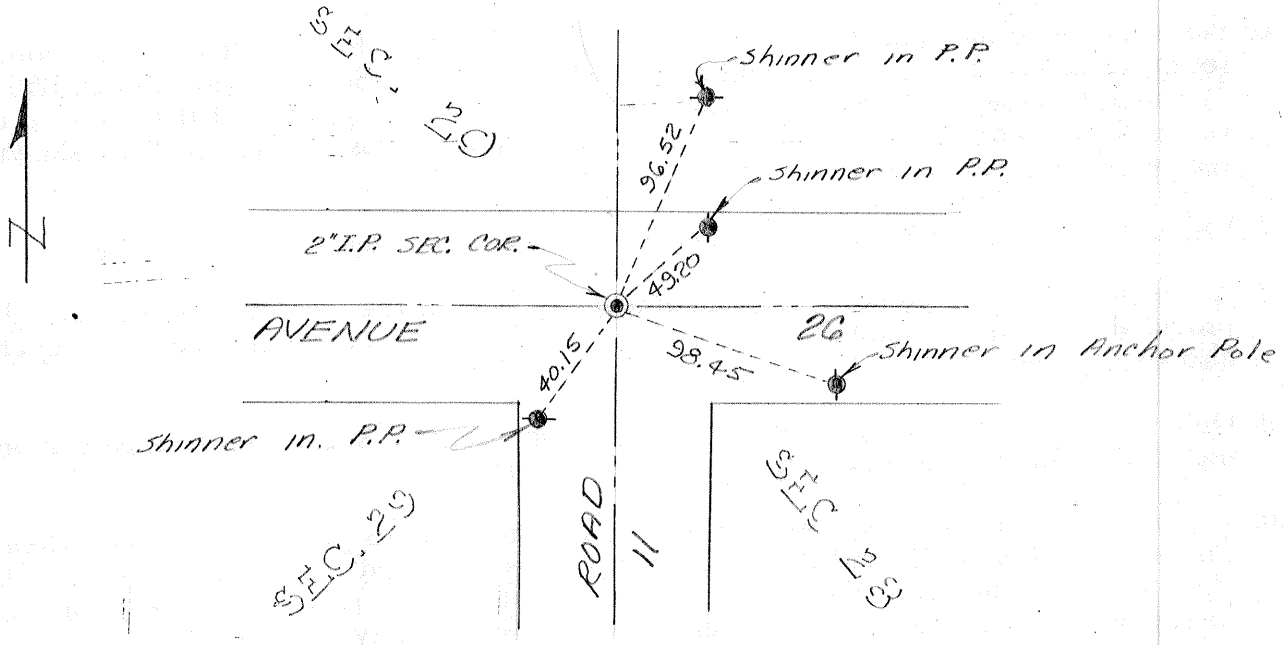
PHYSICAL DESCRIPTION OF CORNER FOUND; EVIDENCE AND METHOD USED TO IDENTIFY OR REESTABLISH
Found 1 1/2" Iron Pipe with Brass Cap in old Post, 2'-6" below the surface

PHYSICAL DESCRIPTION OF MONUMENTS REBUILT OR PERPETUATED
Set 2" Iron Pipe tagged R.C.E. No 13,760 over existing monument in Survey Encasement

CALIFORNIA COORDINATE SYSTEM ORDER: FIRST SECOND THIRD
STATIONS USED: NGS (USC & GS) STATE COUNTY OTHER STATION _____ STATION _____
ZONE _____ ELEVATION _____ NORTHINGS (Y) _____ EASTINGS (X) _____

(Fold)

SKETCH: (Include reference tie or witness points, remarks and topo of area)



SURVEYOR'S CERTIFICATE

THIS CORNER RECORD WAS PREPARED BY ME OR UNDER MY DIRECTION IN CONFORMANCE WITH THE LAND SURVEYORS ACT ON _____ 19____.

SIGNED: _____

L.S. or R.C.E. No.: _____

SEAL

COUNTY SURVEYOR'S CERTIFICATE

THE CORNER RECORD WAS RECEIVED _____ 19____ AND EXAMINED AND FILED _____ 19____.

BY: _____ TITLE: _____

DOCUMENT No. 3415

STATEMENT ON BACK OF SHEET

YES NO