

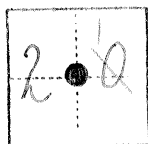
3412

CO RNER RECORD

COUNTY OF Merced T. 9 S R. 15 E Mt. Diablo MERIDIAN CALIFORNIA

CORNER TYPE: GOV'T. CORNER [] MEANDER [] RANCHO [] CONTROL [] OTHER [X]

CORNER IDENTIFICATION -- DATE OF VISIT May 26, 1976



Northwest Corner of Lot 20, Block 21 (Section 21) of the Bliss Ranch Subdivision on file in Volume 7 of plats at page 46 of the M.C.R.

CORNER -- LEFT AS FOUND [X] FOUND AND TAGGED [] REESTABLISHED OBLITERATED CORNER [] REBUILT []

PHYSICAL DESCRIPTION OF CORNER FOUND; EVIDENCE AND METHOD USED TO IDENTIFY OR REESTABLISH

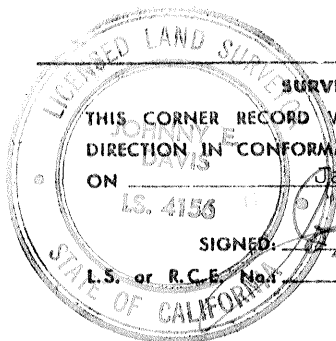
Found 4" x 4" redwood 0.8 below dirt road - 4" x 4" was broken off 18". Laid 4" x 4" remain's over remaining 4" x 4" redwood.

PHYSICAL DESCRIPTION OF MONUMENTS REBUILT OR PERPETUATED

CALIFORNIA COORDINATE SYSTEM ORDER: FIRST [] SECOND [] THIRD [] STATIONS USED: NGS (USC & GS) [] STATE [] COUNTY [] OTHER [] STATION STATION ZONE ELEVATION NORTHINGS (Y) EASTINGS (X)

SKETCH: (Include reference tie or witness points, remarks and topo of area)

- 36.42 Southeast from mark on gate valve.
58.4 Southeast from mark on gate valve.
25'± South from first grape row.



SURVEYOR'S CERTIFICATE

THIS CORNER RECORD WAS PREPARED BY ME OR, UNDER MY DIRECTION IN CONFORMANCE WITH THE LAND SURVEYORS ACT ON January 30, 1979

L.S. 4156

SIGNED: [Signature]

4156

L.S. or R.C.E. No.

SEAL

COUNTY SURVEYOR'S CERTIFICATE

THE CORNER RECORD WAS RECEIVED AND EXAMINED AND FILED 19

BY:

TITLE:

DOCUMENT No. 3412

STATEMENT ON BACK OF SHEET

YES [] NO []