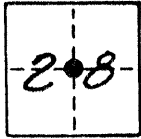


# CORNER RECORD

COUNTY OF Merced T. 9.S. R. 14E M.D.B.&M. MERIDIAN CALIFORNIA  
 CORNER TYPE: GOVT. CORNER  MEANDER  RANCHO  CONTROL  OTHER   
 CORNER IDENTIFICATION — DATE OF VISIT 3-21 1988



*Center 1/4 Corner, Section 28, 9/14*

*Southeast Corner Of The North Half Of Lot 7 Of The "Map Of Subdivision Of The Chowchilla Ranch", Volume 5, Page 31, Merced County Records.*

CORNER — LEFT AS FOUND  FOUND AND TAGGED  REESTABLISHED OBLITERATED CORNER  REBUILT

PHYSICAL DESCRIPTION OF CORNER FOUND; EVIDENCE AND METHOD USED TO IDENTIFY OR REESTABLISH

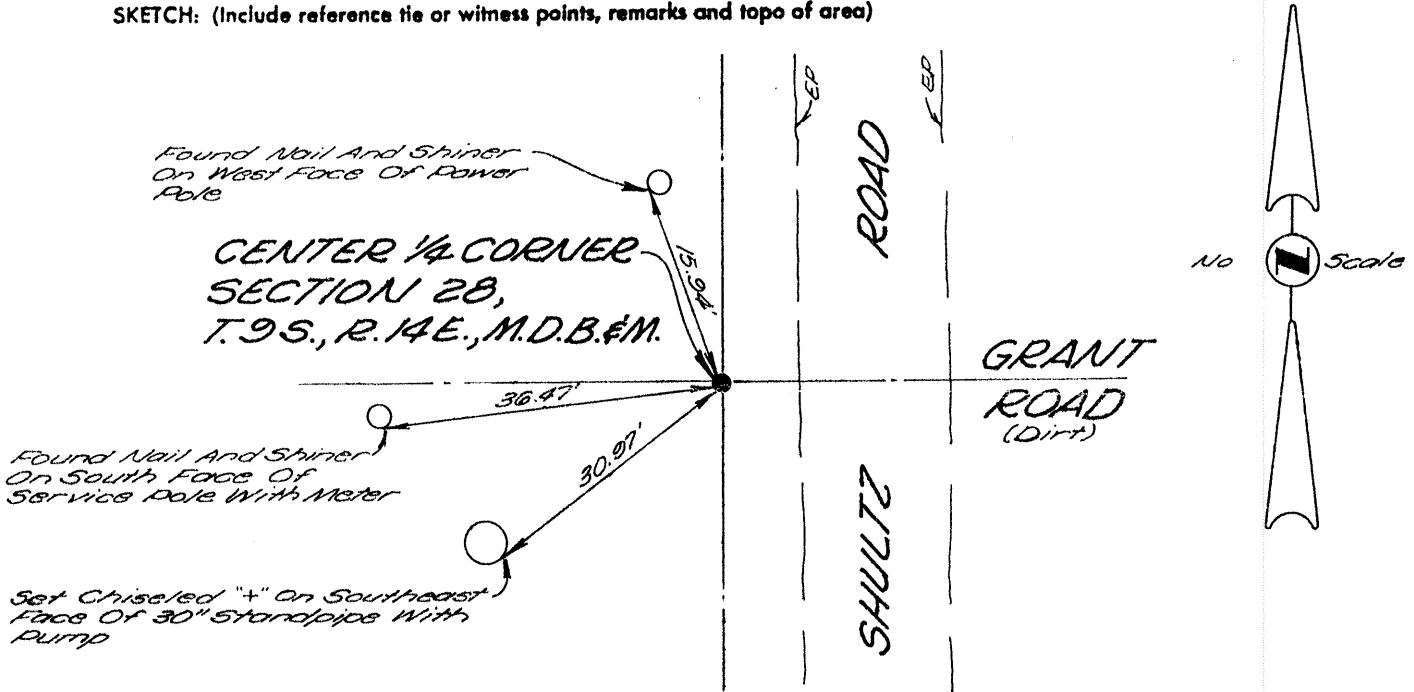
*Found Remains Of 3/4" Iron Pipe With Traces Of Redwood, 30" Below.*

PHYSICAL DESCRIPTION OF MONUMENTS REBUILT OR PERPETUATED

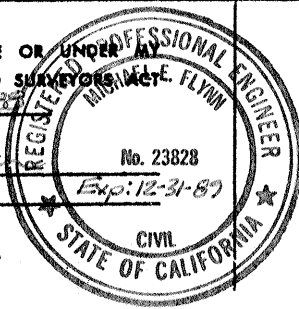
*Set 3/4" Iron Pipe, 30" Long, Tagged R.C.E. 23828, 6" Below*

CALIFORNIA COORDINATE SYSTEM ORDER: FIRST  SECOND  THIRD   
 STATIONS USED: NGS (USC & GS)  STATE  COUNTY  OTHER  STATION \_\_\_\_\_ STATION \_\_\_\_\_  
 ZONE \_\_\_\_\_ ELEVATION \_\_\_\_\_ NORTHINGS (Y) \_\_\_\_\_ EASTINGS (X) \_\_\_\_\_

SKETCH: (Include reference tie or witness points, remarks and topo of area)



**SURVEYOR'S CERTIFICATE**  
 THIS CORNER RECORD WAS PREPARED BY ME OR UNDER MY DIRECTION IN CONFORMANCE WITH THE LAND SURVEYORS ACT ON MARCH 21 1988  
 SIGNED: Michael E. Flynn  
 L.S. or R.C.E. No.: 23828



**COUNTY SURVEYOR'S CERTIFICATE**  
 THE CORNER RECORD WAS RECEIVED April 16 1988 AND EXAMINED AND FILED APRIL 20 1988  
 BY: Roger J. ...  
 TITLE: Deputy County Surveyor  
 DOCUMENT No. 3391

STATEMENT ON BACK OF SHEET YES  NO