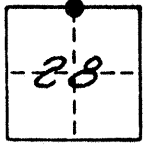


CORNER RECORD

COUNTY OF Merced T. 9 S. R. 14 E. M.D.B. & M. MERIDIAN CALIFORNIA
 CORNER TYPE: GOVT. CORNER MEANDER RANCHO CONTROL OTHER
 CORNER IDENTIFICATION — DATE OF VISIT 3-21 1988



North 1/4 Corner, Section 28, 9/14
 Northeast Corner Of Lot 7 Of The "Map Of Subdivision Of The Chowchilla Ranch", Volume 5, Page 31, Merced County Records.

CORNER — LEFT AS FOUND FOUND AND TAGGED REESTABLISHED OBLITERATED CORNER RESULT

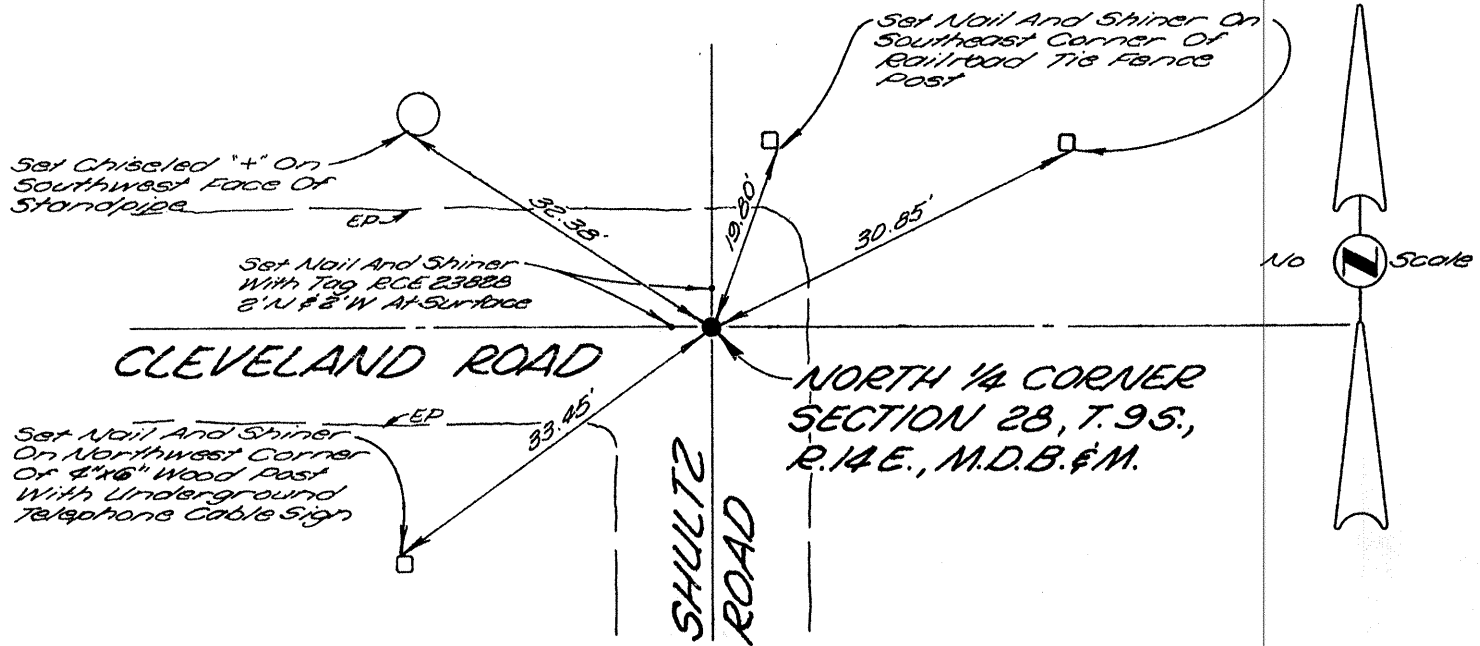
PHYSICAL DESCRIPTION OF CORNER FOUND; EVIDENCE AND METHOD USED TO IDENTIFY OR REESTABLISH

*Found 1 1/4" Iron Pipe Open, Inside 3" Iron Pipe, 11" Below.
 Set Tag R.C.E. 23828.*

PHYSICAL DESCRIPTION OF MONUMENTS REBUILT OR PERPETUATED

CALIFORNIA COORDINATE SYSTEM ORDER: FIRST SECOND THIRD
 STATIONS USED: NGS (USC & GS) STATE COUNTY OTHER STATION _____ STATION _____
 ZONE _____ ELEVATION _____ NORTHINGS (Y) _____ EASTINGS (X) _____

SKETCH: (Include reference tie or witness points, remarks and topo of area)



SURVEYOR'S CERTIFICATE

THIS CORNER RECORD WAS PREPARED BY ME OR UNDER MY DIRECTION IN CONFORMANCE WITH THE LAND SURVEYORS ACT ON MARCH 21 1988

SIGNED: Michael E. Hymowitz No. 23828 Exp 12-31-89

T.S. or R.C.E. No. 23828

SEAL
 STATE OF CALIFORNIA
 CIVIL ENGINEER

COUNTY SURVEYOR'S CERTIFICATE

THE CORNER RECORD WAS RECEIVED April 16 1988 AND EXAMINED AND FILED APRIL 20 1988

BY: Kay Titmusk
 TITLE: Deputy County Surveyor

DOCUMENT No. 3383

STATEMENT ON BACK OF SHEET YES NO