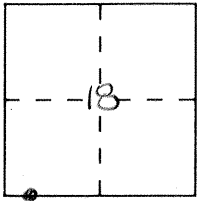


CORNER RECORD

Document Number 3364L

City of \_\_\_\_\_ County of Merced, California

Brief Legal Description E Turner Island Road



9/12

CORNER TYPE

- Government Corner
- Meander
- Rancho
- Date of Survey 8-27-92
- Control
- Property
- Other

COORDINATES (Optional)

N. \_\_\_\_\_  
 E. \_\_\_\_\_  
 Zone \_\_\_\_\_ Datum \_\_\_\_\_  
 Elev. \_\_\_\_\_

Corner — Left as found  Found and tagged  Established  Reestablished  Rebuilt

Identification and type of corner found: Evidence used to identify or procedure used to establish or reestablish the corner:

A description of the physical condition of the monument as found and as set or reset:

Fd. 3/8" Iron rod in monument box.

OK. B-30-93

F.B. 658-32

SURVEYOR'S STATEMENT

This Corner Record was prepared by me or under my direction in conformance with the Land Surveyors' Act on Sept. 7 1993.

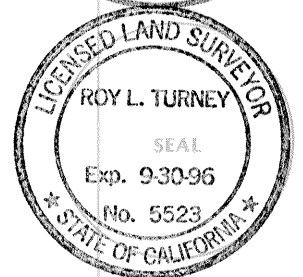
Signed [Signature] L.S. or R.C.E. Number \_\_\_\_\_



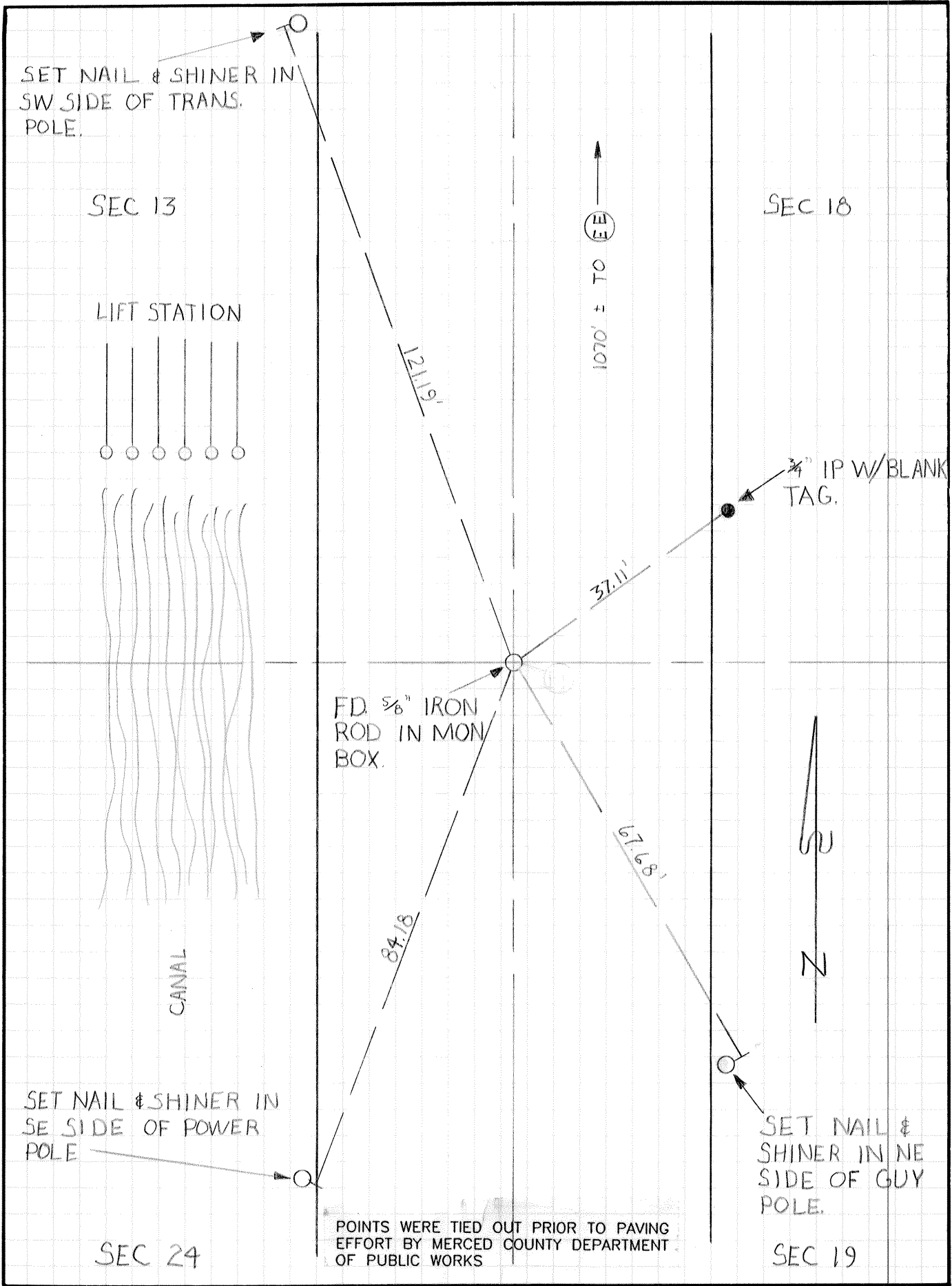
COUNTY SURVEYOR'S STATEMENT

This Corner Record was received SEPT 1993 and examined and filed SEPT. 16, 1993.

Signed [Signature] Title DEP. CO. SUR.



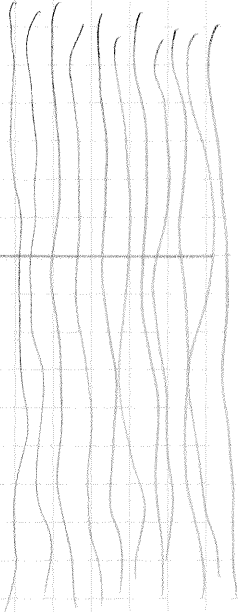
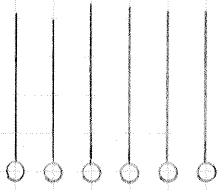
County Surveyor's Comment \_\_\_\_\_



SET NAIL & SHINER IN SW SIDE OF TRANS. POLE.

SEC 13

LIFT STATION



CANAL

FD. 5/8" IRON ROD IN MON BOX.

1070' ± TO

SEC 18

3/4" IP W/BLANK TAG.

37.11'

67.68'



SET NAIL & SHINER IN SE SIDE OF POWER POLE

SEC 24

POINTS WERE TIED OUT PRIOR TO PAVING EFFORT BY MERCED COUNTY DEPARTMENT OF PUBLIC WORKS

SET NAIL & SHINER IN NE SIDE OF GUY POLE.

SEC 19