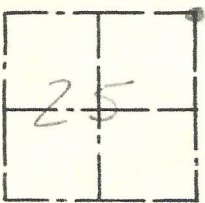
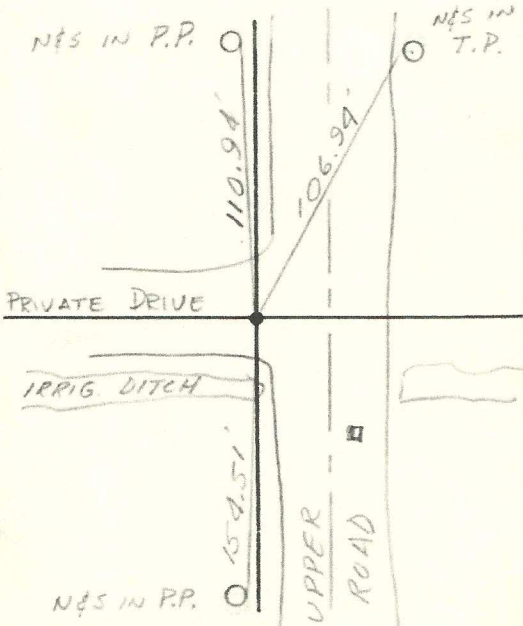


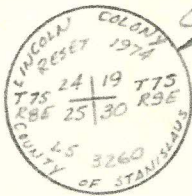
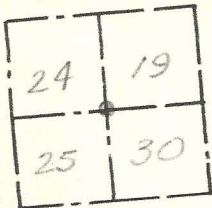
T. 7	S. 5	R. 8	E. 1	Sec. 25	Date 6-11-74	By J.A.E.V.D.
Mon. 6" CONC. MON. WITH 1" BOLT 18" DEEP					Firm: S.C.D.P.W.	



② NAIL & SHINERS
NE & SE



1102-25



CAP READS



③ SPIKE & SHINERS
NE & SE

T. 7 S. R. 819 E.

Mon. 2" I.P. with BRASS CAP in Mon. Well
Sec. 19.24.2530
18" DEEP

Date 6-11-74
Firm: S.C.D.P.W.

By J.D. E.V.D.

N&S IN R.P.

N&S IN T.P.

UPPER ROAD

PRIVATE DRIVE

6" CONC. W/ MON. & 1" BOLT

IRRIG. DITCH

N&S IN R.P.

1102-25