

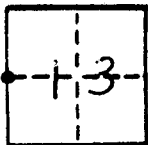
# CORNER RECORD

L. GORMAN  
R. NANTU

COUNTY OF FRESNO T. 11 S R. 12 E MD BASE & MERIDIAN CALIFORNIA

CORNER TYPE: GOVT. CORNER  MEANDER  RANCHO  CONTROL  OTHER

CORNER IDENTIFICATION - DATE OF VISIT 23 APRIL 1982



W 1/4 COR SEC. 13 11/12  
LUX ALIGN & MILLUX AVE

CORNER - LEFT AS FOUND  FOUND AND TAGGED  REESTABLISHED OBLITERATED CORNER  RESULT

PHYSICAL DESCRIPTION OF CORNER FOUND; EVIDENCE AND METHOD USED TO IDENTIFY OR REESTABLISH

FOUND REDWOOD 4x4 14" DOWN USING 1964 TIES BY LATHY

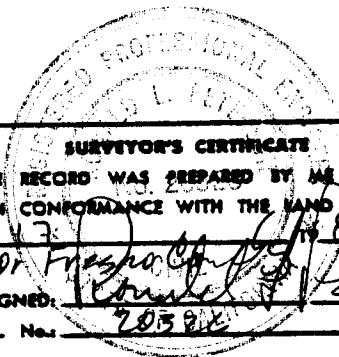
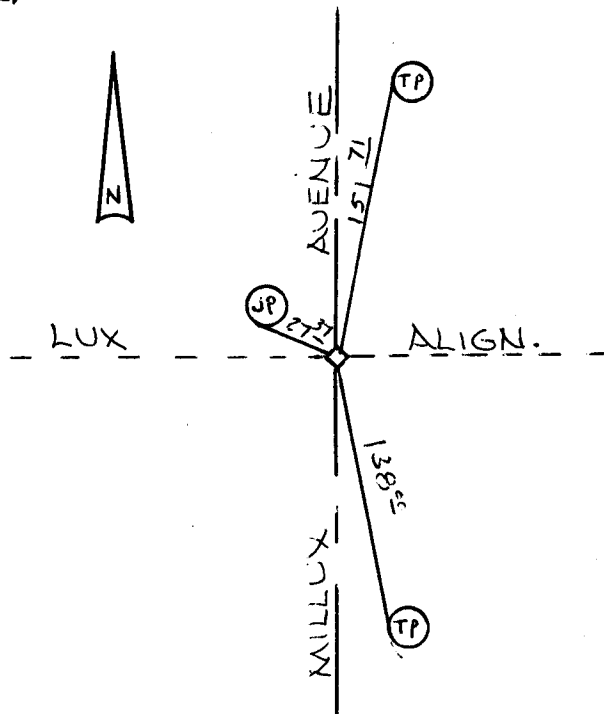
PHYSICAL DESCRIPTION OF MONUMENTS RESULT OR PERPETUATED

TAGGED "RCE 20326", SET 2' SPREADERS SOUTH & WEST, TIED AS BELOW &  
SET RED HEAD SPIKE FLUSH WITH ROAD SURFACE.

CALIFORNIA COORDINATE SYSTEM ORDER: FIRST  SECOND  THIRD   
STATIONS USED: NGS (USC & GS)  STATE  COUNTY  OTHER  STATION \_\_\_\_\_ STATION \_\_\_\_\_  
ZONE \_\_\_\_\_ ELEVATION \_\_\_\_\_ NORTHINGS (Y) \_\_\_\_\_ EASTINGS (X) \_\_\_\_\_

SKETCH: (Include reference tie or witness points, remarks and topo of area)

- 151 <sup>71</sup> SW. OF O IN T.P.
- 27 <sup>37</sup> S.E. OF O IN J.P.
- 138 <sup>60</sup> N.W. OF O IN T.P.
- 4° S OF PL W. EXCEPTING 1ST POLE
- 27° E OF PL S. EXCEPTING 1ST POLE
- 21° W OF PL N.



**SURVEYOR'S CERTIFICATE**  
THIS CORNER RECORD WAS PREPARED BY ME OR UNDER MY DIRECTION IN CONFORMANCE WITH THE LAND SURVEYORS ACT ON Feb 17 1983  
for Fresno County  
SIGNED: [Signature]  
R.C.E. No. 20326

**COUNTY SURVEYOR'S CERTIFICATE**  
THE CORNER RECORD WAS RECEIVED APRIL 19 1983  
AND EXAMINED AND FILED MAY 12 1983  
BY [Signature]  
TITLE: VSE  
DOCUMENT No. 2986  
STATEMENT ON BACK OF SHEET YES  NO