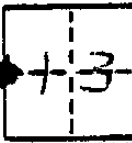


CORNER RECORD

COUNTY OF FRESNO T. 11S R. 12E MDA # MERICAN CALIFORNIA
 CORNER TYPE GOVT. CORNER MEASURE LANCING CONTROL OTHER
 CORNER IDENTIFICATION - DATE OF VISIT NOV. 6 1984



1/4 COR SEC 13-11/12
MILLUX AVE & LUX ALIGN

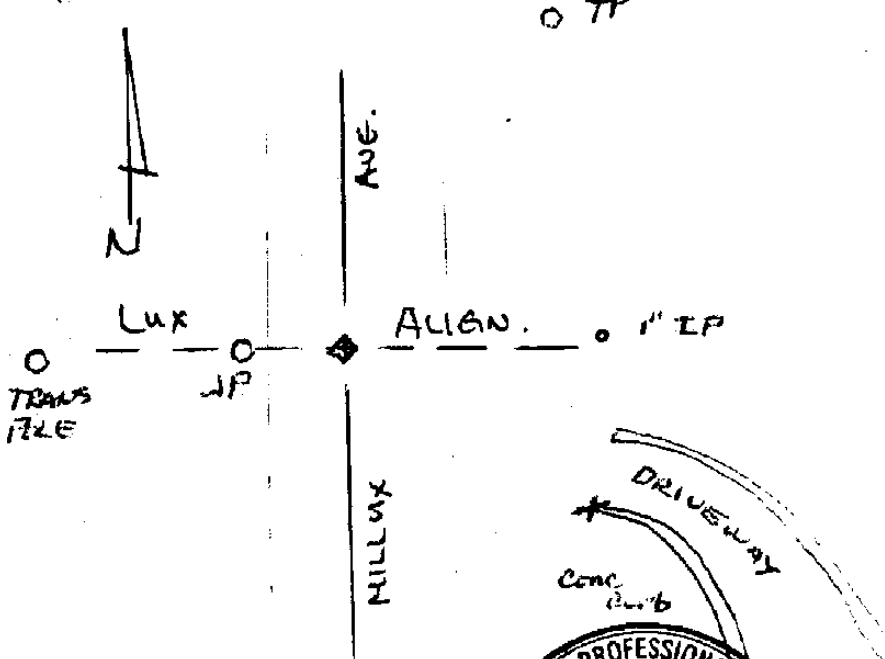
CORNER - LEFT AS FOUND FOUND AND TAGGED REESTABLISHED OBLITERATED CORNER RESULT

PHYSICAL DESCRIPTION OF CORNER FOUND: EVIDENCE AND METHOD USED TO IDENTIFY OR REESTABLISH
Found 3x3 HUB with tag stamped 20326. Using Fresno COUNTY TIES of Record. Set 5/8" x 24" Through center of 3x3 hub. Set plastic cap on rebar stamped RCE 12769 3" UNDER PAVEMENT 3x3 HUB IS 17" UNDER PAVEMENT

PHYSICAL DESCRIPTION OF MONUMENTS RESULT OR PERPETUATED
* TIES OF RECORD PER CR. # 2986

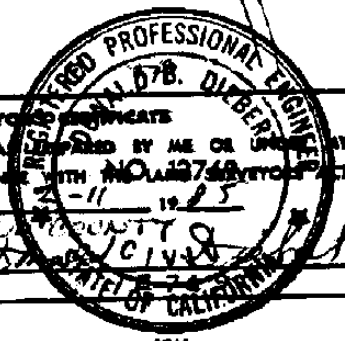
CALIFORNIA COORDINATE SYSTEM ORDER FIRST SECOND THIRD
 STATIONS USED: NGS (USC & GS) STATE COUNTY OTHER STATION _____ STATION _____
 ZONE _____ ELEVATION _____ NORTHINGS (N) _____ EASTINGS (E) _____

SKETCH: (Include reference tie or witness points, remarks and topo of area)



- 138.09 NW of \odot in TP
- 52.38 NW of "X" in Conc. Curb
- 30.19 W of 1" IP
- 27.38 E of JP
- 79.19 E of TRANS. POLE
- 152.18 SE of TP
- 4.0 S of PL W SKIP 1ST pole
- 27.8 E of PL S SKIP 1ST pole

SURVEYOR'S CERTIFICATE
 THIS CORNER RECORD WAS PREPARED BY ME OR UNDER MY DIRECT supervision IN CONFORMANCE WITH CALIFORNIA LAWS AND REGULATIONS ON _____
 FOR FRESNO COUNTY
 SIGNED: [Signature]
 R.C.E. No. _____
 SEAL



COUNTY SURVEYOR'S CERTIFICATE
 THE CORNER RECORD WAS RECEIVED FEB. 13 1985
 AND EXAMINED AND FILED APRIL 1985
 BY: [Signature]
 TITLE: [Signature]
 DOCUMENT No. 3314
 STATEMENT ON BACK OF SHEET YES NO