

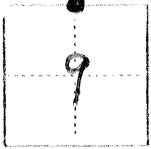
3317

CORNER RECORD

COUNTY OF Merced T. T8S R. R9E Mt. Diablo MERIDIAN CALIFORNIA

CORNER TYPE: GOV'T. CORNER MEANDER RANCHO CONTROL OTHER

CORNER IDENTIFICATION — DATE OF VISIT April 8, 1979



CORNER — LEFT AS FOUND FOUND AND TAGGED REESTABLISHED OBLITERATED CORNER REBUILT

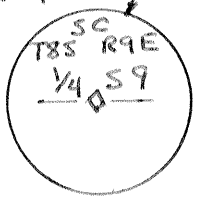
PHYSICAL DESCRIPTION OF CORNER FOUND; EVIDENCE AND METHOD USED TO IDENTIFY OR REESTABLISH

Found 4"x6" Rwd. post with spike (good condition) - 2.2' below road surface, as per Parcel Maps recorded Merced County Recorders in Vol. 1, Pg. 20 & Vol. 6, Pg. 9

PHYSICAL DESCRIPTION OF MONUMENTS REBUILT OR PERPETUATED

Set 1 1/2" I.D. 1/4" cap x 2.1' galv. pipe over the top of the fnd. 4"x6" Rwd post. Concrete backfill placed around pipe. Pipe cap - 0.1' below road surface

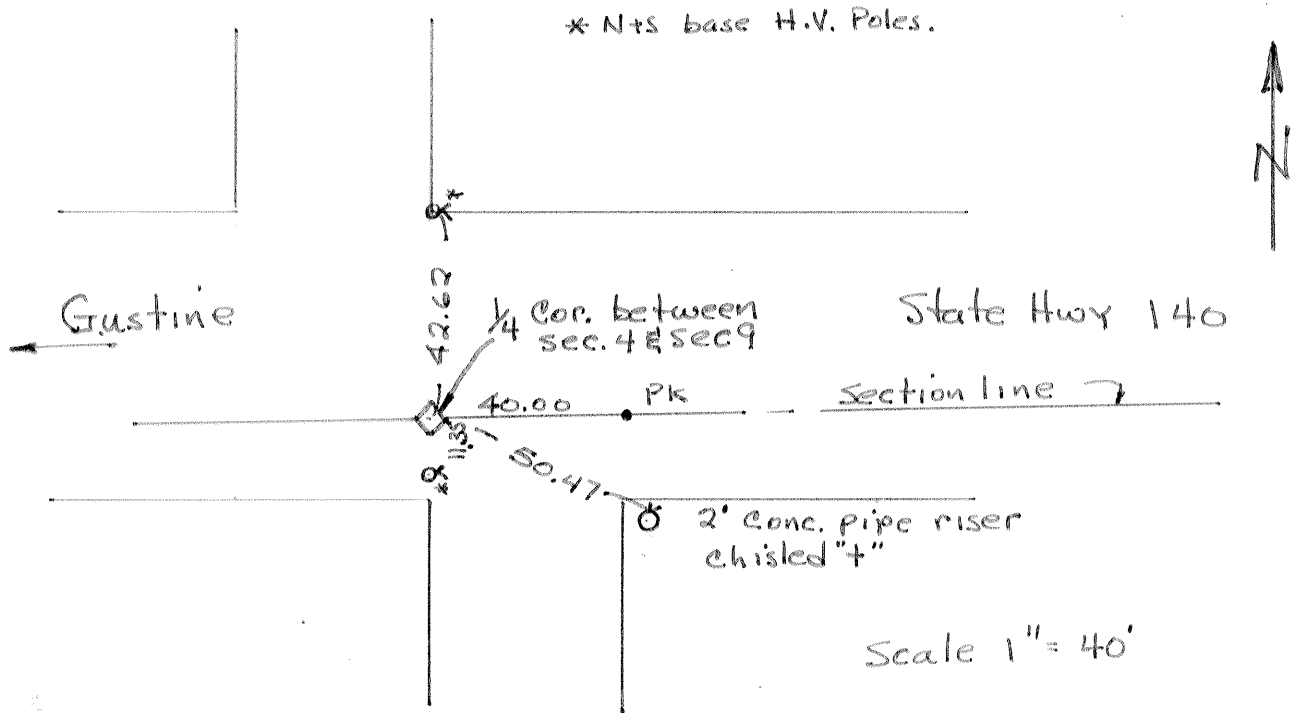
Cap stamped



CALIFORNIA COORDINATE SYSTEM ORDER: FIRST SECOND THIRD
STATIONS USED: NGS (USC & GS) STATE COUNTY OTHER STATION _____ STATION _____
ELEVATION _____ NORTHINGS (Y) _____ EASTINGS (X) _____

(Fold)

SKETCH: (Include reference tie or witness points, remarks and topo of area)



SURVEYOR'S CERTIFICATE

THIS CORNER RECORD WAS PREPARED BY ME OR UNDER MY DIRECTION IN CONFORMANCE WITH THE LAND SURVEY ACT
On April 16, 1979

SIGNED: John Coplantz

L.S. or P.C. No. 3664



COUNTY SURVEYOR'S CERTIFICATE

THE CORNER RECORD WAS RECEIVED _____ 19__

AND EXAMINED AND FILED _____ 19__

BY: _____

TITLE: _____

DOCUMENT No. 3317

STATEMENT ON BACK OF SHEET

YES NO