

3301

(For County Use Only)

CORNER RECORD

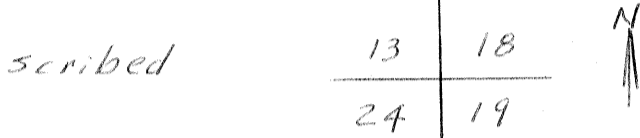
COUNTY OF MERCED T. 7 S R. 10 E M.D.B. & M. MERIDIAN CALIFORNIA
 CORNER TYPE: GOV'T. CORNER MEANDER RANCHO CONTROL OTHER
 CORNER IDENTIFICATION -- DATE OF VISIT 10-20-1977



CORNER -- LEFT AS FOUND FOUND AND TAGGED REESTABLISHED OBLITERATED CORNER REBUILT

PHYSICAL DESCRIPTION OF CORNER FOUND; EVIDENCE AND METHOD USED TO IDENTIFY OR REESTABLISH

Fd. 2" I.P. with a 2 1/2" Government Brass Cap

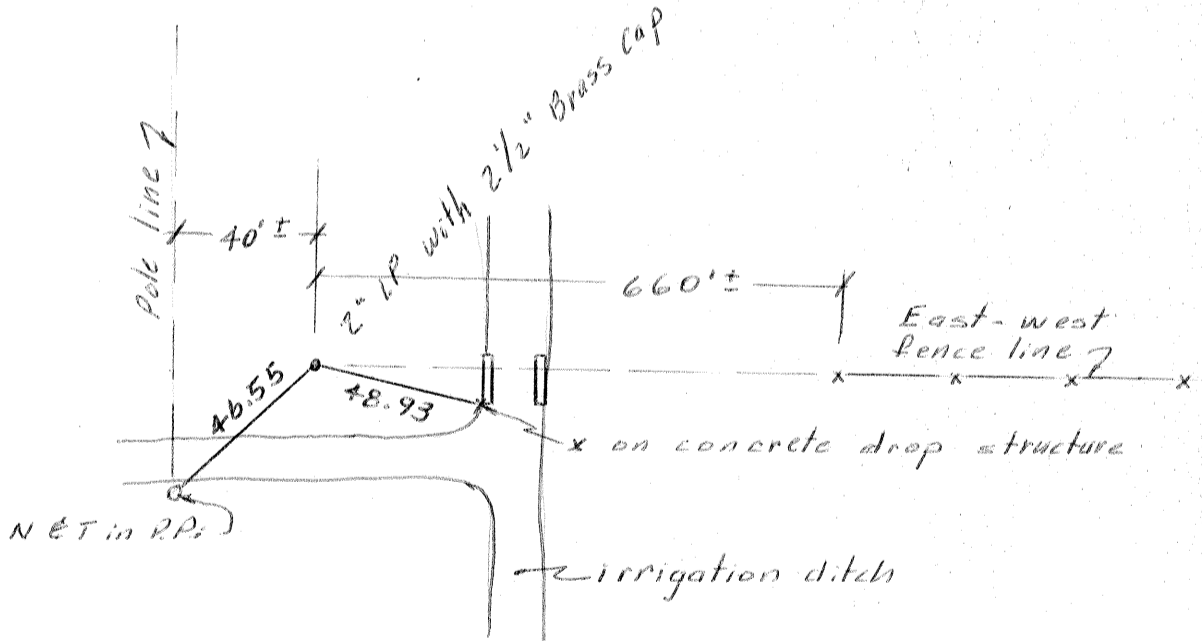


PHYSICAL DESCRIPTION OF MONUMENTS REBUILT OR PERPETUATED

CALIFORNIA COORDINATE SYSTEM ORDER: FIRST SECOND THIRD
 STATIONS USED: NGS (USC & GS) STATE COUNTY OTHER STATION _____ STATION _____
 ZONE _____ ELEVATION _____ NORTHINGS (Y) _____ EASTINGS (X) _____

(Fold)

SKETCH: (Include reference tie or witness points, remarks and topo of area)



SURVEYOR'S CERTIFICATE

THIS CORNER RECORD WAS PREPARED BY ME OR UNDER MY DIRECTION IN CONFORMANCE WITH THE LAND SURVEYORS ACT ON 10-20-1977

SIGNED: *James W. Tolla*

LS or R.C.E. No. 10990



COUNTY SURVEYOR'S CERTIFICATE

THE CORNER RECORD WAS RECEIVED _____ 19____ AND EXAMINED AND FILED _____ 19____

BY: _____

TITLE: _____

DOCUMENT No. 3301

STATEMENT ON BACK OF SHEET

YES NO