

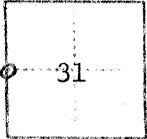
NO. 3279

CORNER RECORD

COUNTY OF Merced T. 9S R. 14E MDB MERIDIAN CALIFORNIA

CORNER TYPE: GOV'T. CORNER MEANDER RANCHO CONTROL OTHER

CORNER IDENTIFICATION — DATE OF VISIT 6-12 19 75



NO 3279

CORNER — LEFT AS FOUND FOUND AND TAGGED REESTABLISHED OBLITERATED CORNER REBUILT

PHYSICAL DESCRIPTION OF CORNER FOUND; EVIDENCE AND METHOD USED TO IDENTIFY OR REESTABLISH

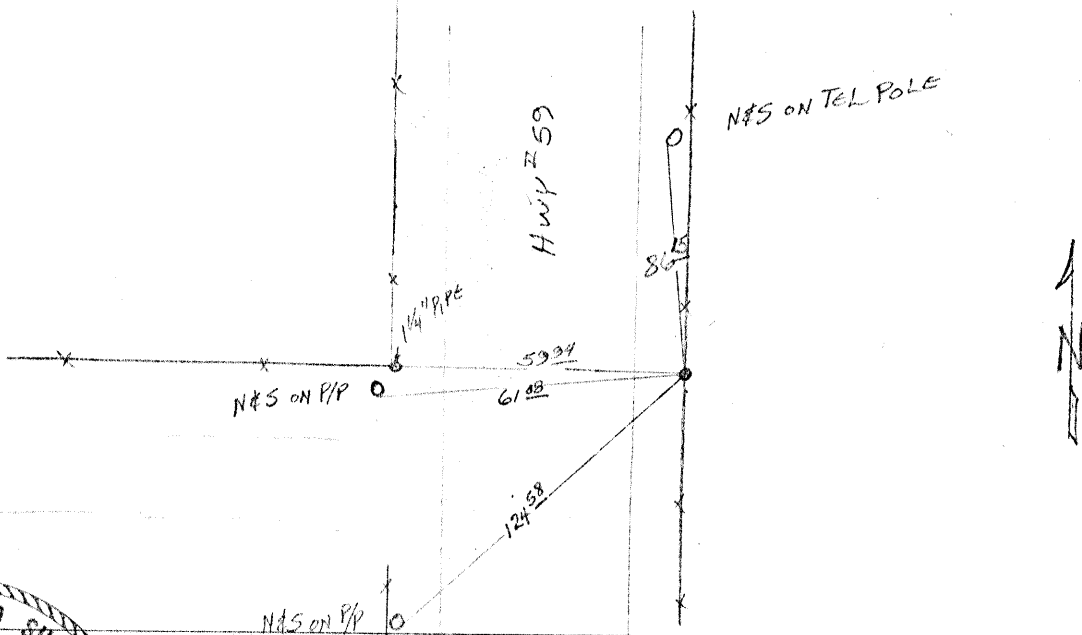
3/4" iron pipe in old RW buried 1 1/2" in fence line along east line of State Hwy. 59.

Corner located by PG&E survey but not verified.

PHYSICAL DESCRIPTION OF MONUMENTS REBUILT OR PERPETUATED

CALIFORNIA COORDINATE SYSTEM ORDER: FIRST SECOND THIRD STATIONS USED: NGS (USC & GS) STATE COUNTY OTHER STATION _____ STATION _____ ZONE _____ ELEVATION _____ NORTHINGS (Y) _____ EASTINGS (X) _____

Include reference to or witness points, remarks and top of area



LICENSED LAND SURVEYOR'S CERTIFICATE
THIS CORNER RECORD WAS PREPARED BY ME OR UNDER MY DIRECTION IN CONFORMANCE WITH THE LAND SURVEYORS ACT ON _____ 19 75
SIGNER: [Signature] LS 3613

COUNTY SURVEYOR'S CERTIFICATE
THE CORNER RECORD WAS RECEIVED _____ 19 _____ AND EXAMINED AND FILED _____ 19 _____ BY: _____ TITLE: _____ DOCUMENT No. 3279

STATEMENT ON BACK OF SHEET YES NO

SEAL