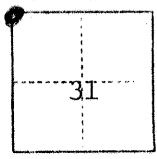


327

CORNER RECORD

COUNTY OF Merced T. 9S R. 14E M.D.B. _____ MERIDIAN CALIFORNIA

CORNER TYPE: GOV'T. CORNER MEANDER RANCHO CONTROL OTHER
CORNER IDENTIFICATION — DATE OF VISIT 6-11 1975



NR 3275

CORNER — LEFT AS FOUND FOUND AND TAGGED REESTABLISHED OBLITERATED CORNER REBUILT

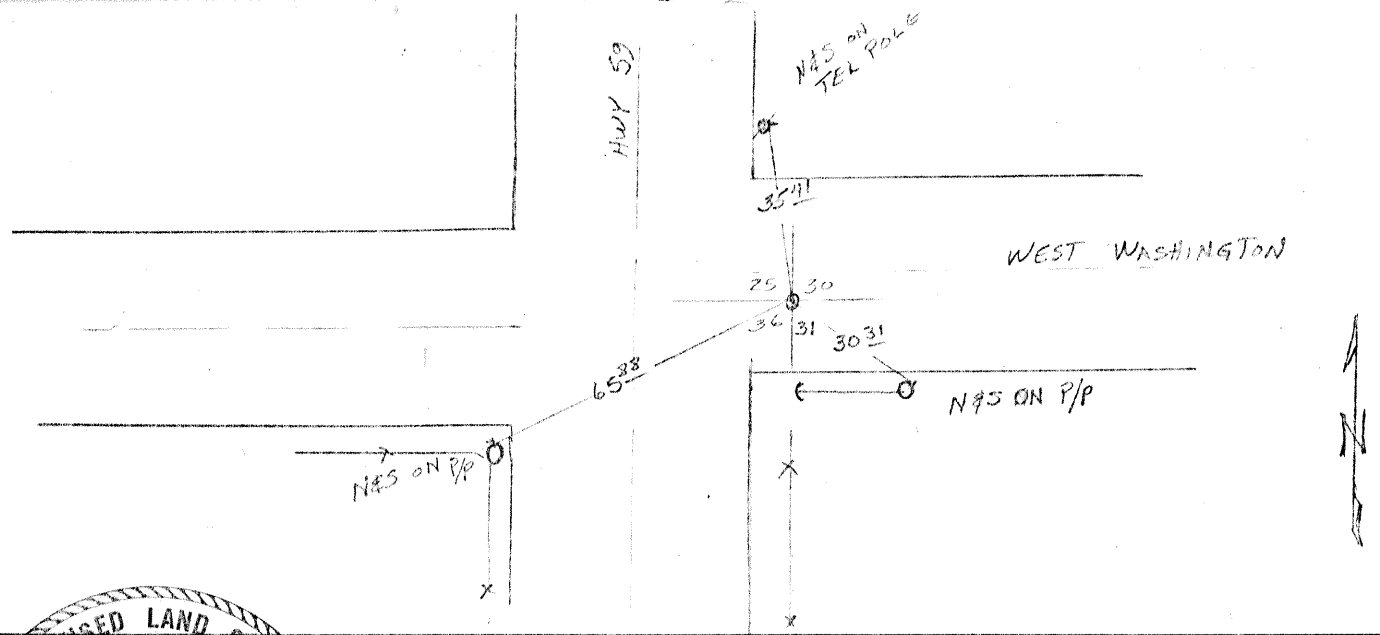
PHYSICAL DESCRIPTION OF CORNER FOUND; EVIDENCE AND METHOD USED TO IDENTIFY OR REESTABLISH

1/2" rod @ surface in 1-1/4" pipe down 0⁵ on projection of fence line along ease line of state hwy. 59.

Corner located by PG&E survey but not verified.

PHYSICAL DESCRIPTION OF MONUMENTS REBUILT OR PERPETUATED

CALIFORNIA COORDINATE SYSTEM ORDER: FIRST SECOND THIRD
STATIONS USED: NGS (USC & GS) STATE COUNTY OTHER STATION _____ STATION _____
ZONE _____ ELEVATION _____ NORTHINGS (Y) _____ EASTINGS (X) _____



LICENSED LAND SURVEYOR'S CERTIFICATE
 THIS CORNER RECORD WAS PREPARED BY ME OR UNDER MY DIRECTION IN CONFORMANCE WITH THE LAND SURVEYORS ACT ON _____ 1975
 SIGNATURE: *[Signature]*
 L.S. No. 3613

COUNTY SURVEYOR'S CERTIFICATE
 THE CORNER RECORD WAS RECEIVED _____ 19____
 AND EXAMINED AND FILED _____ 19____
 BY: _____
 TITLE: _____
 DOCUMENT No. 3275
 STATEMENT ON BACK OF SHEET YES NO