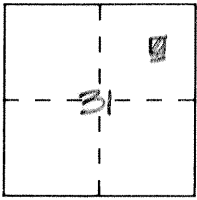


**CORNER RECORD**

Document Number 3242 T

City of \_\_\_\_\_ County of MERCED, California

Brief Legal Description LOT 6, MAP OF SANTANELLA PLAZA 44 OP 2



9/9

**CORNER TYPE**

Government Corner  Control   
Meander  Property   
Rancho  Other   
Date of Survey 1-23-01

**COORDINATES (Optional)**

N. \_\_\_\_\_  
E. \_\_\_\_\_  
Zone \_\_\_\_\_ Datum \_\_\_\_\_  
Elev. \_\_\_\_\_

Corner — Left as found  Found and tagged  Established  Reestablished  Rebuilt

Identification and type of corner found: Evidence used to identify or procedure used to establish or reestablish the corner:

See back

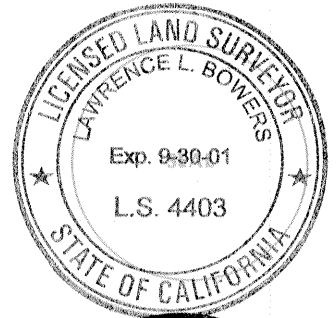
A description of the physical condition of the monument as found and as set or reset:

See back

**SURVEYOR'S STATEMENT**

This Corner Record was prepared by me or under my direction in conformance with the Land Surveyors' Act on 02-07 2001

Signed [Signature] L.S. or R.C.E. Number \_\_\_\_\_



**COUNTY SURVEYOR'S STATEMENT**

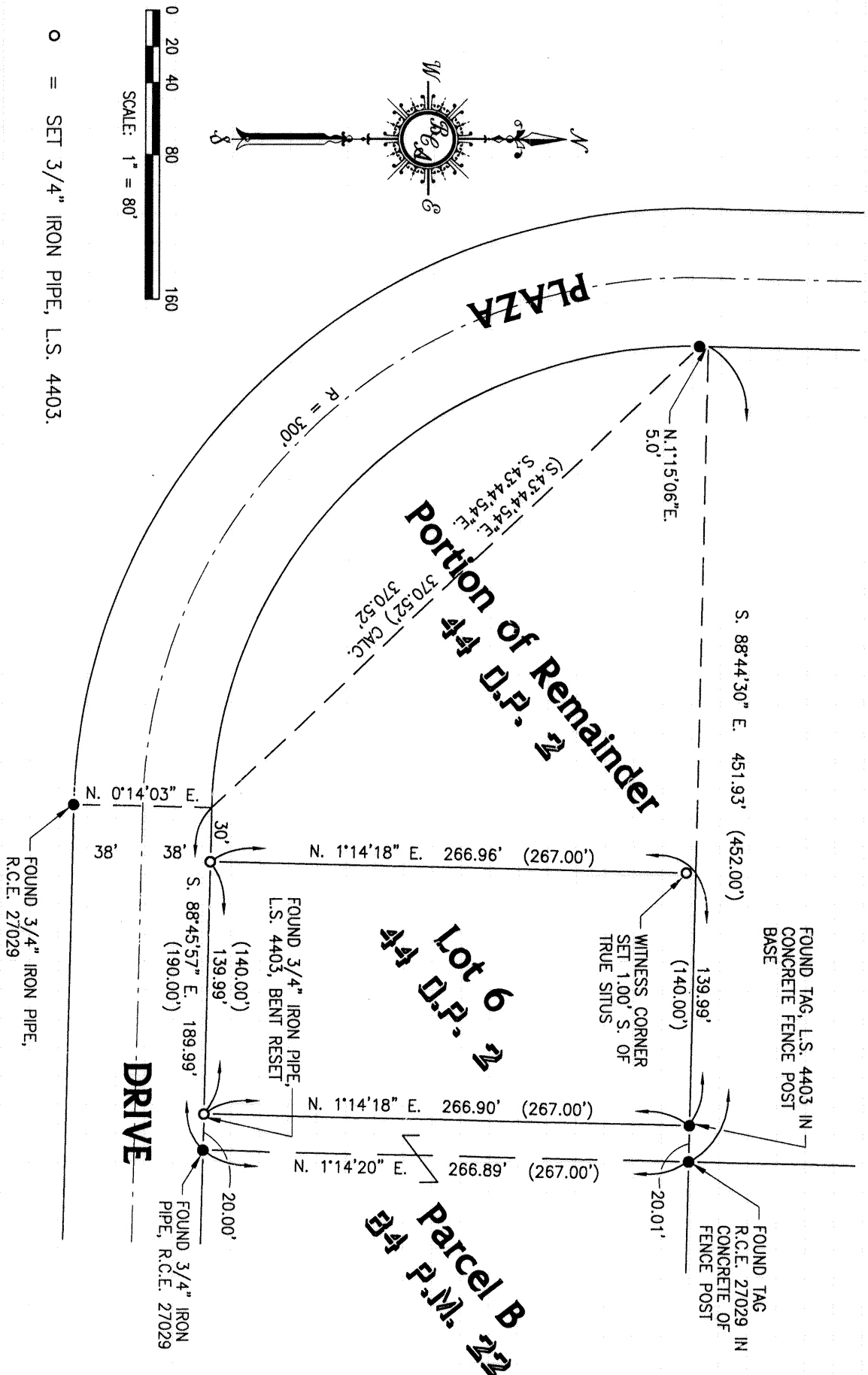
This Corner Record was received 2-10- 2001 and examined

and filed 7-12- 19-2001

Signed [Signature] Title DEPUTY CO. SUR.



County Surveyor's Comment \_\_\_\_\_



**REFERENCE:**

- (1) Parcel Map for Santa Nella Plaza, 76 P.M. 10, M.C.R.
- (2) Map of Santa Nella Plaza, 44 O.P. 2, M.C.R.
- (3) Parcel Map for Santa Nella Plaza, 84 P.M. 22, M.C.R.

o = SET 3/4" IRON PIPE, L.S. 4403.

Portion of Remainder  
44 D.P. 2

Lot 6  
44 D.P. 2

Parcel B  
84 P.M. 22

DRIVE

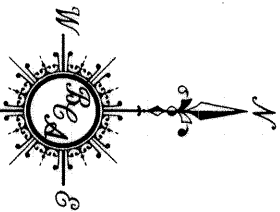
PLAZA

(S. 43° 44' 34" E.  
S. 43° 44' 34" E.  
370.52') CALC.  
370.52'

S. 88° 44' 30" E. 451.93' (452.00')

N. 1° 15' 06" E.  
5.0'

R = 300'



FOUND 3/4" IRON PIPE,  
R.C.E. 27029

FOUND TAG, L.S. 4403 IN  
CONCRETE FENCE POST  
BASE

WITNESS CORNER  
SET 1.00' S. OF  
TRUE SITUS

FOUND TAG  
R.C.E. 27029 IN  
CONCRETE OF  
FENCE POST

FOUND 3/4" IRON PIPE,  
L.S. 4403, BENT RESET

FOUND 3/4" IRON  
PIPE, R.C.E. 27029

N. 0° 14' 03" E.  
38'  
30'  
S. 88° 45' 57" E. 189.99'  
(140.00')  
139.99'  
(190.00')

N. 1° 14' 18" E. 266.96' (267.00')

N. 1° 14' 18" E. 266.90' (267.00')

N. 1° 14' 20" E. 266.89' (267.00')

139.99'  
(140.00')

20.01'

20.00'