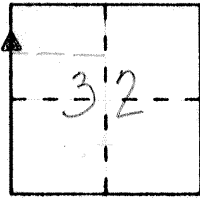


CORNER RECORD

Document Number 3242 S

City of _____ County of MERCED, California

Brief Legal Description SECTION 32, T. 8. S., R. 9. E., M.D.B. & M.



CORNER TYPE

COORDINATES (Optional)

Government Corner Control
Meander Property
Rancho Other
Date of Survey 7/13/00

N. _____
E. _____
Zone _____ Datum _____
Elev. _____

Corner - Left as found Found and tagged Established Reestablished Rebuilt

Identification and type of corner found: Evidence used to identify or procedure used to establish or reestablish the corner: FOUND 1" IRON PIPE DOWN 0³⁶⁰ IN MONUMENT WELL BOX PER 76 PM 10, TAG NOT VISABLE, AT THE INTERSECTION OF PLAZA DRIVE AND STATE ROUTE 33.

A description of the physical condition of the monument as found and as set or reset: MONUMENT IS IN 1" DRILLED HOLE AND IS DIFFICULT TO SEE.

SURVEYOR'S STATEMENT

This Corner Record was prepared by me or under my direction in conformance with the Land Surveyors' Act on 7/17/2000

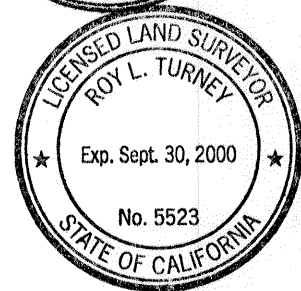
Signed Ginger J. Rubino L.S. or R.C.E. Number 6396 Expires 12/31/2002



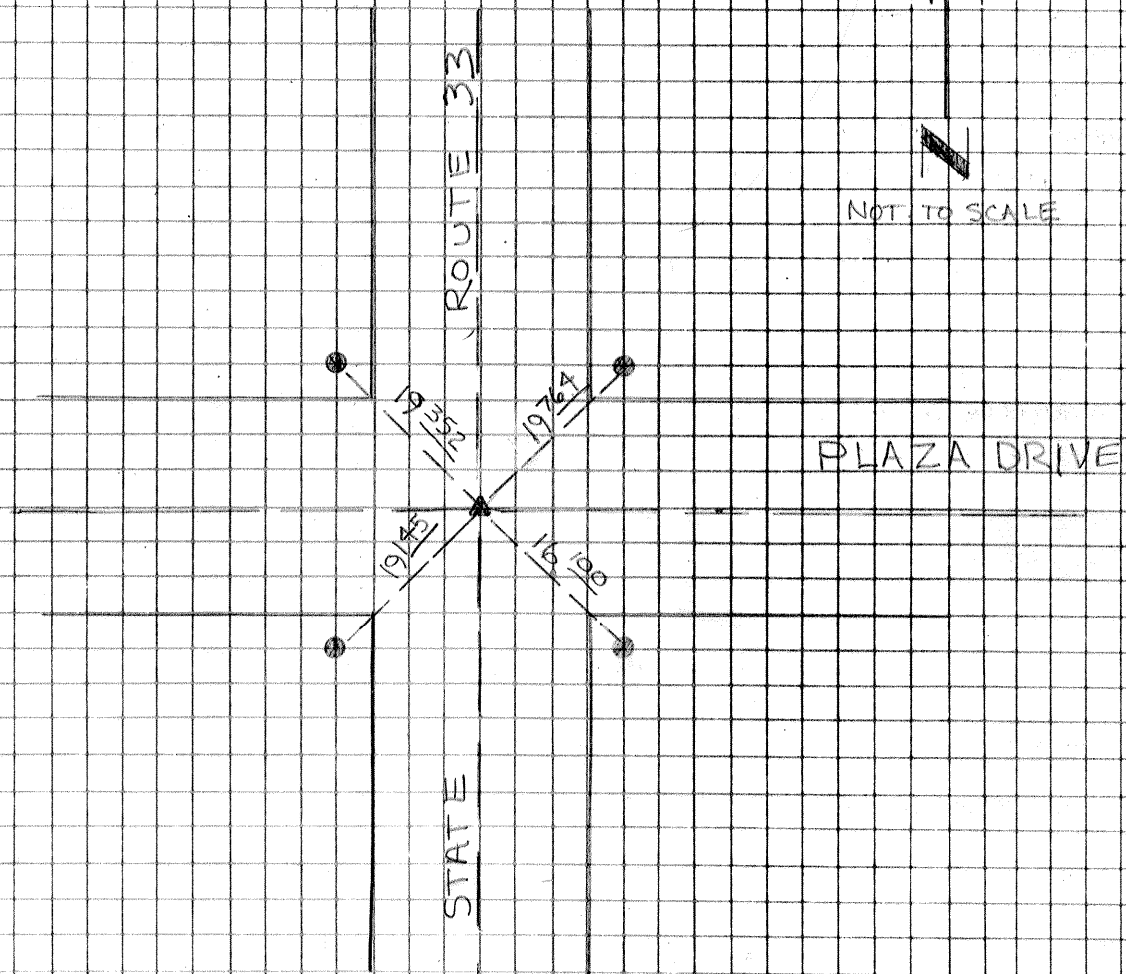
COUNTY SURVEYOR'S STATEMENT

This Corner Record was received JULY 28 ²⁰⁰⁰ and examined and filed AUGUST 15 ²⁰⁰⁰

Signed Roy L. Turney Title DEP. CO. SUR.



County Surveyor's Comment _____



LEGEND

- ▲ FOUND 1" O.D.I.P. DOWN
0360
- SET PK IN TOP BACK OF CURB

NOTE: ALL DIMENSIONS ARE IN METERS