

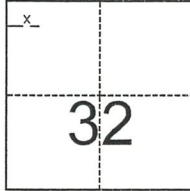
CORNER RECORD

Agency Index 3242-S
Document Number _____

City of Santa Nella County of Merced, California
Brief Legal Description Unknown Monument 70 feet +/- East of Intersection of SR-33 and Plaza Drive

CORNER TYPE

COORDINATES (Optional)



T.9 S., R.9 E.

- Government Corner
- Meander
- Rancho
- Control
- Property
- Other

Date of Survey October 2, 2018

N. _____ E. _____
 Elevation _____
 Units Metric U.S. Survey Foot
 Horizontal Datum _____
 Zone _____ Epoch Date _____
 Vertical Datum _____
 Complies with Public Resources Code §§8801-8819
 Complies with Public Resources Code §§8890-8902

- PLS Act Ref.: 8765(d) 8771 8773 Other:
- Corner/Monument: Left as found Established Rebuilt Pre-Construction
 Found and tagged Reestablished Referenced Post-Construction

Narrative of corner identified and monument as found, set, reset, replaced, or removed:
 See sheet #2 for description(s):

Found 2" Square and Hex with 3/4" Plug and Tack down 2.5' in 1' Diameter Well Monument 70' + or - East of the Centerline Intersection of Santa Nella Blvd. (SR-33) and Plaza Drive. No Reference.

SURVEYOR'S STATEMENT

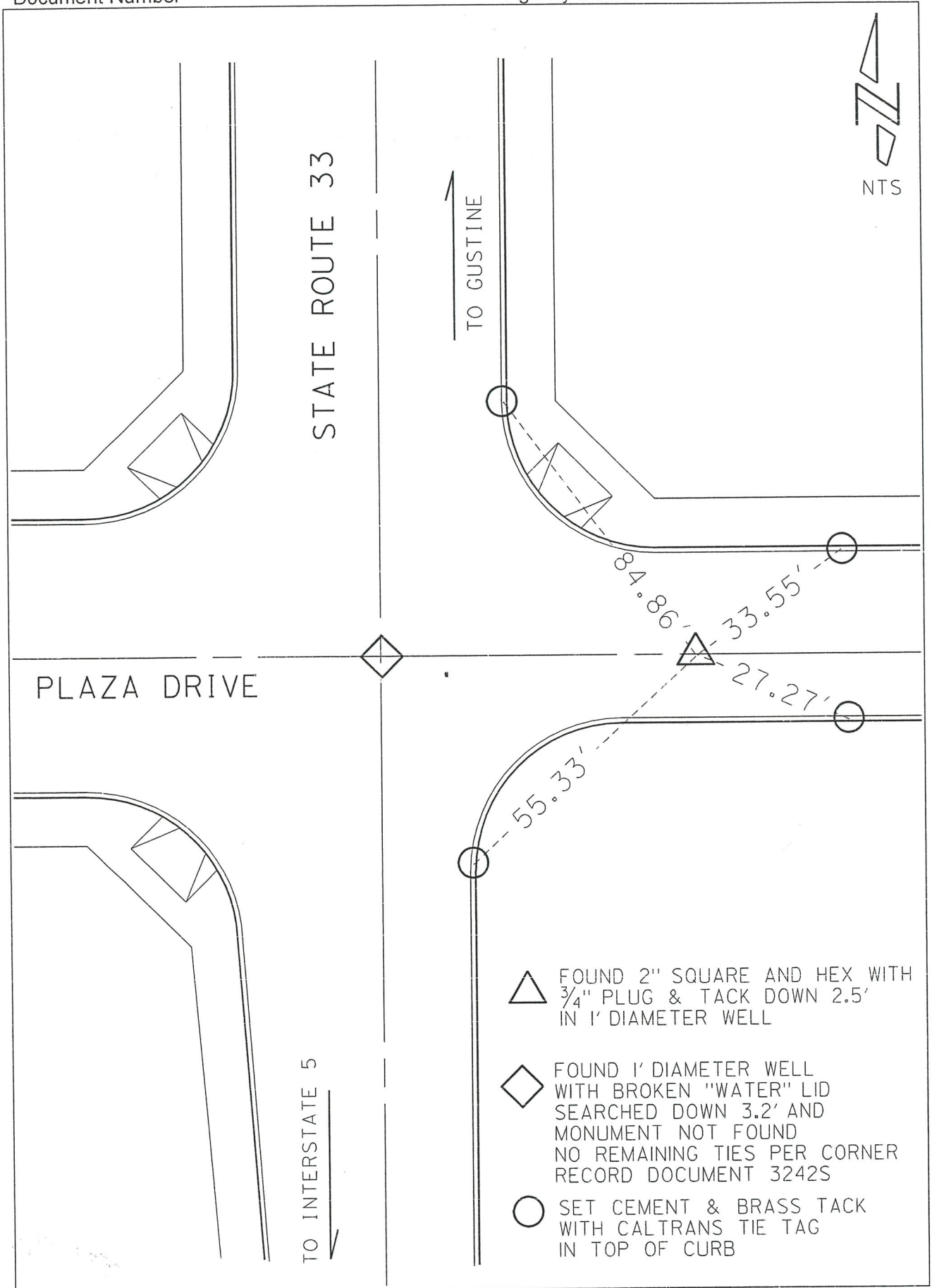
This Corner Record was prepared by me or under my direction in conformance with
 the Professional Land Surveyors' Act on October 15, 2018
 Signed P.L.S. or R.C.E. No. L 9391



COUNTY SURVEYOR'S STATEMENT

This Corner Record was received NOVEMBER 30, 2018
 and examined and filed DECEMBER 28, 2018
 Signed P.L.S. or R.C.E. No. 8664
 Title COUNTY SURVEYOR
 County Surveyor's Comment _____





△ FOUND 2" SQUARE AND HEX WITH 3/4" PLUG & TACK DOWN 2.5' IN 1' DIAMETER WELL

◇ FOUND 1' DIAMETER WELL WITH BROKEN "WATER" LID SEARCHED DOWN 3.2' AND MONUMENT NOT FOUND NO REMAINING TIES PER CORNER RECORD DOCUMENT 3242S

○ SET CEMENT & BRASS TACK WITH CALTRANS TIE TAG IN TOP OF CURB