

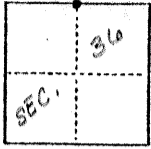
NO 3185

CORNER RECORD

COUNTY OF MERCED T. B S R. B E MDB&M MERIDIAN CALIFORNIA

CORNER TYPE: GOV'T. CORNER MEANDER RANCHO CONTROL OTHER

CORNER IDENTIFICATION — DATE OF VISIT 12/11 1974



The Northwest corner of lot 4 of the Realty Development Co's Subdivision of section 36, T. 8S., R. 8E.

CORNER — LEFT AS FOUND FOUND AND TAGGED REESTABLISHED OBLITERATED CORNER REBUILT

PHYSICAL DESCRIPTION OF CORNER FOUND; EVIDENCE AND METHOD USED TO IDENTIFY OR REESTABLISH

No existing corner was found and the location was established by proration between the Northeast and Northwest corners of said section 36 as shown on said subdivision

PHYSICAL DESCRIPTION OF MONUMENTS REBUILT OR PERPETUATED

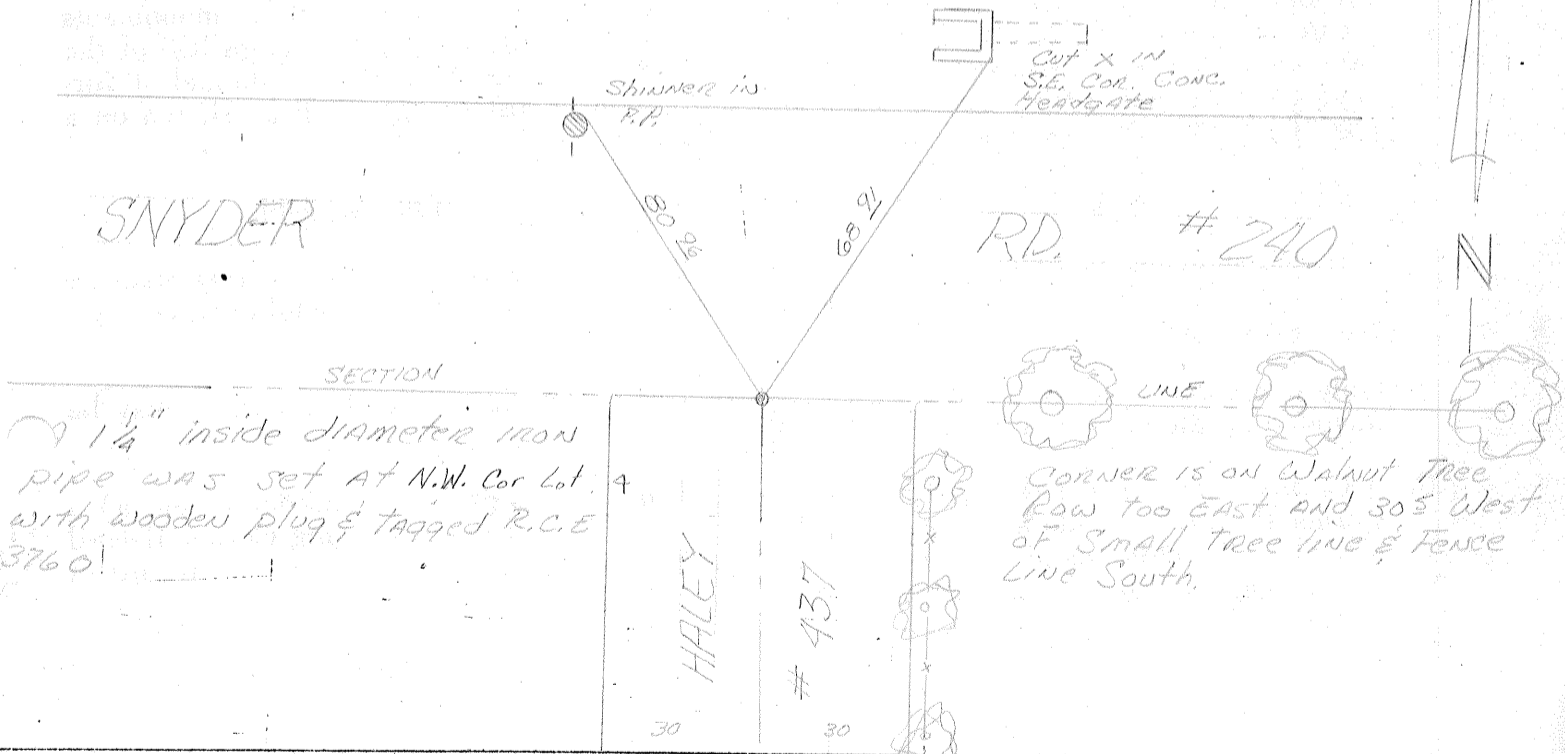
1 1/4" Inside diameter by 30" Long Iron pipe, with wooden plug tagged R.C.E. 13760

CALIFORNIA COORDINATE SYSTEM ORDER: FIRST SECOND THIRD
METHODS USED: NGS (USC & GS) STATE COUNTY OTHER STATION _____ STATION _____
ZONE _____ ELEVATION _____ NORTHINGS (Y) _____ EASTINGS (X) _____

(Fold)

SKETCH: (Include reference tie or witness points, remarks and topo of area)

See Merced Co. Rd. Dept Bk 709



SURVEYOR'S CERTIFICATE

THIS CORNER RECORD WAS PREPARED BY ME OR UNDER MY DIRECTION IN CONFORMANCE WITH THE LAND SURVEYORS ACT ON _____ 19____

SIGNED: _____

L.S. or R.C.E. No.: _____

SEAL

COUNTY SURVEYOR'S CERTIFICATE

THE CORNER RECORD WAS RECEIVED _____ 19____

AND EXAMINED AND FILED _____ 19____

BY: _____

TITLE: _____

DOCUMENT No. 3185

STATEMENT ON BACK OF SHEET

YES NO