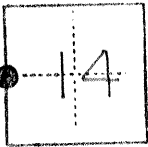


NO. 3156

CO RNER RECORD

COUNTY OF Merced T. 9S R. 14E Mt. Diablo MERIDIAN CALIFORNIA  
CORNER TYPE: GOV'T. CORNER  MEANDER  RANCHO  CONTROL  OTHER   
CORNER IDENTIFICATION — DATE OF VISIT April 19 76



Northwest corner of Lot 24, Block 14, (Section 14) as shown on the Map of the Bliss Ranch Subdivision on file in Volume 7 at Page 41, M.C.R.

CORNER — LEFT AS FOUND  FOUND AND TAGGED  REESTABLISHED OBLITERATED CORNER  REBUILT

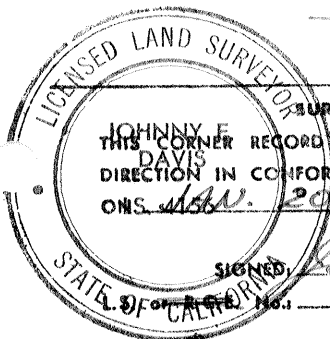
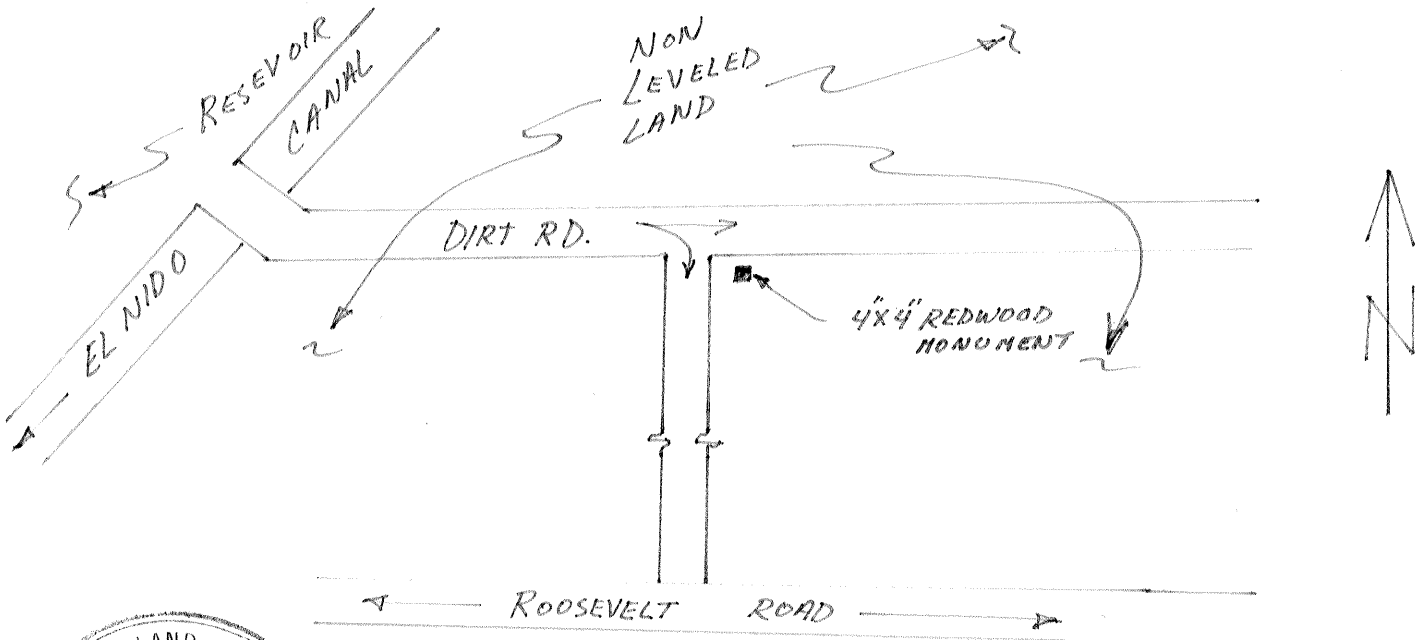
PHYSICAL DESCRIPTION OF CORNER FOUND; EVIDENCE AND METHOD USED TO IDENTIFY OR REESTABLISH

4 x 4 post with 60<sup>d</sup> nail in center 0.1 below ground, tagged L.S. 4156

PHYSICAL DESCRIPTION OF MONUMENTS REBUILT OR PERPETUATED

CALIFORNIA COORDINATE SYSTEM ORDER: FIRST  SECOND  THIRD   
STATIONS USED: NGS (USC & GS)  STATE  COUNTY  OTHER  STATION \_\_\_\_\_ STATION \_\_\_\_\_  
ZONE \_\_\_\_\_ ELEVATION \_\_\_\_\_ NORTHINGS (Y) \_\_\_\_\_ EASTINGS (X) \_\_\_\_\_

SKETCH: (Include reference tie or witness points, remarks and topo of area)



SURVEYOR'S CERTIFICATE

THIS CORNER RECORD WAS PREPARED BY ME OR UNDER MY DIRECTION IN CONFORMANCE WITH THE LAND SURVEYORS ACT  
ONS. 4156. 20 19 80

SIGNED

*Johnny E. Davis*  
4156

SEAL

COUNTY SURVEYOR'S CERTIFICATE

THE CORNER RECORD WAS RECEIVED Feb. 25 19 80  
AND EXAMINED AND FILED 19

BY: *Walter Mitchell*

TITLE: \_\_\_\_\_

DOCUMENT No. 3156

STATEMENT ON BACK OF SHEET

YES  NO